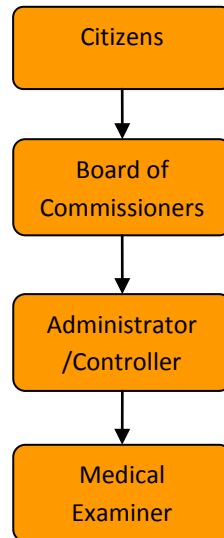


# Medical Examiner

---



## Mission Statement

---

It is the mission of this office to complete an efficient, professional and dignified investigation of any death reported to this office which falls under the guidelines set forth by the State of Michigan and having occurred within the County of Jackson in order to determine cause and manner of death.

# Medical Examiner

## Programs

It is the duty of this office to investigate in certain instances the cause and manner of death within this county due to acts of violence, negligence or omission of a criminal nature and/or threats to protect public health.

## Activities

It is the duty of this office to investigate in certain instances the cause and manner of death within the county due to acts of violence, negligence or omission of a criminal nature and/or threats to protect public health.

The office consists of two employees: the Medical Examiner and an Assistant.

The services of pathology assistants, forensic pathologists, forensic dentists, body removal services, field investigators, morgue facilities, etc., are either contracted or are on a fee for service basis.

All service providers work on an on-call basis and respond when needed, coordinating their efforts to be most effective.

## Strategic Plan Impact

### ✓ Safe Community

This is a State mandated office which has a direct impact on the safety of the community as we are responsible for investigating sudden & unexpected deaths. For example, the information gathered provides direct support for prosecution in criminal matters, or can be provided to families when the potential for a genetic problem is identified, therefore possibly saving lives in the future. Our office by and through our investigations prevents repeat injuries and works to identify any potential threat to the public health.

### ✓ Healthy Community

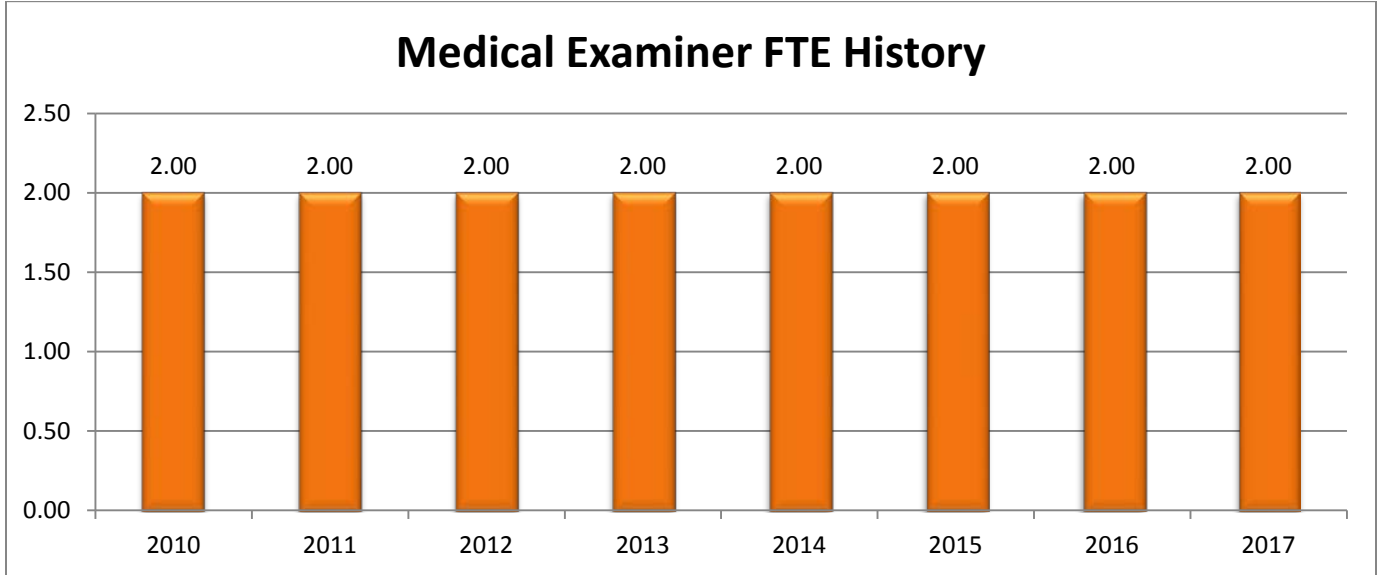
We help to provide critical and time sensitive information regarding the deaths in the community to protect the health and welfare of our citizens as well as establishing trends to be addressed to promote a healthier community.

## Accomplishments

- ✓ Implemented procedural changes in the office to more effectively /efficiently respond to consumer requests resulting in a more rapid response.

## Budget Adjustments

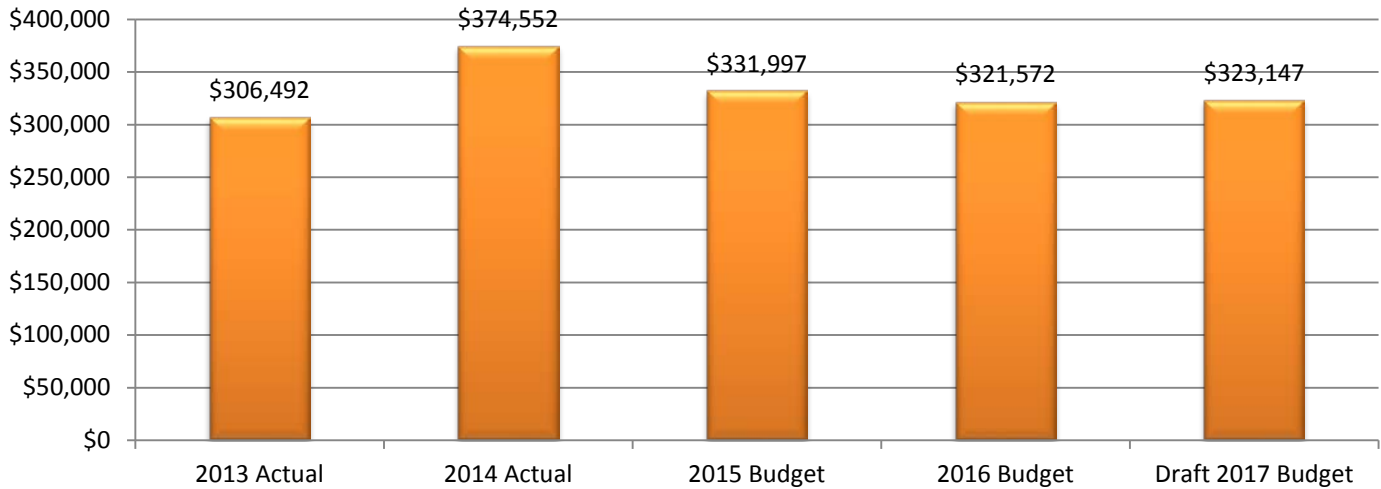
There are no significant budget adjustments to this program.



Expenditure History							
	2013 <u>ACTUAL</u>	2014 <u>ACTUAL</u>	2015 <u>BUDGET</u>	2016 DEPT <u>REQUESTED</u>	2016 <u>BUDGET</u>	2017 DEPT <u>REQUESTED</u>	DRAFT 2017 <u>BUDGET</u>
PERSONNEL SERVICES	\$90,346	\$100,214	\$107,570	\$97,145	\$97,145	\$98,720	\$98,720
SUPPLIES & MATERIALS	\$5,454	\$4,394	\$5,700	\$5,700	\$5,700	\$5,700	\$5,700
CONTRACT SERVICES	\$201,729	\$259,494	\$208,950	\$208,950	\$208,950	\$208,950	\$208,950
OTHER EXPENSES	\$8,963	\$10,450	\$9,777	\$9,777	\$9,777	\$9,777	\$9,777
<b>TOTAL PROGRAM COST</b>	<b>\$306,492</b>	<b>\$374,552</b>	<b>\$331,997</b>	<b>\$321,572</b>	<b>\$321,572</b>	<b>\$323,147</b>	<b>\$323,147</b>

# Medical Examiner

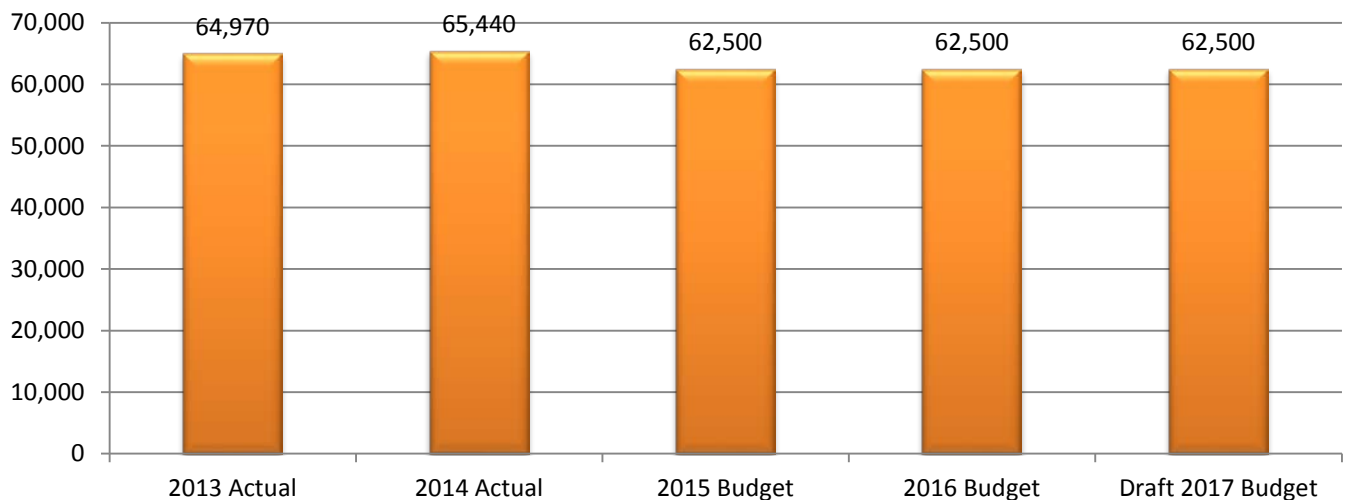
## MEDICAL EXAMINERS



### Revenue History

	2013 <u>ACTUAL</u>	2014 <u>ACTUAL</u>	2015 <u>BUDGET</u>	2016 DEPT <u>REQUESTED</u>	2016 <u>BUDGET</u>	2017 DEPT <u>REQUESTED</u>	DRAFT 2017 <u>BUDGET</u>
CHARGES/FEES	\$64,970	\$65,440	\$62,500	\$62,500	\$62,500	\$62,500	\$62,500
<b>TOTAL PROGRAM COST</b>	\$64,970	\$65,440	\$62,500	\$62,500	\$62,500	\$62,500	\$62,500

## MEDICAL EXAMINERS



### Strategic Outcomes

Indicator	2012 Actual	2013 Actual	2014 Actual	2015 Target	2016 Target	2017 Target
Percent of respondents who say they feel very or somewhat safe from violent crime	*	49%				

### Other Key Indicators

Indicator	2012 Actual	2013 Actual	2014 Actual	2015 Target	2016 Target	2017 Target
Cases Reviewed	329	330	N/A	N/A	N/A	N/A
Autopsies Performed	140	136	N/A	N/A	N/A	N/A
Cremation Fees Collected	\$43,350	\$43,350	\$37,000	\$42,000	\$37,000	\$42,000
Prison Reimbursement Dollars	\$15,893	\$19,100	\$17,000	\$17,000	\$17,000	\$17,000
Report Fees / SUID Reimbursement Dollars	\$3,095	\$ 2,520	\$3,500	\$3,500	\$3,500	\$3,500
ME	1	1	1	1	1	1
Forensic Pathologists	3	3	3	3	3	3
Diener (pathology assistants)	3	3	3	3	3	3
Field Investigators	8	8	9	9	9	9
Administrative Assistant	1	1	1	1	1	1
Average Cost Per Case for Forensic Pathologist	\$800	\$800	\$800	\$800	\$800	\$800
Average Cost Per Case for Diener	\$95	\$95	\$95	\$95	\$95	\$95
Average Cost Per Toxicology	\$180	\$180	\$180	TBD	\$180	TBD
Average Morgue Cost Per Autopsy	\$50	\$50	\$50	\$50	\$50	\$50
Average Cost For Field Investigator Per Day	\$100	\$100	\$100	\$100	\$100	\$100
Average Time Autopsy Completed After Body Delivery to Morgue	24 Hours	24 Hours	24 Hours	24 Hours	24 Hours	24 Hours
Average Time Until Completion of Final Autopsy Report	1-2 Months	1-2 Months	1-2 Months	1-2 Months	1-2 Months	1-2 Months



This page intentionally left blank.