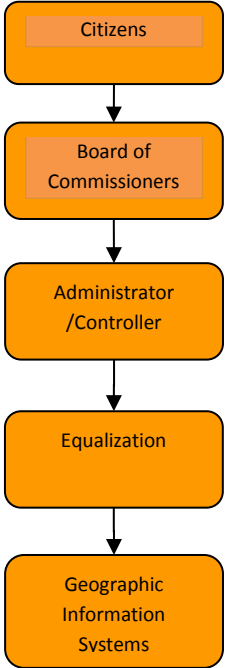


Equalization



Mission Statement

Create & maintain an environment for open communication, coordination & collaboration of the GIS efforts in Jackson County. Promote, educate, & integrate the prevalent usage of GIS to allow increased productivity through accurate & informed decision making. Provide the general public, private sector & associated governmental agencies access to enhanced GIS services & products that will assist them in meeting their business needs. To efficiently create & maintain an enterprise based GIS which accurately & comprehensively represents all relevant County geographic data & information through workflow-driven development of GIS data & applications.

Equalization

Activities

Ensure that all assessors within the county are properly reflecting the taxable properties and values in the respective assessing units. Survey assessments and assist county Board of Commissioners in equalizing assessments. Provide assistance to assessing units.

Strategic Plan Impact

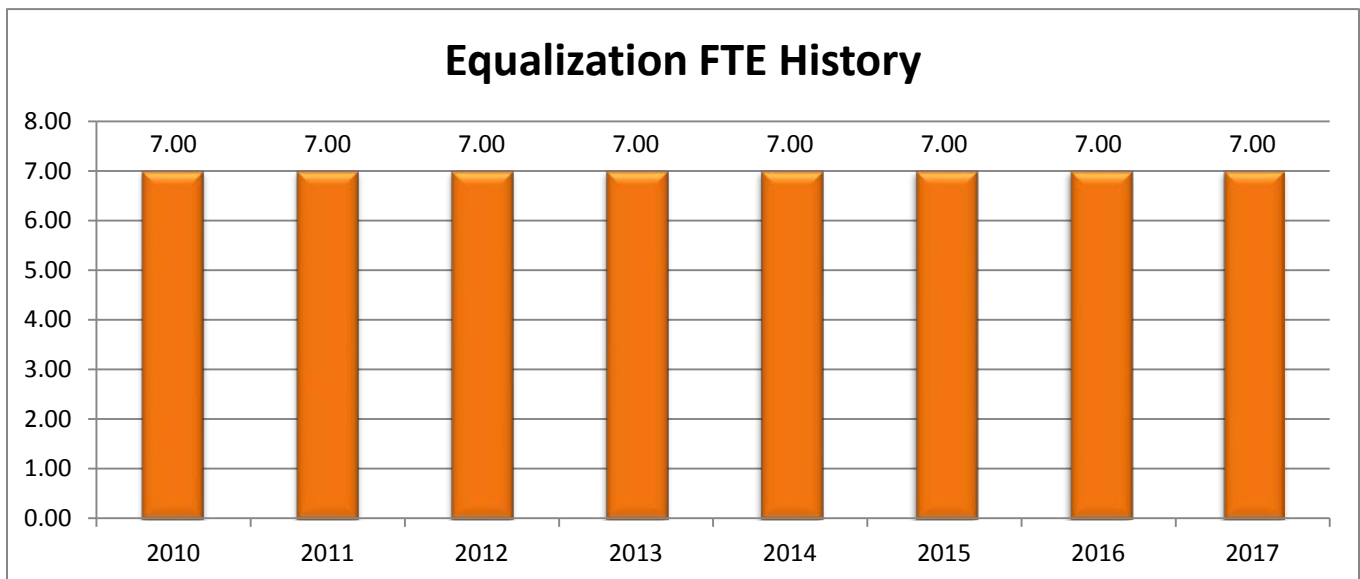
- ✓ **Safe Community**
Equalization Department's assessment roll database is the resource for developing the addressing for Central dispatch (911). The Equalization Department is the part of Damage Assessment team in the event of a disaster.
- ✓ **Economic Development**
The Equalization Department assists economic development efforts by maintaining the assessment rolls database. The Equalization Department regularly provides information about large vacant land areas that are accessible by truck and rail for industrial development.

Accomplishments

- ✓ Successfully negotiated a contract with Parma Township to perform contract assessing.

Budget Adjustments

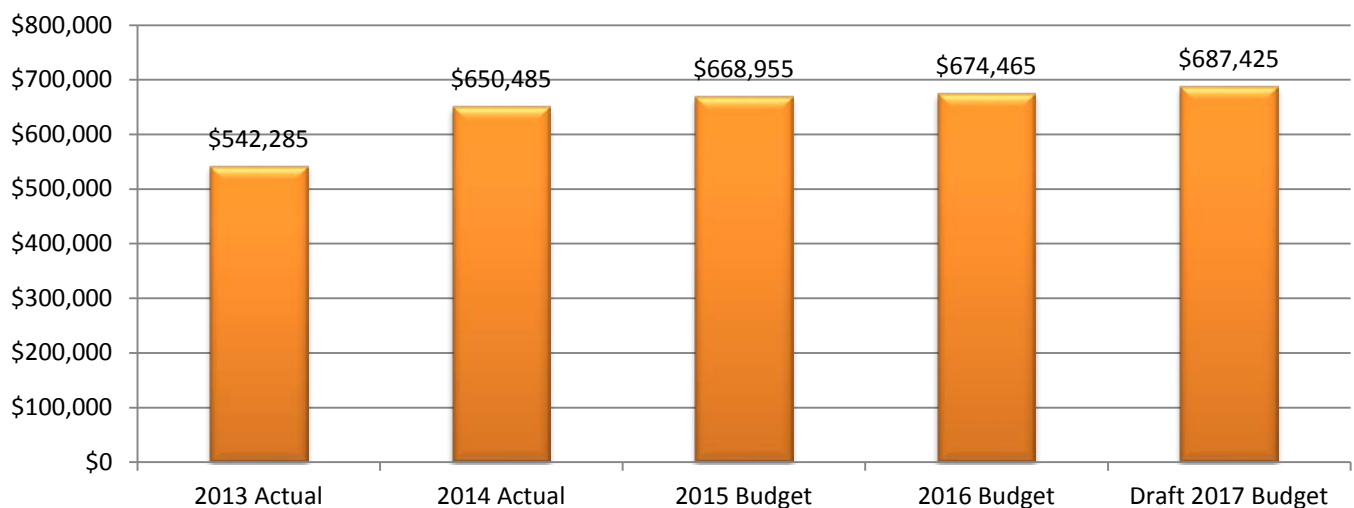
Minor adjustments have been made to software and postage costs. Modest increases in fee generated revenue are projected.



Expenditure History

	2013 <u>ACTUAL</u>	2014 <u>ACTUAL</u>	2015 <u>BUDGET</u>	2016 DEPT. <u>REQUESTED</u>	2016 <u>BUDGET</u>	2017 DEPT. <u>REQUESTED</u>	DRAFT 2017 <u>BUDGET</u>
PERSONNEL SERVICES	\$492,451	\$609,635	\$619,640	\$625,050	\$625,050	\$636,910	\$636,910
SUPPLIES & MATERIALS	\$15,846	\$14,093	\$14,065	\$14,165	\$14,165	\$15,265	\$15,265
CONTRACT SERVICES	\$21,201	\$14,665	\$19,700	\$16,700	\$16,700	\$16,700	\$16,700
OTHER EXPENSES	\$12,787	\$12,092	\$15,550	\$18,550	\$18,550	\$18,550	\$18,550
TOTAL PROGRAM COST	\$542,285	\$650,485	\$668,955	\$674,465	\$674,465	\$687,425	\$687,425

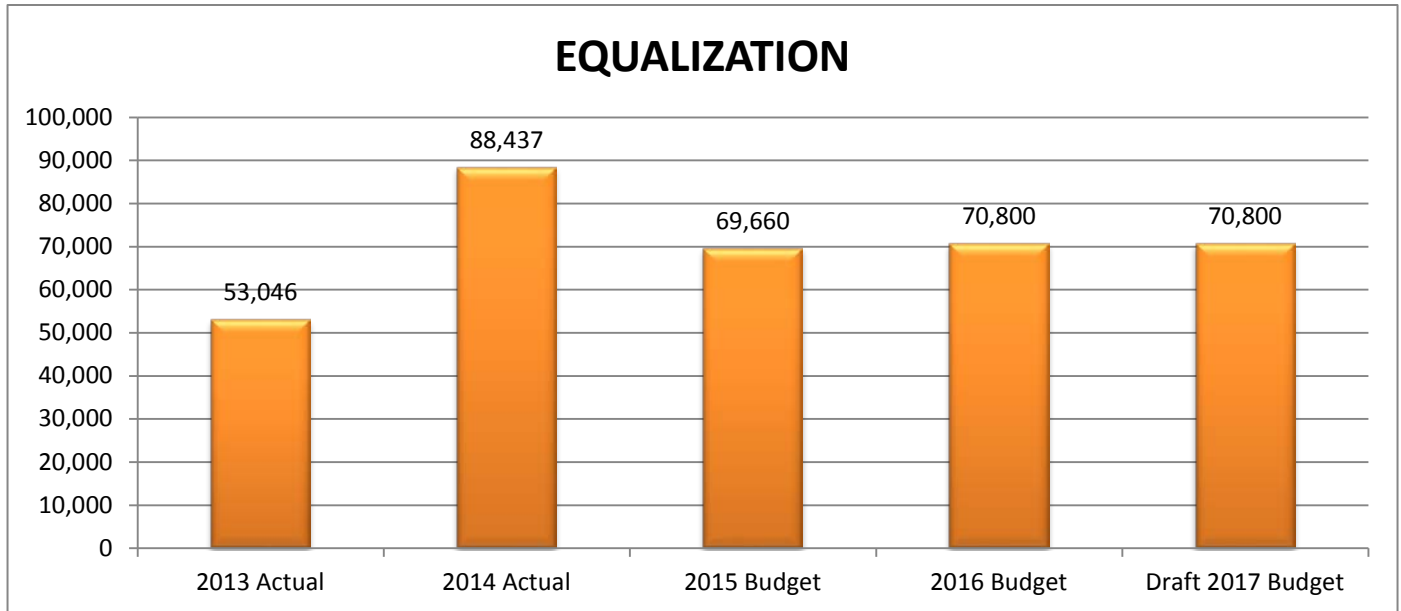
EQUALIZATION



Revenue History

	2013 <u>ACTUAL</u>	2014 <u>ACTUAL</u>	2015 <u>BUDGET</u>	2016 DEPT. <u>REQUESTED</u>	2016 <u>BUDGET</u>	2017 DEPT. <u>REQUESTED</u>	DRAFT 2017 <u>BUDGET</u>
Charges/Fees	\$53,046	\$88,437	\$69,660	\$70,800	\$70,800	\$70,800	\$70,800
Total Costs	\$53,046	\$88,437	\$69,660	\$70,800	\$70,800	\$70,800	\$70,800

Equalization



Strategic Outcomes							
<u>Indicator</u>	<u>2011 Actual</u>	<u>2012 Actual</u>	<u>2013 Actual</u>	<u>2014 Target</u>	<u>2015 Target</u>	<u>2016 Target</u>	<u>2017 Target</u>

Other Key Indicators

<u>Indicator</u>	<u>2011 Actual</u>	<u>2012 Actual</u>	<u>2013 Actual</u>	<u>2014 Actual</u>	<u>2015 Target</u>	<u>2016 Target</u>	<u>2017 Target</u>
Parcel maintenance - splits of land	No Submission	700	No Submission	No Submission	No Submission	No Submission	No Submission
Process of information from recorded instruments (deeds)	No Submission	13000	No Submission	No Submission	No Submission	No Submission	No Submission
Sales of properties	No Submission	800	No Submission	No Submission	No Submission	No Submission	No Submission
Equalization staff	No Submission	7	No Submission	No Submission	No Submission	No Submission	No Submission
Splits processed by description clerks	No Submission	700	No Submission	No Submission	No Submission	No Submission	No Submission
Processed information for appraisals and assessors	No Submission	1,200	No Submission	No Submission	No Submission	No Submission	No Submission
Shortage of real estate sales - Effects to property tax revenue	No Submission	N/A	No Submission	No Submission	No Submission	No Submission	No Submission
Parcel maintenance - number of land divisions	583	626	704	704	704	704	704
Process of deeds to update assessment database	8,047	9,250	9,741	9,741	9,741	9,741	9,741
Appraisals & real estate sales used to estimate market value							