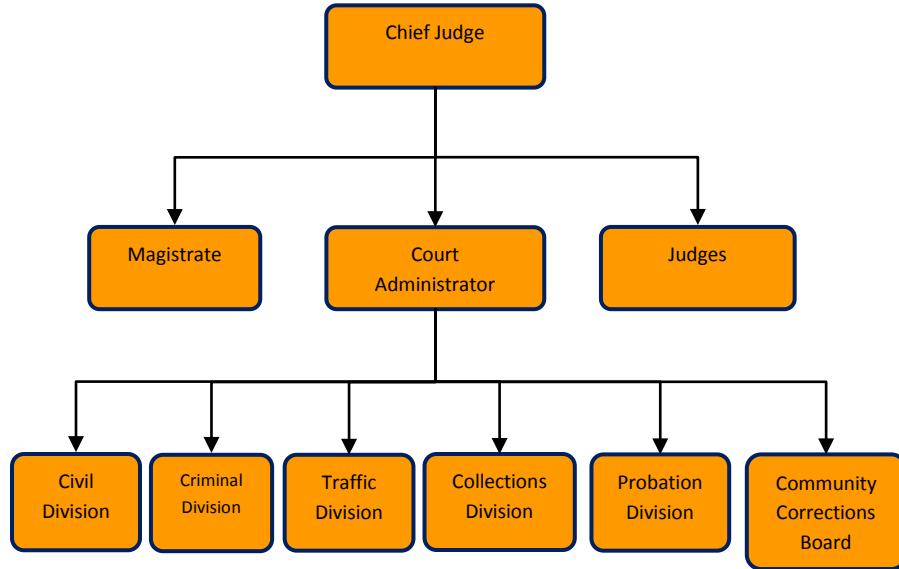


# 12<sup>th</sup> District Court

---



## Mission Statement

---

The 12th Judicial District Court is dedicated to dispensing equal justice in all matters under the court's jurisdiction, providing the highest quality of professional services in a prompt and efficient manner, and recognizing and respecting the individual dignity of all people served by the court.

## Programs

---

[Court Program](#)

[Community Corrections](#)

[Intensive Probation](#)

# 12<sup>th</sup> District Court Program

---

## Activities

There are six divisions of 12<sup>th</sup> District Court: Civil, Criminal, Collections, Community Corrections, Probation and Traffic. The District Court processes civil lawsuits, performs weddings, and processes all statute and ordinance misdemeanors. The District Court is also responsible for processing felony matters up to the preliminary examination stage. We collect current and delinquent fines and costs owed to the court, and execute criminal bench warrants. Additionally, we conduct presentence investigations; supervise individuals on probation, and process traffic, marine, snow-mobile, conservation, animal control, and some parking violations. Lastly, we operate two specialty courts – Mental Health and Domestic Violence.

## Strategic Plan Impact

### ✓ Safe Community

The 12th District Court plays an important role in providing Jackson County residents with a safe community. Through the adjudication process we help to create an environment where residents peacefully coexist and participate in all aspects of life. The District Court has two specialized courts for increased focus and attention on areas of concern, Domestic Violence/Aggression Court and Mental Health. Both courts are fully functional and are proving beneficial for community safety. Our probation department has an Intensive Supervision Program that serves as a jail alternative program providing daily monitoring of drug and alcohol abuse for individuals on probation. Our Community Corrections program provides jail alternatives to free up jail bed space for more serious offenders. Video arraignment technology provides added security benefits when arraigning individuals currently housed at the County Jail and /or Department of Corrections.

## Accomplishments

- ✓ Specialty Courts are still a high priority for District Court. The Aggression Court (Domestic Violence) completed its tenth year. This specialty court is dedicated to reducing the number of domestic violence incidents in Jackson County through a coordinated effort, which focuses on safety and accountability. This year the court successfully graduated 91 defendants making 844 successful graduates since inception. In addition to domestic violence offenses, the Aggression Court handles all other assault, stalking, child abuse, malicious destruction of property and resisting and opposing cases. Two hundred twenty-four (274) aggression cases were referred to the probation department for a presentence investigation. This represents 16% reduction from last year.

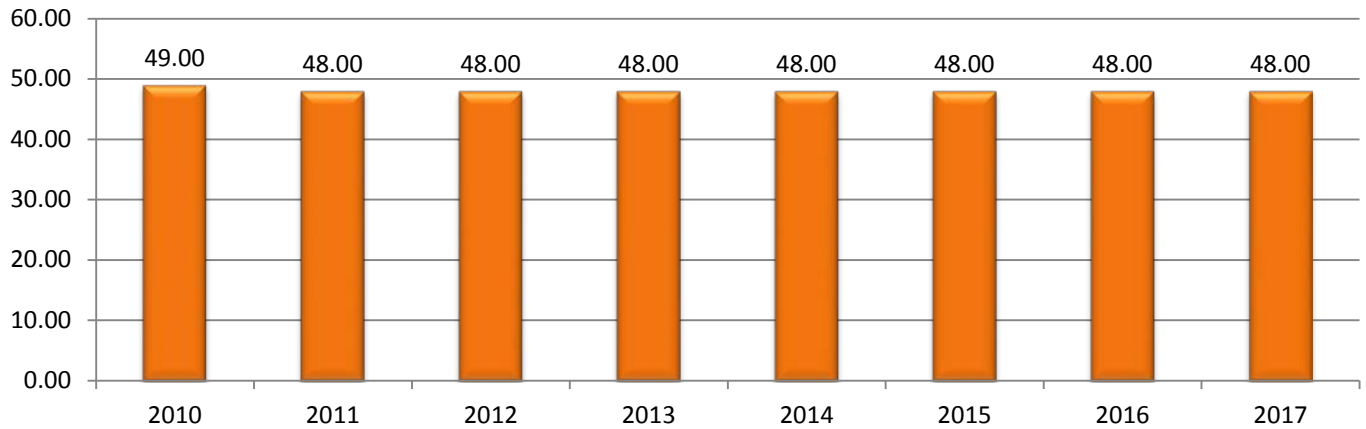
- ✓ The Jackson County Mental Health Court (MHC) held its first court session in July 2008. This specialty court is devoted to improving public safety, reducing recidivism, and enhancing the quality of life among mentally ill defendants. This is a grant program administered by the State Court Administrative Office (SCAO) to provide courts and community mental health services programs funding to plan and implement this specialty court. Our Mental Health Court was awarded \$340,060 in grant funding to fund court activities and treatment. In 2014 the court received 80 applications and accepted 23 into the program. Overall, the court successfully graduated 10 defendants while unsuccessfully discharging 19.
- ✓ In 2009, District Court took over the supervision of the Community Corrections program (State Grant Funded) providing jail alternatives for individuals convicted of both misdemeanors and felonies. This program has been a nice addition to the District Court and is 100% grant funded. The court was awarded \$212,557 from the Department of Corrections to implement diversion programs in Jackson County. The objectives of Community Corrections are to lower State prison commitment rates by diverting non-violent offenders from the State prison system and improve utilization of our county jails. Offenders are motivated to participate in P.A. 511 programs because they can avoid jail time or earn early release time through their successful completion. This enables the Sheriff's Department to make better use of jail bed space. 2014 programs consisted of; Community Service, Day Report, ISP, Moral Reconciliation Therapy (MRT), Staying Quit, Job Readiness and Anger Management.
- ✓ Our collection department has been working diligently to collect outstanding receivables. In 2014 we collected a total of \$2,125,605, up \$195,568 from 2013.
- ✓ Our probation department, with the specialized courts, conducted 1,192 pre-sentence investigations.
- ✓ 2014 brought another successful Courts To School Program as Judge Filip traveled to Jackson High School to hold court.
- ✓ November of 2014 a Public Satisfaction Survey was completed over a 5 day span, surveying all customers of the 12<sup>th</sup> District Court with a survey designed by the State Court Administrative Office (SCAO). Results of the survey indicated that 94% of those surveyed agreed they were treated with courtesy and respect and 84% agreed that they believed the outcome of their case was "fair".

# District Court

## Budget Adjustments

Minor fee and fine changes were made by the District Court to account for change in revenues from 2014 to 2015. Major caseload decreases resulting in revenue reductions.

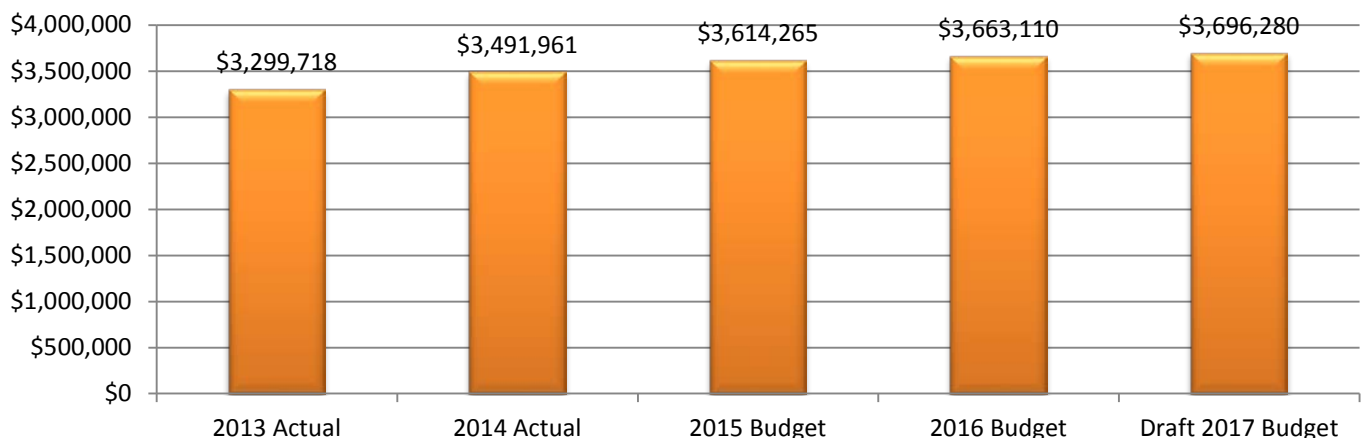
### 12th District Court FTE History



### Expenditure History

|                           | 2013<br><u>ACTUAL</u> | 2014<br><u>ACTUAL</u> | 2015<br><u>BUDGET</u> | 2016 DEPT.<br><u>REQUESTED</u> | 2016<br><u>BUDGET</u> | 2017 DEPT.<br><u>REQUESTED</u> | DRAFT 2017<br><u>BUDGET</u> |
|---------------------------|-----------------------|-----------------------|-----------------------|--------------------------------|-----------------------|--------------------------------|-----------------------------|
| PERSONNEL SERVICES        | \$2,982,202           | \$3,179,052           | \$3,223,965           | \$3,292,110                    | \$3,292,110           | \$3,352,480                    | \$3,352,480                 |
| SUPPLIES & MATERIALS      | \$96,479              | \$84,855              | \$96,500              | \$88,700                       | \$88,700              | \$74,000                       | \$74,000                    |
| CONTRACT SERVICES         | \$190,783             | \$197,050             | \$260,300             | \$248,800                      | \$248,800             | \$241,300                      | \$241,300                   |
| OTHER EXPENSES            | \$30,254              | \$31,004              | \$33,500              | \$33,500                       | \$33,500              | \$28,500                       | \$28,500                    |
| <b>TOTAL PROGRAM COST</b> | <b>\$3,299,718</b>    | <b>\$3,491,961</b>    | <b>\$3,614,265</b>    | <b>\$3,663,110</b>             | <b>\$3,663,110</b>    | <b>\$3,696,280</b>             | <b>\$3,696,280</b>          |

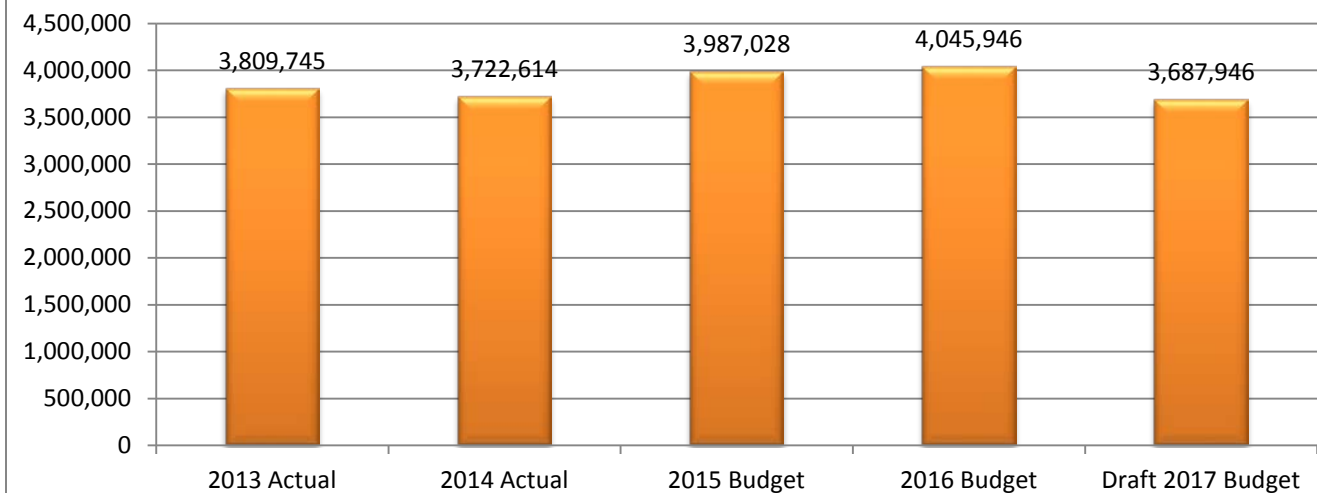
### 12TH DISTRICT COURT



Revenue History

|                              | 2013<br><u>ACTUAL</u> | 2014<br><u>ACTUAL</u> | 2015<br><u>BUDGET</u> | 2016 DEPT.<br><u>REQUESTED</u> | 2016<br><u>BUDGET</u> | 2017 DEPT.<br><u>REQUESTED</u> | DRAFT 2017<br><u>BUDGET</u> |
|------------------------------|-----------------------|-----------------------|-----------------------|--------------------------------|-----------------------|--------------------------------|-----------------------------|
| Charges/Fees                 | \$2,554,809           | \$2,358,249           | \$2,722,666           | \$2,785,000                    | \$2,785,000           | \$2,472,000                    | \$2,472,000                 |
| Fines                        | \$1,066,137           | \$1,023,142           | \$1,066,916           | \$1,063,500                    | \$1,063,500           | \$1,018,500                    | \$1,018,500                 |
| Intergovernmental            | \$182,896             | \$336,009             | \$182,446             | \$182,446                      | \$182,446             | \$182,446                      | \$182,446                   |
| Other revenue                | \$5,903               | \$5,214               | \$15,000              | \$15,000                       | \$15,000              | \$15,000                       | \$15,000                    |
| <b>TOTAL PROGRAM REVENUE</b> | <b>\$3,809,745</b>    | <b>\$3,722,614</b>    | <b>\$3,987,028</b>    | <b>\$4,045,946</b>             | <b>\$4,045,946</b>    | <b>\$3,687,946</b>             | <b>\$3,687,946</b>          |

12TH DISTRICT COURT



Strategic Outcomes

| <u>Indicator</u>                              | 2011<br><u>Actual</u> | 2012<br><u>Actual</u> | 2013<br><u>Actual</u> | 2014<br><u>Actual</u> | 2015<br><u>Target</u> | 2016<br><u>Target</u> | 2017<br><u>Target</u> |
|-----------------------------------------------|-----------------------|-----------------------|-----------------------|-----------------------|-----------------------|-----------------------|-----------------------|
| Presentence Investigations                    | 1,574                 | 1,492                 | 1,416                 | 1,192                 | 1,092                 | 1000                  | 1000                  |
| Fees collected by Internal Collection Program | \$1,796,814           | \$1,887,415           | \$1,930,037           | \$2,125,605           | \$2,495,546           | \$2,495,546           | \$2,495,546           |
| Total Number of Cases Processed               | 55,764*               | 55,168                | 53,307                | 43,926                | 34,366                | 33,366                | 33,366                |

\* Four judges are budgeted for the District Court.

# District Court

## Other Key Indicators

| Indicator                                   | 2011          | 2012          | 2013          | 2014          | 2015          | 2016          | 2017          |
|---------------------------------------------|---------------|---------------|---------------|---------------|---------------|---------------|---------------|
|                                             | <u>Actual</u> | <u>Actual</u> | <u>Actual</u> | <u>Actual</u> | <u>Target</u> | <u>Target</u> | <u>Target</u> |
| Number of Probation Agents processing PSI's | 6             | 6             | 6             | 6             | 6             | 6             | 6             |
| Number of Collection Officers               | 3             | 3             | 3             | 3             | 3             | 3             | 3             |
| Number of Judges Processing cases           | 4             | 4             | 4             | 4             | 4             | 4             | 4             |
| Number of PSI's per agent                   | 298           | 300           | 236           | 199           | 182           | 167           | 167           |
| Amount collected per collection agent       | 598,938       | 629,135       | 643,346       | 708,535       | 831,848       | 831,848       | 831,848       |
| Number of cases per Judge                   | 18,588*       | 13,792        | 13,327        | 10,981        | 8,591         | 8,342         | 8,342         |

\* Four judges are budgeted for the District Court; however, one judge position was vacated for most of 2011. The calculation reflects this circumstance.

# Community Corrections Board

---

## Activities

In 2009, District Court took over the supervision of the Community Corrections program (State Grant Funded) providing jail alternatives for individuals convicted of both misdemeanors and felonies. This program has been a nice addition to the District Court and is 100% grant funded. The court was awarded \$212,557 from the Department of Corrections to implement diversion programs in Jackson County. The objectives of Community Corrections are to lower State prison commitment rates by diverting non-violent offenders from the State prison system and improve utilization of our county jails. Offenders are motivated to participate in P.A. 511 programs because they can avoid jail time or earn early release time through their successful completion. This enables the Sheriff's Department to make better use of jail bed space. 2016 programs consisted of; Community Service, Day Report, ISP, Moral Reconciliation Therapy (MRT), Staying Quit, Job Readiness and Anger Management.

## Strategic Plan Impact

### ✓ Safe Community

The Community Correction Board assists the Board of Commissioners in many of their strategic priorities. First, the program assists the Court in providing valuable opportunities for offenders to perform services in the form of restitution for offenses. Secondly, the program supports many of the community activities with labor to accomplish projects that would otherwise not be completed due to financial restraints. These projects support the Board of Commissioners other strategic priorities. Our Community Corrections program provides jail alternatives to free up jail bed space for more serious offenders.

## Accomplishments

- ✓ The court was awarded \$212,557 from the Department of Corrections to implement diversion programs in Jackson County. 2014 programs consisted of; Community Service, Day Report, ISP, Moral Reconciliation Therapy (MRT), Staying Quit, Job Readiness and Anger Management. These programs are all jail alternative programs that assist the offenders with needed tools to help them succeed when released back into the community and hopefully assist in staying offense free following successful completion of one of these valuable programs.
- ✓ Community Corrections programs provide a variety of volunteer work throughout the county helping with the Jackson County Fair, Animal Shelter and Jackson County Facilities Department, just to mention a few.

**Budget Adjustments**

No significant budget adjustments to this program.

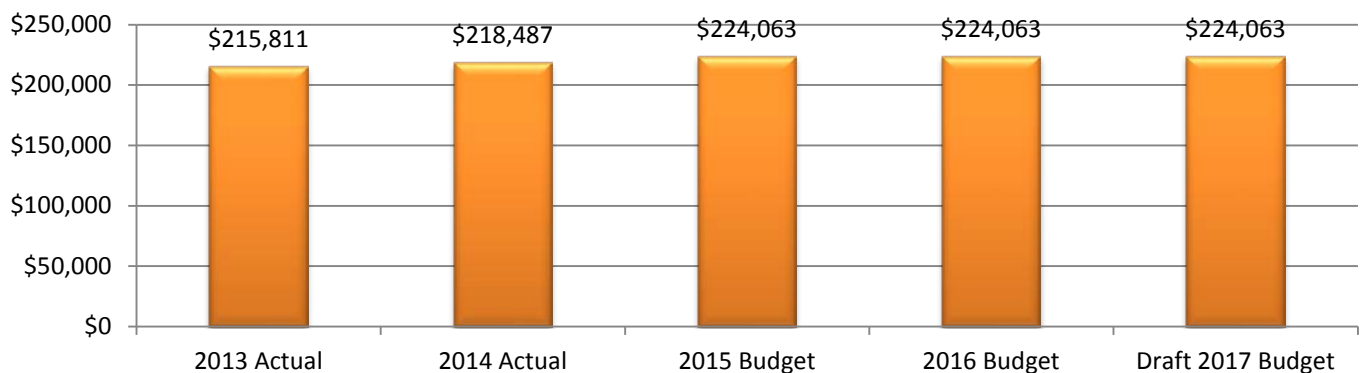
**Community Corrections Board FTE History**



**Expenditure History**

|                           | 2013 ACTUAL      | 2014 ACTUAL      | 2015 BUDGET      | 2016 DEPT. REQUESTED | 2016 BUDGET      | 2017 DEPT. REQUESTED | DRAFT 2017 BUDGET |
|---------------------------|------------------|------------------|------------------|----------------------|------------------|----------------------|-------------------|
| PERSONNEL SERVICES        | -                | -                | -                | -                    | -                | -                    | -                 |
| SUPPLIES & MATERIALS      | \$127            | \$0              | \$500            | \$500                | \$500            | \$500                | \$500             |
| CONTRACT SERVICES         | -                | -                | -                | -                    | -                | -                    | -                 |
| OTHER EXPENSES            | \$215,684        | \$218,487        | \$223,563        | \$223,563            | \$223,563        | \$223,563            | \$223,563         |
| <b>TOTAL PROGRAM COST</b> | <b>\$215,811</b> | <b>\$218,487</b> | <b>\$224,063</b> | <b>\$224,063</b>     | <b>\$224,063</b> | <b>\$224,063</b>     | <b>\$224,063</b>  |

**COMMUNITY CORRECTIONS BOARD**

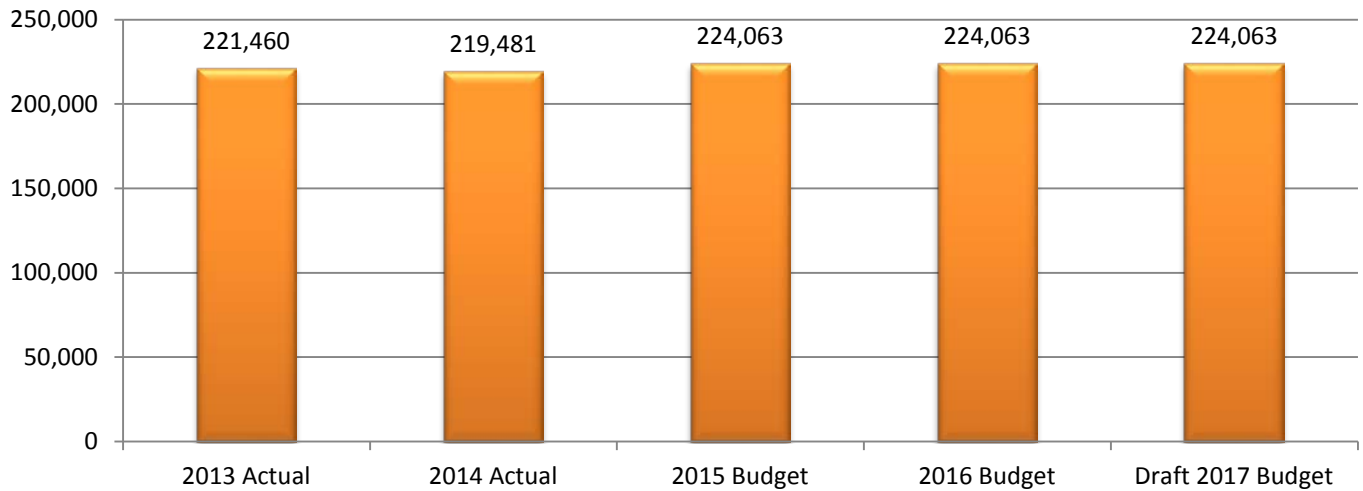




Revenue History

|                              | 2013<br>ACTUAL   | 2014<br>ACTUAL   | 2015<br>BUDGET   | 2016 DEPT.<br>REQUESTED | 2016<br>BUDGET   | 2017 DEPT.<br>REQUESTED | DRAFT 2017<br>BUDGET |
|------------------------------|------------------|------------------|------------------|-------------------------|------------------|-------------------------|----------------------|
| INTERGOVERNMENTAL            | \$214,697        | \$212,445        | \$216,563        | \$216,563               | \$216,563        | \$216,563               | \$216,563            |
| OTHER                        | \$6,763          | \$7,036          | \$7,500          | \$7,500                 | \$7,500          | \$7,500                 | \$7,500              |
| <b>TOTAL PROGRAM REVENUE</b> | <b>\$221,460</b> | <b>\$219,481</b> | <b>\$224,063</b> | <b>\$224,063</b>        | <b>\$224,063</b> | <b>\$224,063</b>        | <b>\$224,063</b>     |

**COMMUNITY CORRECTIONS BOARD**



# District Court Intensive Probation

---

## Activities

The Intensive Supervision Program has been in operation since the late 1980's. The program plays an indirect role in creating a self-sustaining people where residents peacefully coexist.

## Strategic Plan Impact

### ✓ Safe Community

The program is a house arrest program designed for individuals with serious drug & alcohol problems. Participants must remain at home and a probation officer visits them daily for drug & alcohol testing. Without this program, these probationers would go to jail. The program concentrates on a rehabilitative approach to probation as opposed to a punitive one, while keeping the community safe and offering jail alternatives that in turn free up jail beds for more serious offenders.

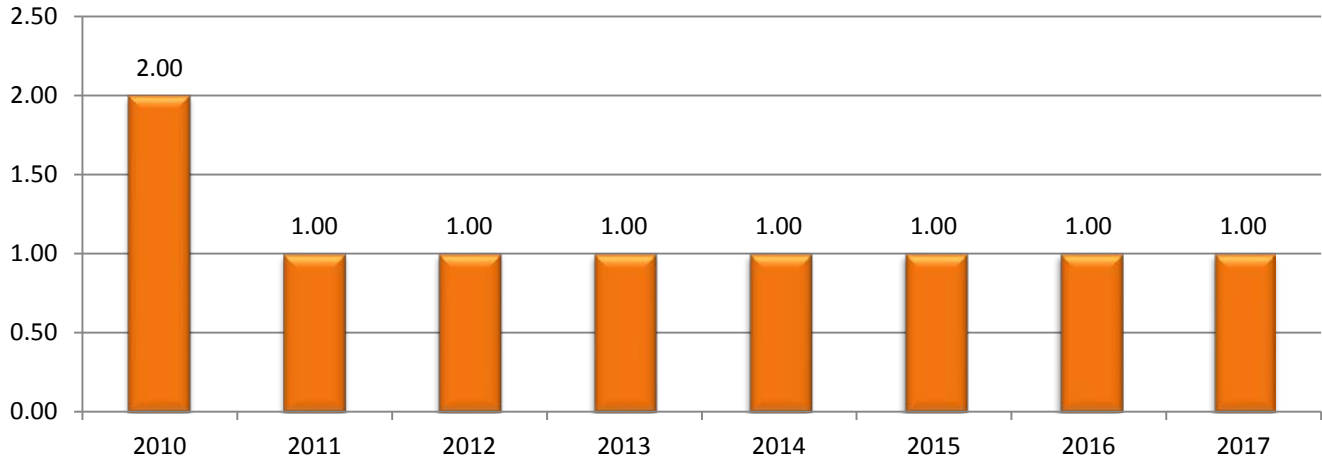
## Accomplishments

- ✓ The Intensive Supervision program has been successful in providing defendants with a program that focuses on intensive rehabilitation as opposed to punitive sanctions. This program has expanded to assist 4th Circuit Court, Mental Health Court, Domestic Violence/Aggression Court and the Community Corrections program. In 2014, ISP received 109 referrals.
- ✓ This program assisted the Jackson County Jail by diverting defendants that would have received lengthy jail term. It is estimated that by sentencing defendants to the Intensive Supervision Program, the court freed 11,135 jail beds and saved \$356,308 in jail bed dollars.

## Budget Adjustments

There were no significant budget adjustments to this program.

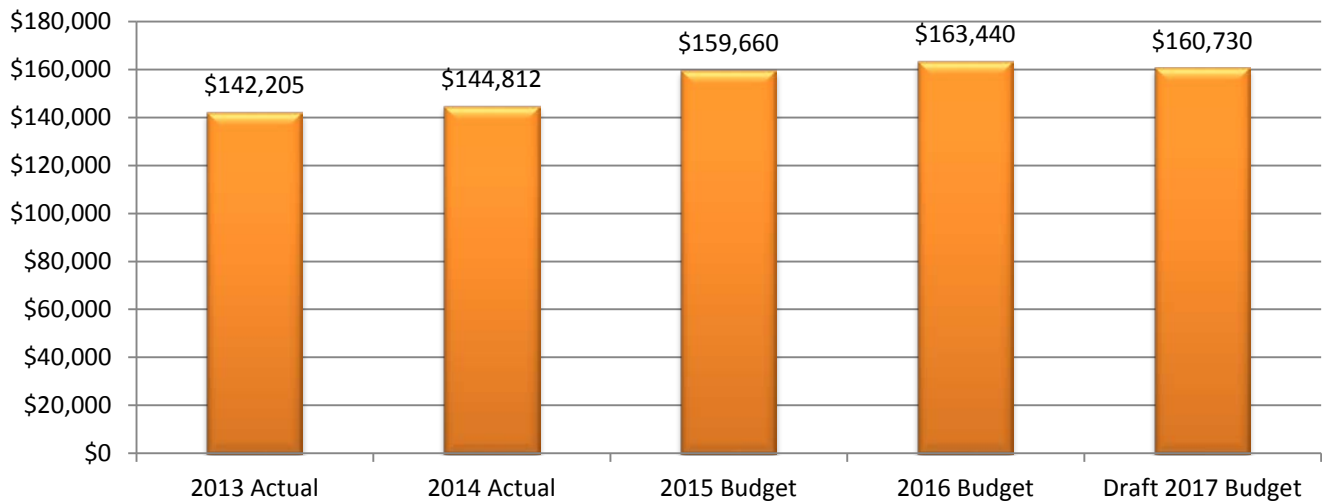
### District Court Intensive Probation FTE History



### Expenditure History

|                           | 2013<br>ACTUAL   | 2014<br>ACTUAL   | 2015<br>BUDGET   | 2016 DEPT.<br>REQUESTED | 2016<br>BUDGET   | 2017 DEPT.<br>REQUESTED | DRAFT<br>2017<br>BUDGET |
|---------------------------|------------------|------------------|------------------|-------------------------|------------------|-------------------------|-------------------------|
| PERSONNEL SERVICES        | \$123,178        | \$129,094        | \$135,160        | \$145,940               | \$145,940        | \$140,730               | \$140,730               |
| SUPPLIES & MATERIALS      | (\$40)           | -                | -                | -                       | -                | -                       | -                       |
| CONTRACT SERVICES         | \$1,114          | -                | -                | -                       | -                | -                       | -                       |
| OTHER EXPENSES            | \$17,953         | \$15,718         | \$24,500         | \$17,500                | \$17,500         | \$20,000                | \$20,000                |
| <b>TOTAL PROGRAM COST</b> | <b>\$142,205</b> | <b>\$144,812</b> | <b>\$159,660</b> | <b>\$163,440</b>        | <b>\$163,440</b> | <b>\$160,730</b>        | <b>\$160,730</b>        |

### DIST COURT INTENSIVE PROBATION

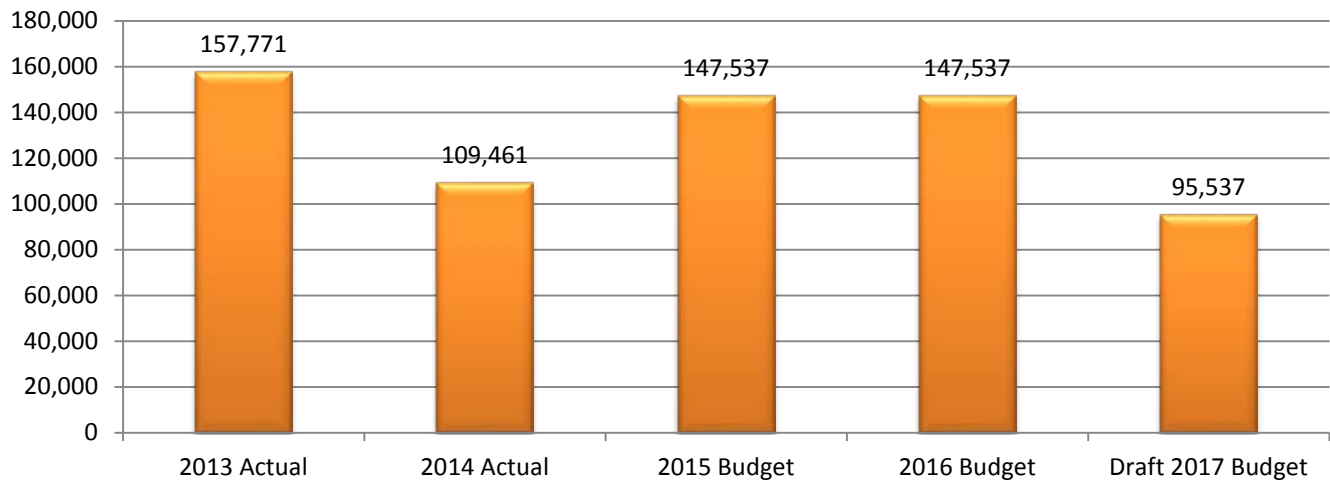


## District Court

### Revenue History

|                              | 2013<br><u>ACTUAL</u> | 2014<br><u>ACTUAL</u> | 2015<br><u>BUDGET</u> | 2016 DEPT.<br><u>REQUESTED</u> | 2016<br><u>BUDGET</u> | 2017 DEPT.<br><u>REQUESTED</u> | DRAFT 2017<br><u>BUDGET</u> |
|------------------------------|-----------------------|-----------------------|-----------------------|--------------------------------|-----------------------|--------------------------------|-----------------------------|
| CHARGES & FEES               | \$157,771             | \$109,461             | \$147,537             | \$147,537                      | \$147,537             | \$95,537                       | \$95,537                    |
| <b>TOTAL PROGRAM REVENUE</b> | \$157,771             | \$109,461             | \$147,537             | \$147,537                      | \$147,537             | \$95,537                       | \$95,537                    |

### DIST COURT INTENSIVE PROBATION



### Strategic Outcomes

| <u>Indicator</u>              | 2011<br><u>Actual</u> | 2012<br><u>Actual</u> | 2013<br><u>Actual</u> | 2014<br><u>Actual</u> | 2015<br><u>Target</u> | 2016<br><u>Target</u> | 2017<br><u>Target</u> |
|-------------------------------|-----------------------|-----------------------|-----------------------|-----------------------|-----------------------|-----------------------|-----------------------|
| Number of Jail bed days saved | 20,409                | 19,373                | 17,429                | 11,135                | 11,135                | 11,135                | 11,135                |

### Other Key Indicators

| <u>Indicator</u>                                | 2011<br><u>Actual</u> | 2012<br><u>Actual</u> | 2013<br><u>Actual</u> | 2014<br><u>Actual</u> | 2015<br><u>Target</u> | 2016<br><u>Target</u> | 2017<br><u>Target</u> |
|-------------------------------------------------|-----------------------|-----------------------|-----------------------|-----------------------|-----------------------|-----------------------|-----------------------|
| Number of ISP Officers                          | 1                     | 1                     | 1                     | 1                     | 1                     | 1                     | 1                     |
| Dollar amount saved to county for jail bed days | 653,088               | 619,936               | 509,632               | 356,308               | 356,308               | 356,308               | 356,308               |