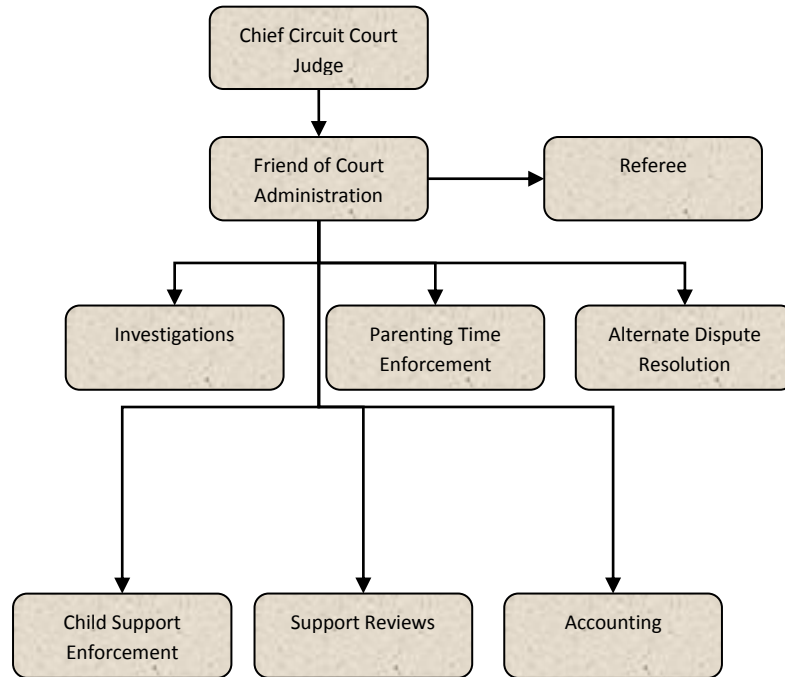




# Friend of the Court

---



## Mission Statement

---

In keeping with the best interest of children, the Jackson County Friend of the Court will provide quality services in a fair and respectful manner.

## Programs

---

[Judgment Order Entry Fees](#)

[FOC Duties](#)



# Judgement Order Entry Fees

---

## Activities

Enforcement of court orders regarding custody, parenting time, and support of minor children. Conducts hearings, investigations, and makes reports and recommendations to the Court on those matters. The FOC offers mediation as an alternative dispute resolution process, for custody and parenting time issues.

## Strategic Plan Impact/Accomplishments

See FOC Duties budget page.

## Budget Adjustments

There are no significant budget adjustments to this program.

# FOC Duties

---

## Activities

Enforcement of court orders regarding custody, parenting time, and support of minor children. Conducts hearings and investigations, and makes reports and recommendations to the Court on those matters. The FOC offers mediation as an alternative dispute resolution process, for custody and parenting time issues.

## Strategic Plan Impact

### ✓ Safe Community

Investigating and making custody, parenting time, and support recommendations helps ensure the proper care and custody of children. Conciliation allows parents to mediate their disputes and to reach their own custody, parenting time, and support agreements, which reduces the likelihood of parental kidnapping, non-payment of support, and parental alienation. Domestic Violence Screening and Safety Planning for families with domestic



violence contributes to a safe community by providing safe options for parents at risk or struggling with domestic violence. The FOC has also partnered with Aware Inc. and Safe Havens to provide supervised parenting time and exchanges for families with domestic violence. Reporting suspected abuse and neglect and conducting criminal history checks on FOC employees and vendors contributes to a safe community.

Through its participation in the Michigan Prisoner Re-Entry Initiative (MPRI), the FOC reviews parolee support obligations to ensure that support is set at a reasonable amount, and focuses more on job seeking initiatives as opposed to demanding unrealistic payment plans. This reduces parolee anxiety, feelings of hopelessness, and the chance of a parolee returning to a life of crime. The Warrant Unit arrests individuals who have outstanding warrants.

Safeguarding confidential FOC files keeps the community safe from improper disclosure of confidential information.

### ✓ **Economic Development**

The duties performed by the Enforcement/Casework, Bench Warrant, and Interstate Units advances economic development. By enforcing and collecting child and spousal support, Jackson's children and families are afforded financial support to help them meet their basic needs. Support is often spent in the community, which ensures continued growth and vibrancy within the local, regional, state, and global marketplace.

Additionally, the Friend of the Court is partnering with Michigan Works and Temporary Employment Agencies to connect unemployed or underemployed parents with educational and job opportunities.

The Friend of the Court has also partnered with MDRC and the Families Forward Demonstration to provide educational and employment assistance to underemployed payers of support.

The timely entry and modification of support orders into the Michigan Child Support Enforcement System by the Accounting Department is critical to the receipting and distribution of support payments. The FOC Support Services Unit, in addition to the Michigan Disbursement Unit, accepts payments locally to ensure that no money is turned away. By reviewing support obligations, the FOC helps ensure that support is set at



manageable levels. Customers are more likely to pay their support, if they feel their income has been fairly evaluated.

Regular support payments decrease public assistance involvement, which places an unnecessary burden on taxpayers and negatively impacts the economy.

✓ **Healthy Community**

The FOC program has a direct impact on the healthy community strategic priority. By investigating and making recommended orders for custody and parenting time, this contributes to a healthy community by providing appropriate and safe parenting time and custody arrangements. In some cases, supervised parenting time may be appropriate, therapeutic services may be necessary, or non-traditional approaches for parenting may be required.

The Conciliation and Investigation Department works with parents to evaluate the best interests of children to create a healthy environment for that child to develop. The Enforcement Unit contributes to a healthy community by enforcing court ordered child support to ensure that the basic needs of children and families are met. In addition, the

Enforcement Unit enforces court ordered health insurance provisions and delinquent medical bills, which all directly relate to a healthy community. Reporting suspected child abuse and neglect also contributes to a healthy community by providing intervening services for the children at risk of abuse or neglect.

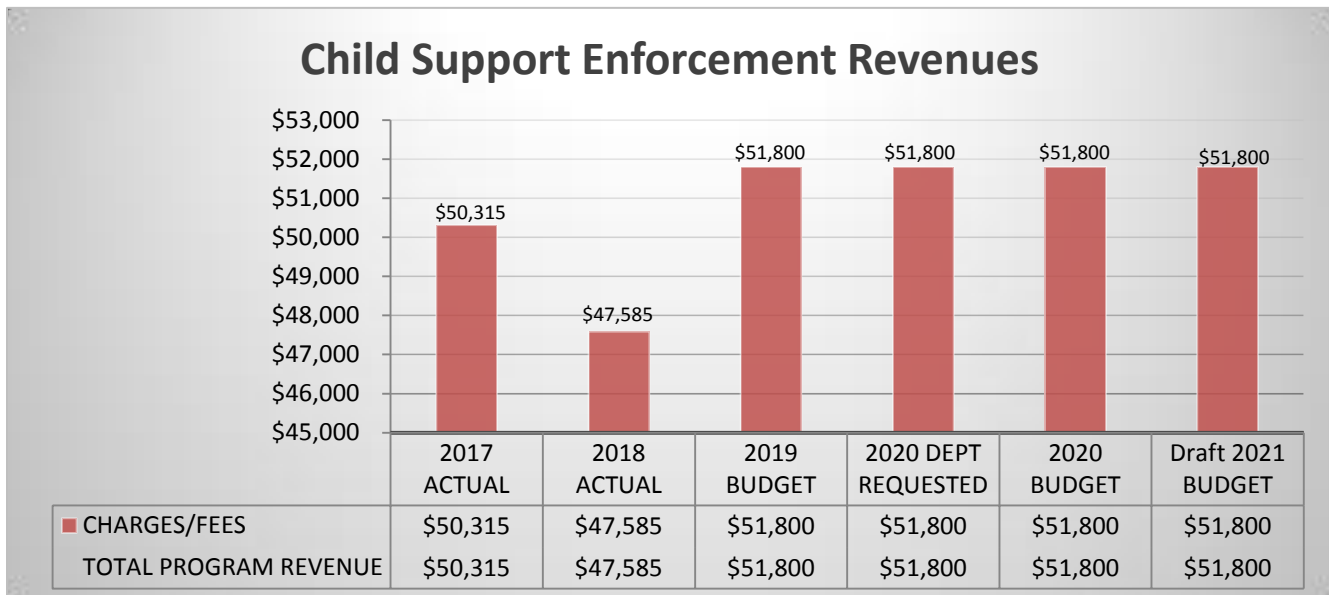
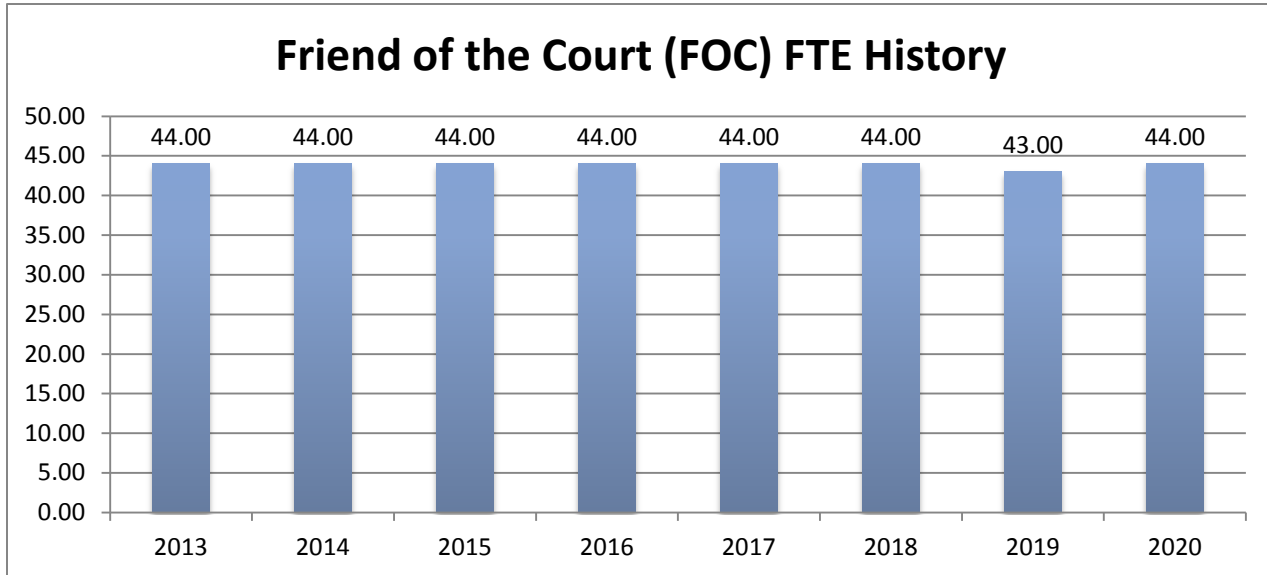
## Accomplishments

- ✓ Enforcement / Arrears Management: Collaborated with Matterhorn, Inc. to provide text and email notifications for hearings as well as text / email communication between caseworkers and clients.
- ✓ Collaboration: Partnered with Aware Inc and Safe Havens to provide supervised parenting time and exchanges.
- ✓ Collaboration: Partnered with MDRC and the Families Forward Demonstration to provide educational and employment services for under or unemployed payers of support.
- ✓ Changes: New Key Performance Indicators (KPI's) instituted from the Office of Child Support related to locate, medical support, timely enforcement, and timely modifications.



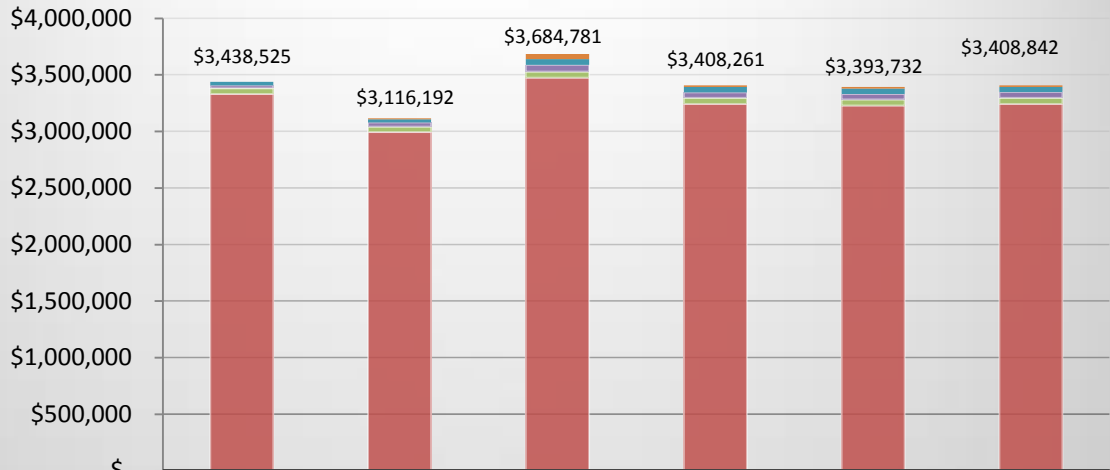
## Budget Adjustments

There are no significant budget adjustments to this program.





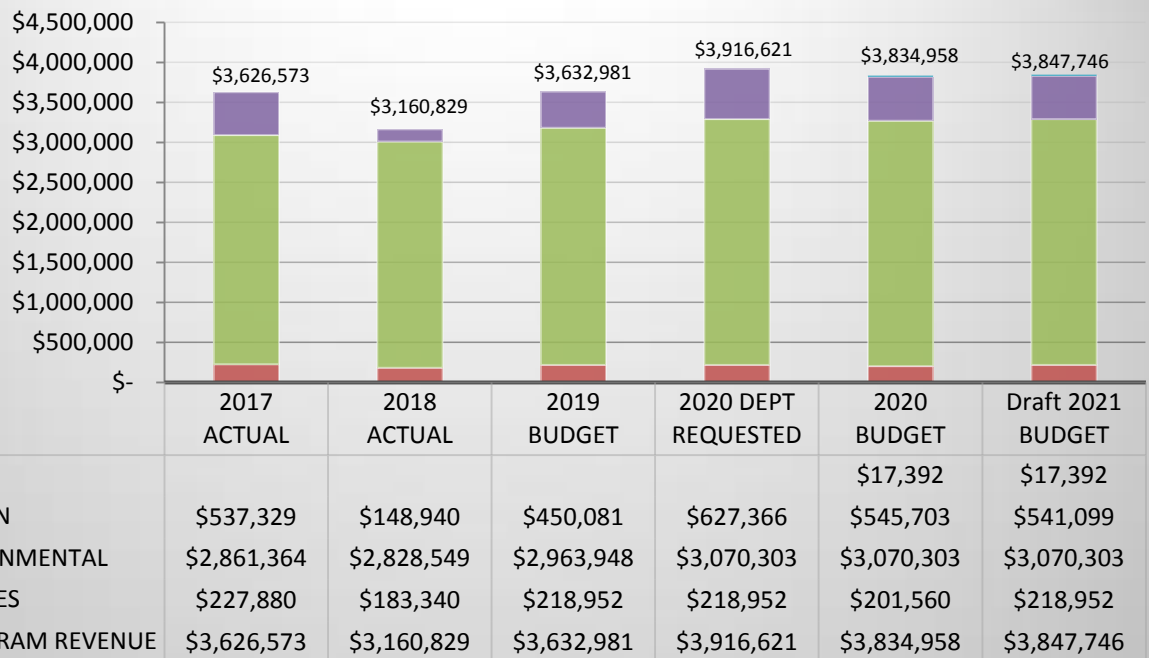
### FOC Duties Expenditures



	2017 ACTUAL	2018 ACTUAL	2019 BUDGET	2020 DEPT REQUESTED	2020 BUDGET	Draft 2021 BUDGET
CAPITAL OUTLAY	\$-	\$8,988	\$44,158	\$15,000	\$15,000	\$15,000
OTHER EXPENSES	\$31,750	\$28,079	\$50,600	\$46,600	\$46,600	\$46,600
CONTRACT SERVICES	\$25,471	\$37,358	\$61,553	\$49,091	\$49,091	\$50,091
SUPPLIES & MATERIALS	\$50,110	\$46,560	\$53,900	\$53,900	\$53,900	\$53,900
PERSONNEL SERVICES	\$3,331,194	\$2,995,207	\$3,474,570	\$3,243,670	\$3,229,141	\$3,243,251
<b>TOTAL PROGRAM COSTS</b>	<b>\$3,438,525</b>	<b>\$3,116,192</b>	<b>\$3,684,781</b>	<b>\$3,408,261</b>	<b>\$3,393,732</b>	<b>\$3,408,842</b>



### FOC Duties Revenues



### Strategic Outcomes

Indicator	2016 Actual	2017 Actual	2018 Actual	2019 Target	2020 Target	2021 Target
Current Support Percentage Collected	68.31	69.28	69.5	81	81	81
Percent of cases receiving arrears collections	69.6	70.82	70.5	70	70	70
Total amount of support collected	\$22,659,615	\$22,426,079	\$22,126,018	\$22.1 million	\$22.1 million	\$22.1 million



### Other Key Indicators

<u>Indicator</u>	<u>2016 Actual</u>	<u>2017 Actual</u>	<u>2018 Actual</u>	<u>2019 Target</u>	<u>2020 Target</u>	<u>2021 Target</u>
Total number of Cases	13,857	13,633	13,492	13,000	13,000	13,000
Telephone calls handled	31,464	29,538	25,655	25,000	25,000	25,000
Conciliations/investigations completed	427	397	428	415	415	415
Support reviews completed	675	775	943	800	800	800
Wednesday show cause hearings held	3453	3328	4736	4500	4500	4500
% Cases with locate action within 30 days			97.2%	75%	75%	75%
% Support Reviews within 180 days			98.0%	75%	75%	75%
Average wait time per phone call (min)	2 min	2 min 1 sec	1 min 4 sec	2 min	2 min	2 min
% Cases with timely enforcement action			94.6%	75%	75%	75%
Grievances Acknowledged / Total	0 / 10	1 / 13	1 / 8	2 / 10	2 / 10	2 / 10