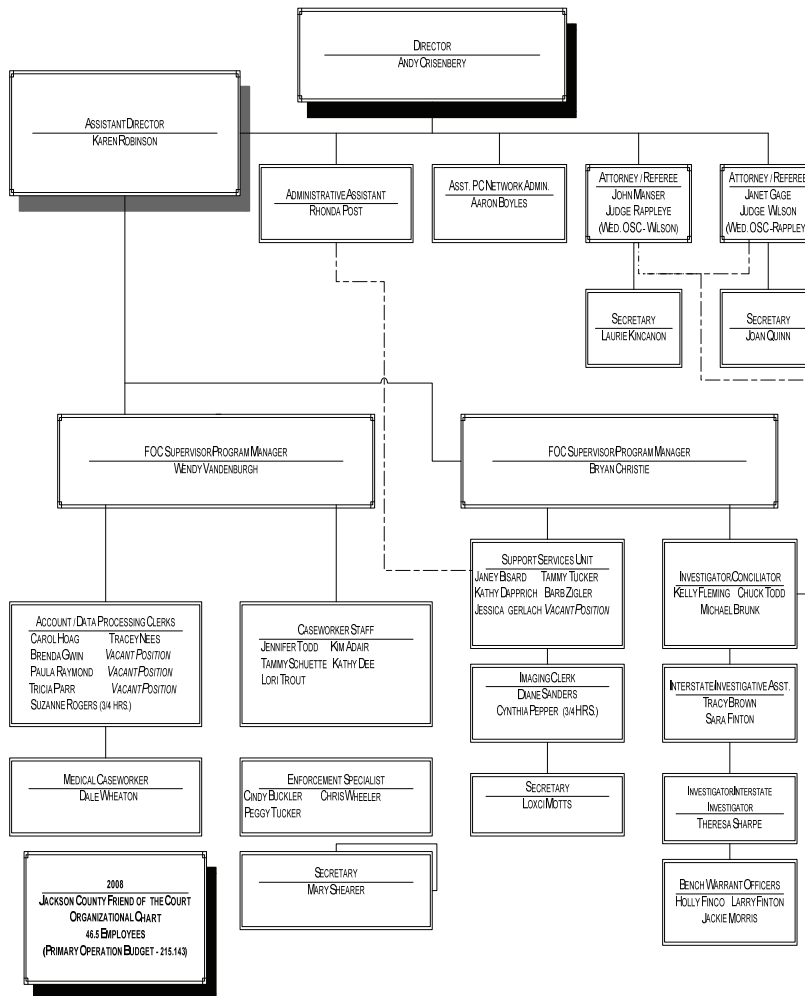




Friend of the Court—Grand Total



Activities

- The Friend of the Court (FOC) is the domestic relations branch of the Circuit Court Family Division. The FOC performs many custody, parenting time, and support related activities, including conducting court ordered investigations, conciliation conferences on new divorce cases, three year statutorily required support reviews, performing custody and parenting time enforcement duties, Referee hearings, formal mediation, and many other administrative duties.

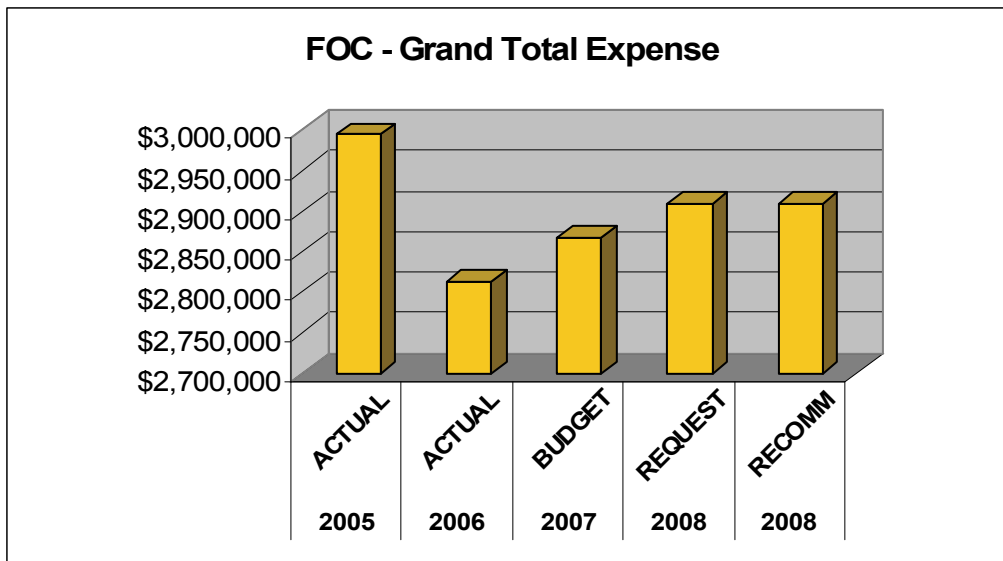
Mission Statement

The Jackson County Friend of the Court (FOC) will enthusiastically and fairly perform its statutorily mandated investigative, enforcement, mediation, referee, accounting, and administrative duties with a customer-friendly approach, and with the "best interests of the children" being at the forefront of everything it does.

2008 Budget—Friend of the Court— Grand Total



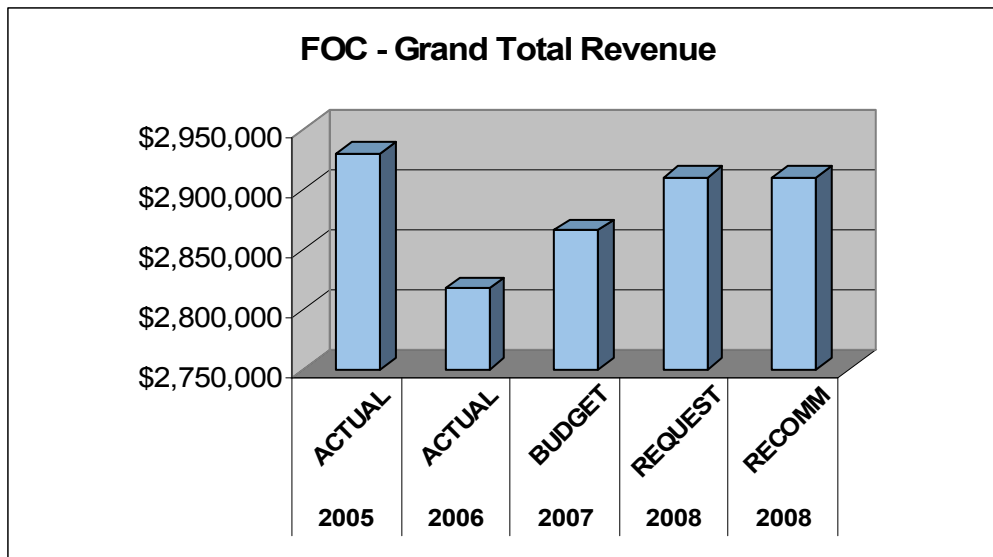
EXPENDITURES BY TYPE	2005 ACTUAL	2006 ACTUAL	2007 BUDGET	2008 REQUEST	2008 RECOMM	% CHANGE 07 BUDGET TO 08 RECOMM
PERSONAL SERVICES	\$2,777,593	\$2,665,396	\$2,663,397	\$2,728,776	\$2,728,776	2.4%
SUPPLIES & MATERIALS	\$49,269	\$36,683	\$52,500	\$65,550	\$65,500	19.8%
CONTRACT SERVICES	\$94,139	\$52,328	\$54,340	\$50,840	\$50,840	-6.9%
OTHER EXPENSES	\$73,117	\$58,550	\$96,667	\$64,837	\$64,837	-49.1%
TRANSFER OUT	\$0	\$0	\$0	\$0	\$0	0.0%
TOTAL EXPENDITURES	\$2,994,118	\$2,812,957	\$2,866,904	\$2,910,003	\$2,909,953	1.5%



2008 Budget—Friend of the Court— Grand Total



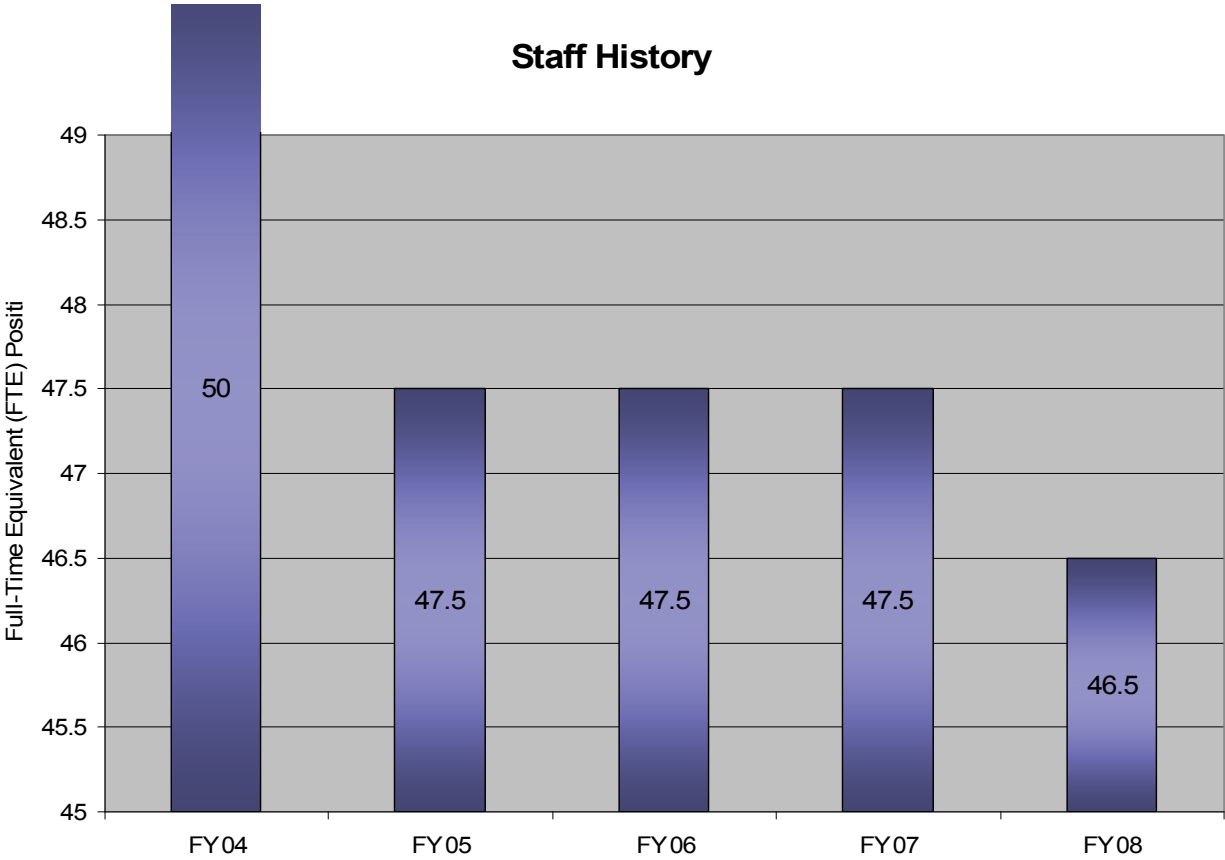
REVENUES BY TYPE	2005 ACTUAL	2006 ACTUAL	2007 BUDGET	2008 REQUEST	2008 RECOMM	% CHANGE 07 BUDGET TO 08 RECOMM
INTEREST/RENTS	\$0	\$0	\$0	\$0	\$0	0.0%
TAXES	\$0	\$0	\$0	\$0	\$0	0.0%
CHARGES/FEES	\$353,202	\$350,631	\$298,702	\$326,300	\$326,300	8.5%
TRANSFER IN	\$164,270	\$114,040	\$140,287	\$311,765	\$161,000	12.9%
TRANSFER IN FUND BAL- ANCE	\$0	\$0	\$0	\$0	\$150,765	100.0%
LICENSES/PERMITS	\$0	\$0	\$0	\$0	\$0	0.0%
FINES	\$0	\$0	\$0	\$0	\$0	0.0%
INTERGOVERNMENTAL	\$2,412,411	\$2,352,542	\$2,426,576	\$2,271,888	\$2,271,888	-6.8%
TOTAL REVENUES	\$2,929,883	\$2,817,213	\$2,865,565	\$2,909,953	\$2,909,953	1.5%



2008 Budget—Friend of the Court— Grand Total



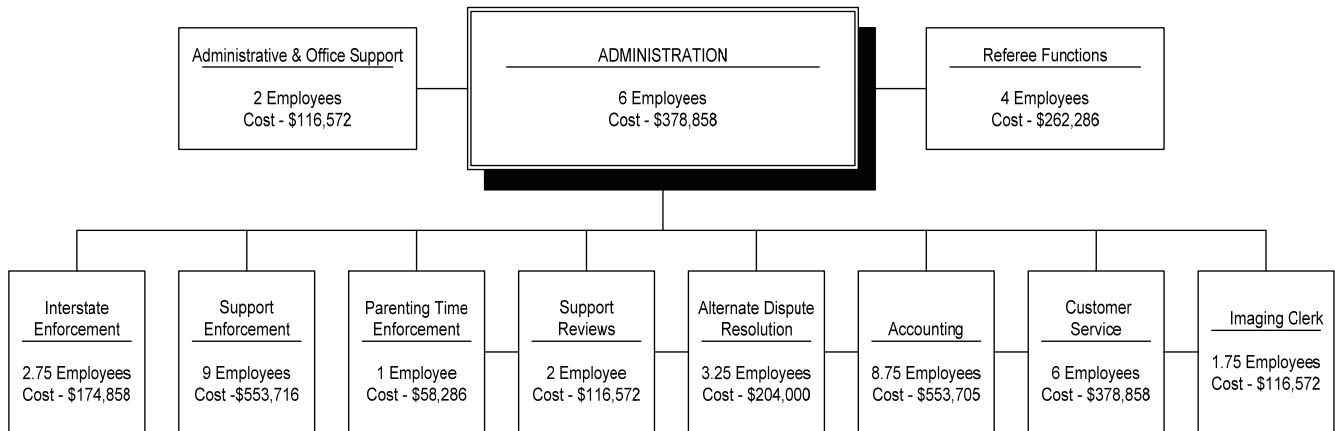
Staff History



2008 Budget—Friend of the Court— Grand Total



2008 Friend of the Court Functional Chart



2008
Jackson County Friend of the Court
Organizational Chart
By Function, FTE and Cost
(Primary Operating Budget - 215.143)
46.5 Full Time Employees
Total Budget = \$2,914,283