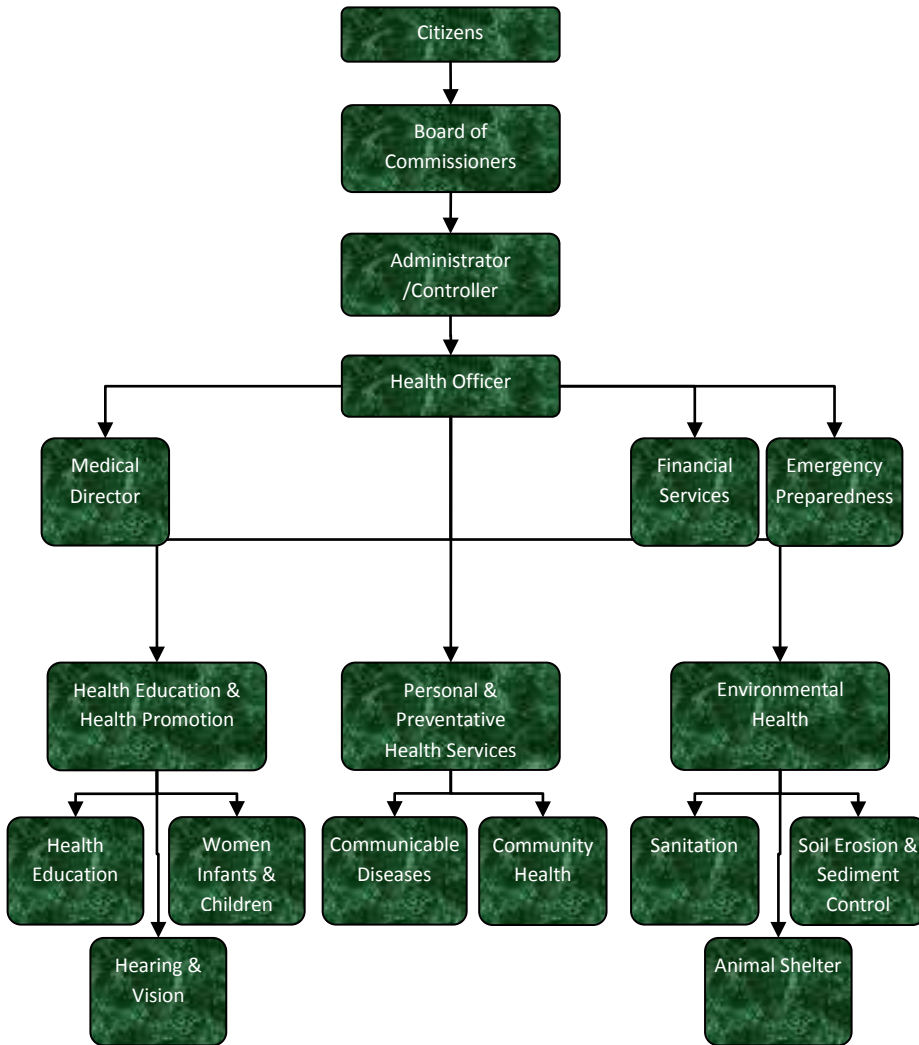


Soil Erosion & Sediment Control

Activities

Soil erosion & sediment control is a state and federal mandated program. Issue Soil Erosion Permits in accordance with Part 91 of the Natural Resources & Environmental Protection Act.



Mission Statement

Jackson County government, in cooperation with the community and local government units, strives through a planned process to deliver quality services that address public needs.



Strategic Plan Impact

✓ Healthy Community

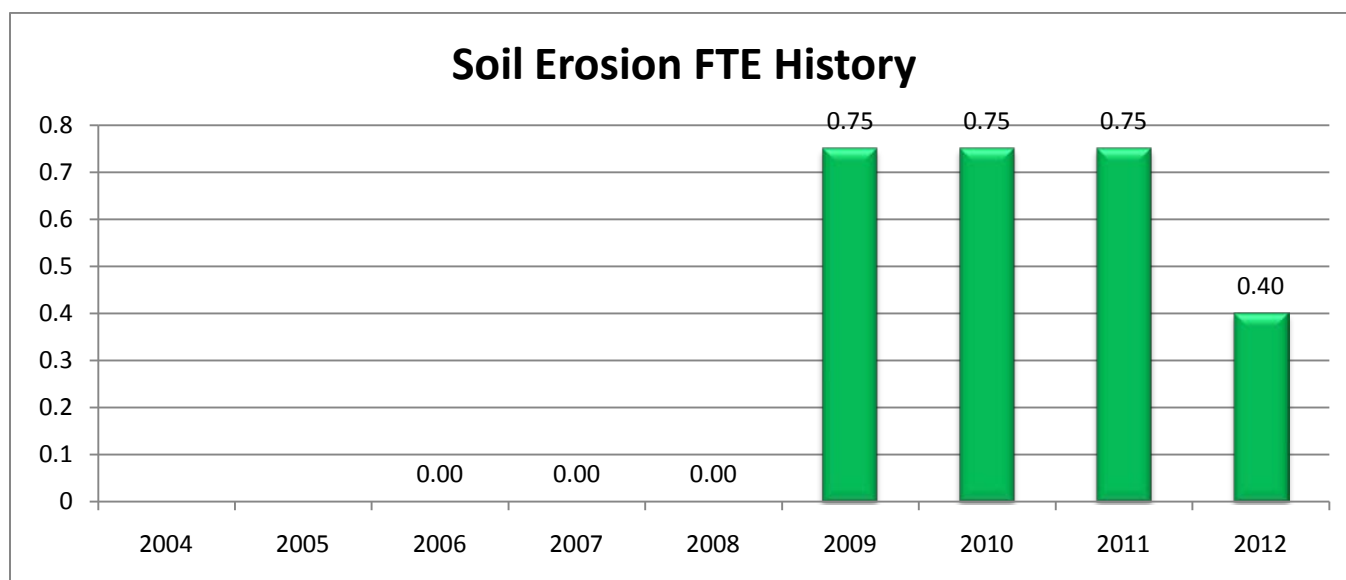
To operate the soil erosion program in accordance with Part 91 of the Natural Resources and Environmental Protection Act. This program helps ensure that our lakes, rivers and streams are protected from sediment runoff; thus, allowing our citizens to enjoy our natural resources.

Accomplishments

- ✓ We fully integrated the program into Environmental Health in 2008. We are operating the program in accordance with Part 91 of the Natural Resources and Environmental Protection Act, 1994, PA 451, as amended.

Budget Adjustments

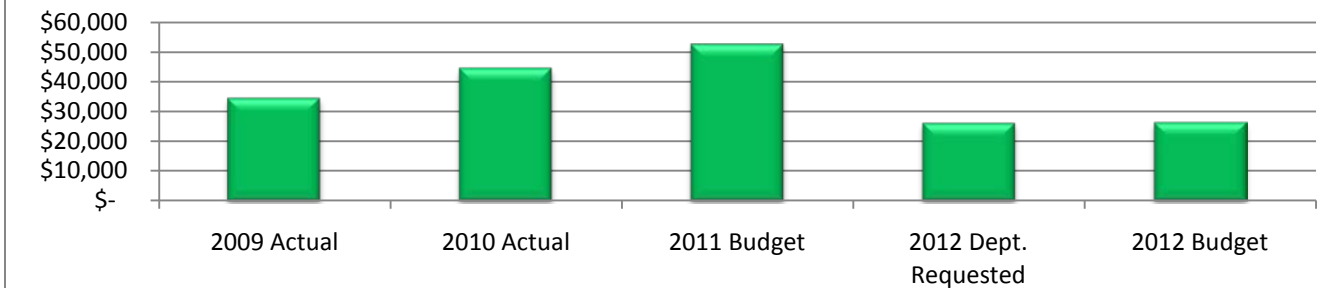
The 2012 budget contains .35 less full-time-equivalent employees in this program.



Expenditure History

	2009 <u>ACTUAL</u>	2010 <u>ACTUAL</u>	2011 <u>BUDGET</u>	2012 DEPT <u>REQUESTED</u>	2012 <u>BUDGET</u>
PERSONNEL SERVICES	58,482	44,484	51,623	25,109	25,312
TRANSFER OUT	(23,922)	-	-	-	-
OTHER EXPENSES	-	-	1,000	1,000	1,000
TOTAL PROGRAM COST	\$34,560	\$44,484	\$52,623	\$26,109	\$26,312

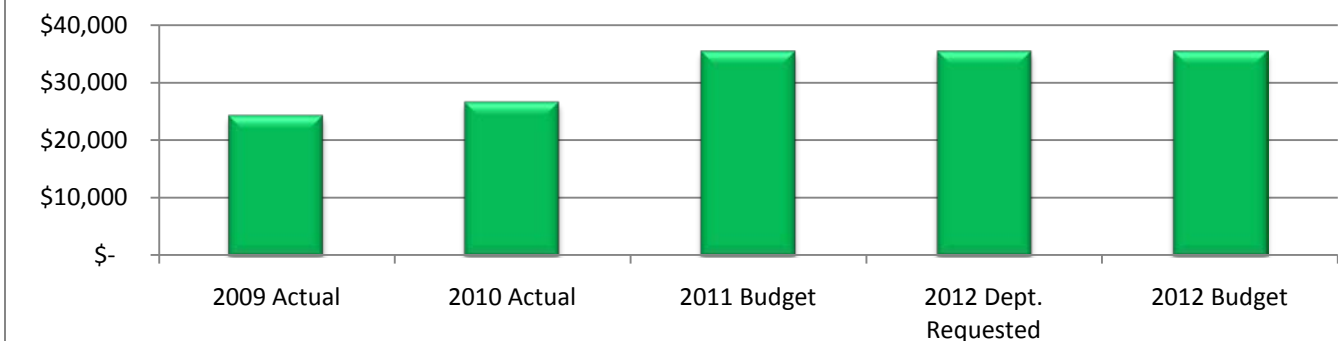
Soil Erosion Expenditures



Revenue History

	2009 <u>ACTUAL</u>	2010 <u>ACTUAL</u>	2011 <u>BUDGET</u>	2012 DEPT <u>REQUESTED</u>	2012 <u>BUDGET</u>
INTEREST/RENTS	-	-	315	315	315
CHARGES/FEES	24,230	24,690	33,695	33,695	33,695
OTHER	24	1,890	1,375	1,375	1,375
TOTAL PROGRAM COST	\$24,254	\$26,580	\$35,385	\$35,385	\$35,385

Soil Erosion Revenues



Strategic Outcomes

<u>Indicator</u>	<u>2007 Actual</u>	<u>2008 Actual</u>	<u>2009 Actual</u>	<u>2010 Actual</u>	<u>2011 Target</u>	<u>2012 Target</u>

Other Key Indicators

<u>Indicator</u>	<u>2007 Actual</u>	<u>2008 Actual</u>	<u>2009 Actual</u>	<u>2010 Actual</u>	<u>2011 Target</u>	<u>2012 Target</u>
Soil Erosion Permits Issued	N/A	N/A	100	85	150	125