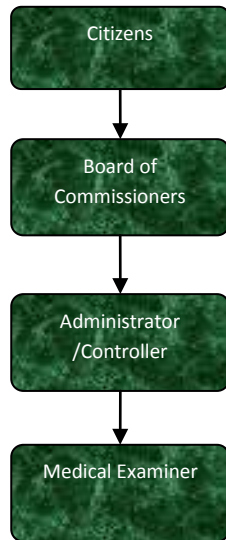


Medical Examiner



Activities

It is the duty of this office to investigate in certain instances the cause and manner of death within this county due to acts of violence, negligence or omission of a criminal nature and/or threats to protect public health.

Our office consists of two actual employees, the Medical Examiner and his Assistant.

The services of pathology assistants, forensic pathologists, forensic dentists, body removal services, field investigators, morgue facilities, etc., are either contracted or are on a fee for service basis.

All service providers work on an on-call basis and respond when needed, coordinating their efforts to be most effective.



Mission Statement

It is the mission of this office to complete an efficient, professional and dignified investigation of any death reported to this office which falls under the guidelines set forth by the State of Michigan and having occurred within the County of Jackson in order to determine cause and manner of death.

Strategic Plan Impact

✓ Safe Community

This is a State mandated office which has a direct impact on the safety of the community as we are responsible for investigating sudden & unexpected deaths. For example, the information gathered provides direct support for prosecution in criminal matters, or can be provided to families when the potential for a genetic problem is identified, therefore possibly saving lives in the future. Our office by and through our investigations prevents repeat injuries and works to identify any potential threat to the public health.

✓ Healthy Community

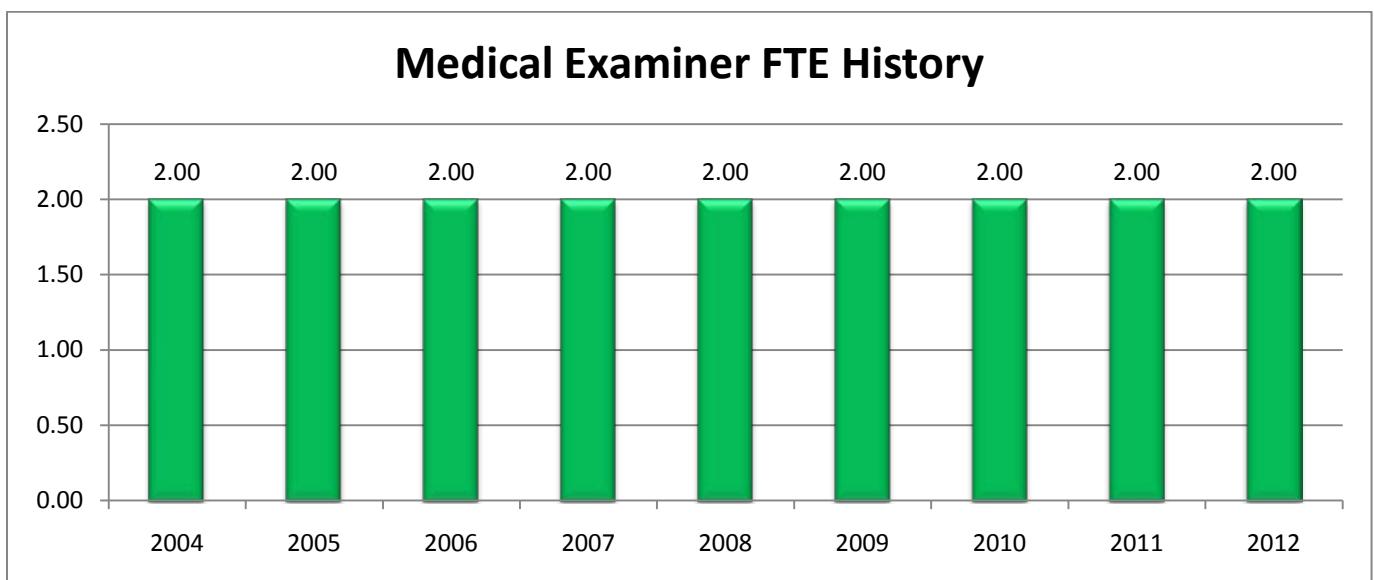
We help to provide critical and time sensitive information regarding the deaths in the community to protect the health and welfare of our citizens as well as establishing trends to be addressed to promote a healthier community.

Accomplishments

- ✓ Integrated the new Electronic Death Registration System (EDRS) for the State of Michigan into our daily operations.
- ✓ Operating one of the first two pilot sites of the EDRS in the state providing continuous feedback to improve the system.

Budget Adjustments

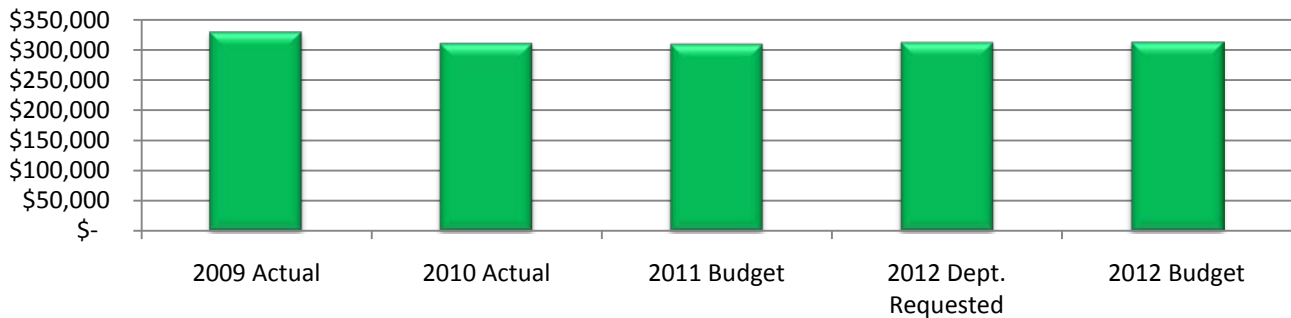
There are no significant budget adjustments to this program.



Expenditure History

	2009 <u>ACTUAL</u>	2010 <u>ACTUAL</u>	2011 <u>BUDGET</u>	2012 DEPT <u>REQUESTED</u>	2012 <u>BUDGET</u>
PERSONNEL SERVICES	83,797	84,039	84,437	87,093	87,690
SUPPLIES & MATERIALS	4,605	3,231	5,700	5,700	5,700
CONTRACT SERVICES	233,281	216,360	208,950	208,950	208,950
OTHER EXPENSES	8,387	7,264	10,577	10,577	10,577
TOTAL PROGRAM COST	\$330,070	\$310,894	\$309,664	\$312,320	\$312,917

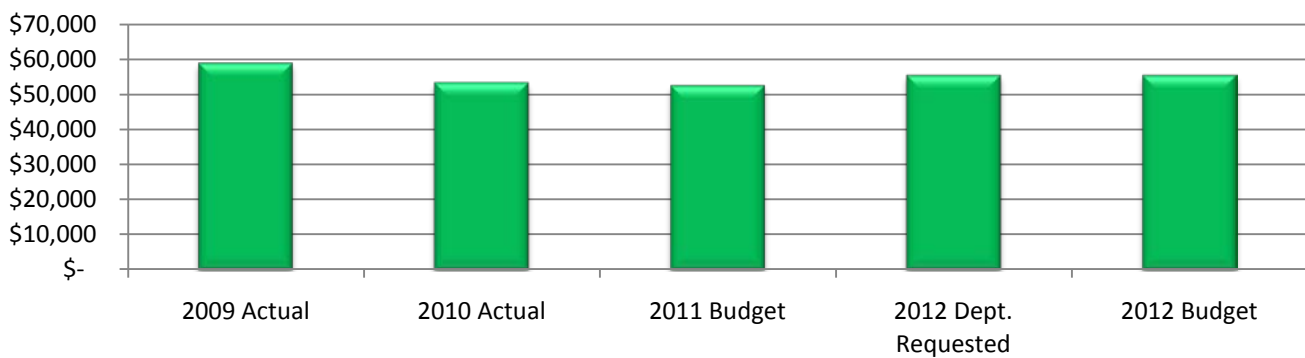
Medical Examiner Expenditures



Revenue History

	2009 <u>ACTUAL</u>	2010 <u>ACTUAL</u>	2011 <u>BUDGET</u>	2012 DEPT <u>REQUESTED</u>	2012 <u>BUDGET</u>
CHARGES/FEES	58,917	53,333	52,500	52,500	52,500
TOTAL PROGRAM COST	\$58,917	\$53,333	\$52,500	\$52,500	\$52,500

Medical Examiner Revenues



Strategic Outcomes

Indicator	2007 Actual	2008 Actual	2009 Actual	2010 Actual	2011 Target	2012 Target
Percent of respondents who say they feel very or somewhat safe from violent crime	N/A	N/A	50%	N/D	51%	N/D

Other Key Indicators

Indicator	2007 Actual	2008 Actual	2009 Actual	2010 Actual	2011 Target	2012 Target
Cases Reviewed	291	258	326		294	
Autopsies Performed	147	129	159		150	150
Cremation Fees Collected	\$19,635	\$35,350	\$35,900		\$32,000	\$32,000
Prison Reimbursement Dollars	\$14,515	\$23,830	\$16,416	\$12,846	\$17,000	\$17,000
Report Fees / SUID Reimbursement Dollars	\$6,695	\$3,360	\$6,600		\$3,500	
ME	1	1	1	1	1	1
Forensic Pathologists	3	3	3	3	3	3
Diener (pathology assistants)	3	3	3	3	4	4
Field Investigators	8	8	8	8	8	8
Administrative Assistant	1	1	1	1	1	1
Average Cost Per Case for Forensic Pathologist	\$700	\$800	\$800	\$800	\$800	\$800
Average Cost Per Case for Diener	\$95	\$95	\$95	\$95	\$95	\$95
Average Cost Per Toxicology	\$165	\$165	\$180	\$180	\$180	\$180
Average Morgue Cost Per Autopsy	\$50	\$50	\$50	\$50	\$50	\$50
Average Cost For Field Investigator Per Day	\$100	\$100	\$100	\$100	\$100	\$100
Average Time Autopsy Completed After Body Delivery to Morgue	24 Hours	24 Hours	24 Hours	24 Hours	24 Hours	24 Hours
Average Time Until Completion of Final Autopsy Report	1-2 Months	1-2 Months	1-2 Months	1-2 Months	1-2 Months	1-2 Months