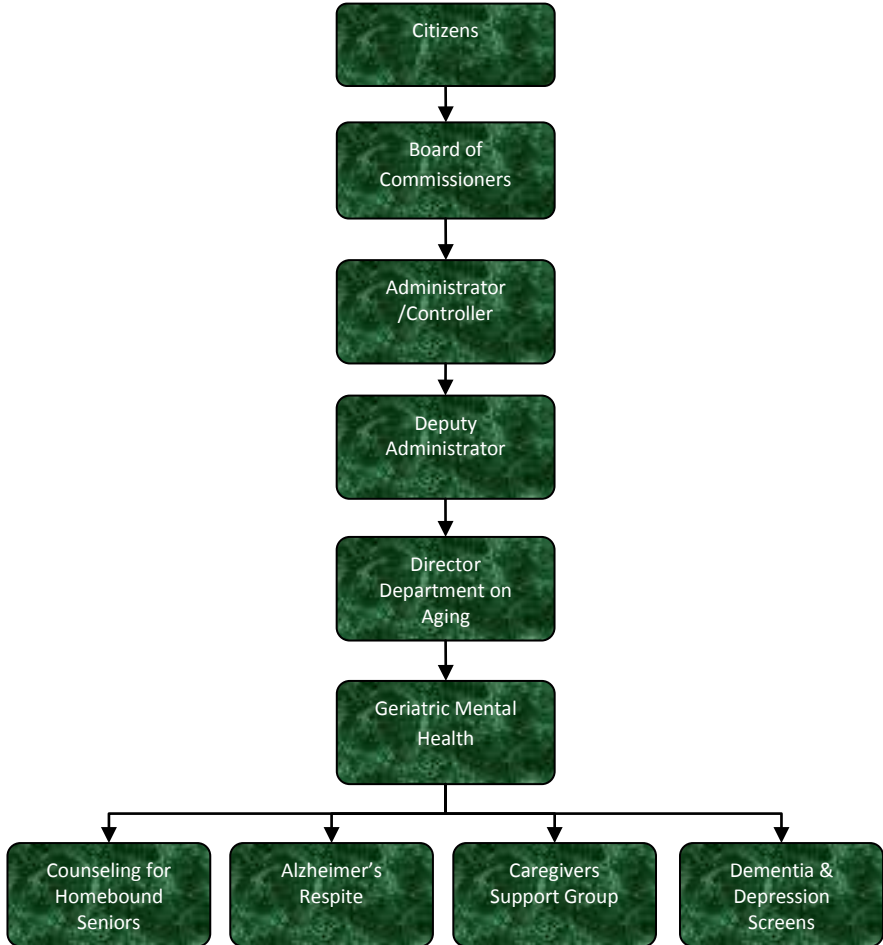


# Geriatric Mental Health



## Activities

Geriatric Mental Health Services, with funding from Life-Ways, Region 2 Area Agency on Aging, the County, and Senior Millage, offers support services for older adults and their caregivers.

Services include social work counseling, depression and memory loss screenings, support groups, outreach and training for community service providers, as well as Alzheimer's Respite Care.

## Mission Statement

To help Jackson County seniors to live more full, active, and independent lives.



## Strategic Plan Impact

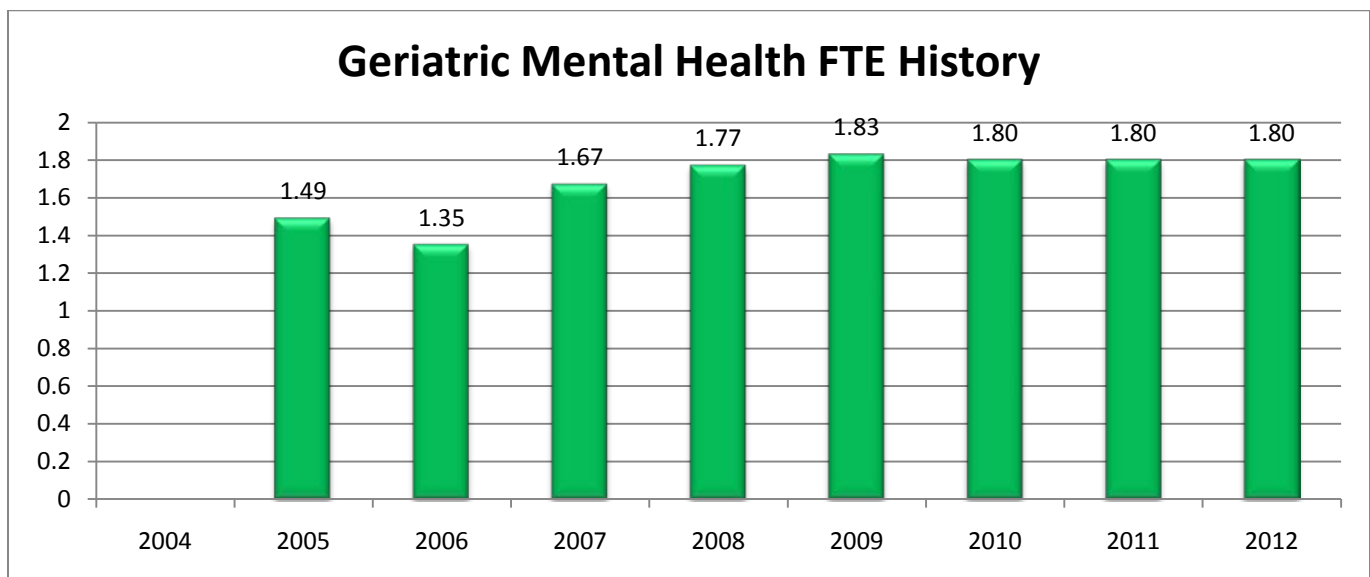
- ✓ **Safe Community**  
Geriatric Mental Health identifies and treats seniors with mental illnesses and/or dementia to prevent them from endangering themselves and others.
- ✓ **Healthy Community**  
Geriatric Mental Health holistically addresses the needs of seniors to improve physical and psychological functioning.
- ✓ **Recreational & Cultural Opportunities**  
Geriatric Mental Health improves senior and caregiver quality of life by providing information, counseling, support groups, training and other resources to families whose lives have been negatively affected by mental illnesses and dementia.

## Accomplishments

- ✓ Department receives reimbursement for serving Medicare/Medicaid counseling clients.
- ✓ Seniors receive increased validation toward progress via support groups.
- ✓ Support group focus expanded to include all caregivers of older adults.

## Budget Adjustments

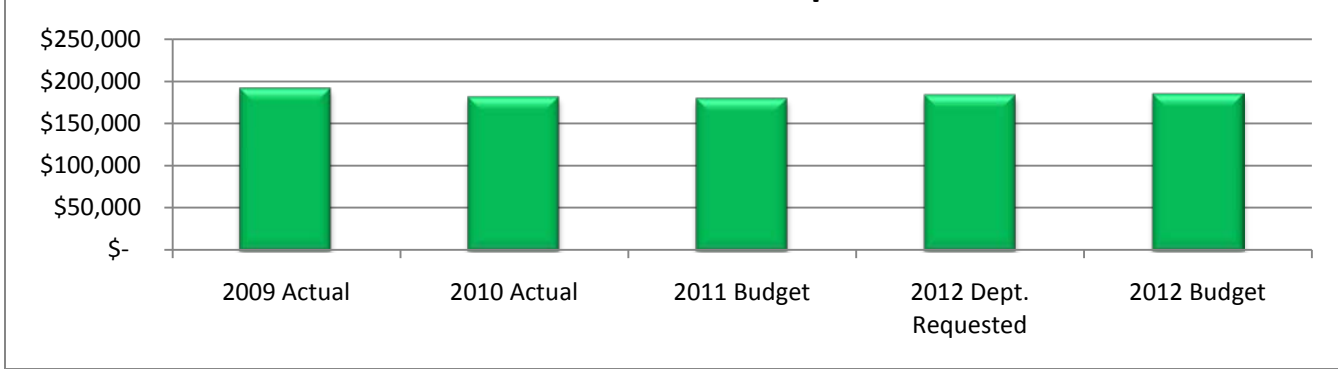
There are no significant adjustments to this program.



Expenditure History

	2009 <u>ACTUAL</u>	2010 <u>ACTUAL</u>	2011 <u>BUDGET</u>	2012 DEPT <u>REQUESTED</u>	2012 <u>BUDGET</u>
PERSONNEL SERVICES	115,618	116,167	117,303	121,245	122,392
SUPPLIES 7 MATERIALS	904	600	850	850	850
CONTRACT SERVICES	450	650	768	768	768
OTHER EXPENSES	74,935	64,276	60,936	60,936	60,936
<b>TOTAL PROGRAM COST</b>	<b>\$191,907</b>	<b>\$181,693</b>	<b>\$179,857</b>	<b>\$183,799</b>	<b>\$184,946</b>

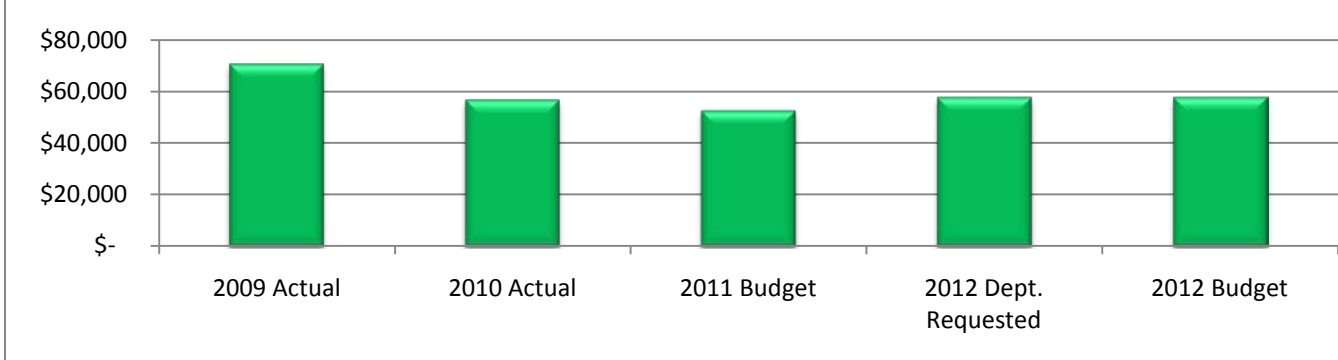
Geriatric Mental Health Expenditures



Revenue History

	2009 <u>ACTUAL</u>	2010 <u>ACTUAL</u>	2011 <u>BUDGET</u>	2012 DEPT <u>REQUESTED</u>	2012 <u>BUDGET</u>
CHARGES/FEES	16,089	16,073	16,066	16,066	16,066
INTERGOVERNMENTAL	6,130	720	-	-	-
OTHER	48,369	39,813	36,535	41,535	41,535
<b>TOTAL PROGRAM COST</b>	<b>\$70,588</b>	<b>\$56,606</b>	<b>\$52,601</b>	<b>\$57,601</b>	<b>\$57,601</b>

Geriatric Mental Health Revenues



### Strategic Outcomes

Indicator	2007 Actual	2008 Actual	2009 Actual	2010 Actual	2011 Target	2012 Target
Number of seniors better able to cope with their life circumstances as a result of counseling.	-	-	-	N/A	80%	80%
Percentage of caregivers better able to cope with caregiving as a result of Alzheimer's Respite.				N/A	85%	85%

### Other Key Indicators

Indicator	2007 Actual	2008 Actual	2009 Actual	2010 Actual	2011 Target	2012 Target
Clients screened for depression	63	64	67	56	60	60
Clients screened for dementia	34	31	32	16	25	25
Clients seen for Clinical Assessment and Referral services	43	43	60	64	50	50
Clients seen for supportive counseling	58	79	64	74	70	70
Counseling units	714	857.5	873.5	911.75	875	875
Screening time (in units)	157	134.25	127	88.25	100	100
Clinical Assessment and Referral time (in units)	93.75	86	131.25	162.25	130	130
Percent of counseling referrals converted to counseling clients within 7 business days.	N/A	N/A	N/A	N/A	80%	80%
Percent of counseling client symptoms lessened within brief, supportive therapy model parameters.	N/A	N/A	N/A	N/A	80%	80%
Counseling units per client	12.31	10.85	13.64	12.32	12.5	12.5