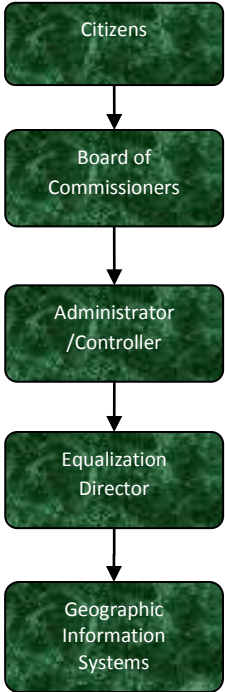


Geographic Information System



Activities

Promote, educate, & integrate the prevalent usage of GIS to allow increased productivity through accurate & informed decision making.

Provide the general public, private sector & associated governmental agencies access to enhanced GIS services & products that will assist them in meeting their business needs.

Efficiently create & maintain an enterprise based GIS which accurately & comprehensively represents all relevant County geographic data & information through workflow driven development of GIS data & applications.

Mission Statement

Create & maintain an environment for open communication, coordination & collaboration of the GIS efforts in Jackson County.



Strategic Plan Impact

✓ **Safe Community**

GIS is responsible for the creation and on-going maintenance for the Central Dispatch 911 system maps and address information. GIS provides support to local law enforcement with the location of sex offenders in relation to local schools.

✓ **Economic Development**

GIS supports economic development efforts to attract and retain business in the community through mapping. Partnerships between the GIS staff and the local Jackson Realtor's Association, the Enterprise Group, and the Land Bank facilitate the economic development process.

✓ **Healthy Community**

GIS provides public health mapping and spatial analysis. They assist with infectious disease surveillance, outbreak investigation, and planning and response activities.

✓ **Recreational & Cultural Opportunities**

GIS uses mapping to inform the public about recreational areas and activities within Jackson County.

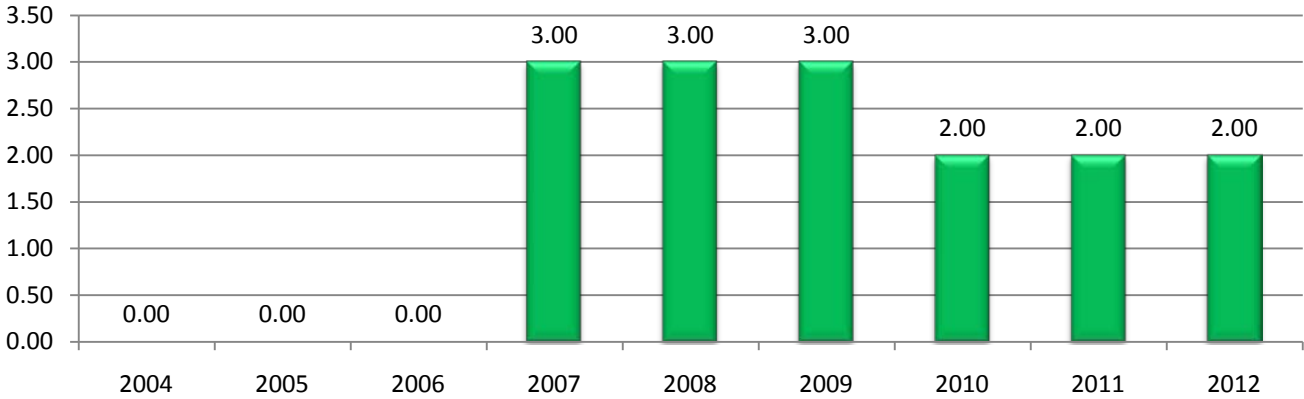
Accomplishments

- ✓ Completed repositioning of the parcels to the remonumented section corners.
- ✓ Kept the parcel file updated as changes are received.
- ✓ Successfully negotiated a contract for a 2011 aerial flight.
- ✓ Brought all local zoning up to date and published to the web site.
- ✓ Transitioned web site from Arclms to ArcServer.
- ✓ Continued to update and improve the 911 mapping and addressing.
- ✓ Assisted Census Bureau with 2010 Census.
- ✓ Secured software and started preparation for 2011 reapportionment.
- ✓ Worked with Road Commission to create traffic volumes layer to add to the web site.

Budget Adjustments

One FTE, a GIS Specialist, was eliminated for the 2011 Fiscal Year.

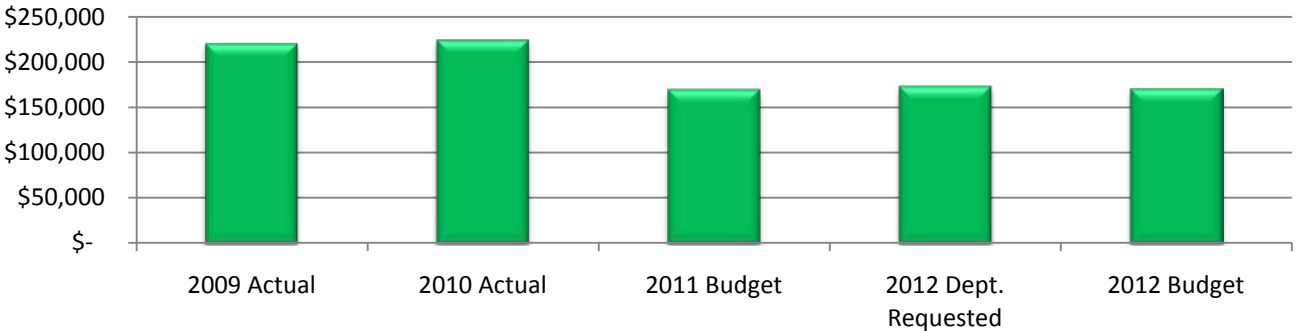
Geographic Information Systems (GIS) FTE History



Expenditure History

	2009 ACTUAL	2010 ACTUAL	2011 BUDGET	2012 DEPT REQUESTED	2012 BUDGET
PERSONNEL SERVICES	200,833	205,187	145,252	147,716	148,922
SUPPLIES & MATERIALS	2,512	806	1,000	2,050	2,050
CONTRACT SERVICES	12,742	13,999	18,500	18,000	14,000
OTHER EXPENSES	3,965	3,834	4,825	5,325	5,325
TOTAL PROGRAM COST	\$220,052	\$223,826	\$169,577	\$173,091	\$170,297

GIS Expenditures

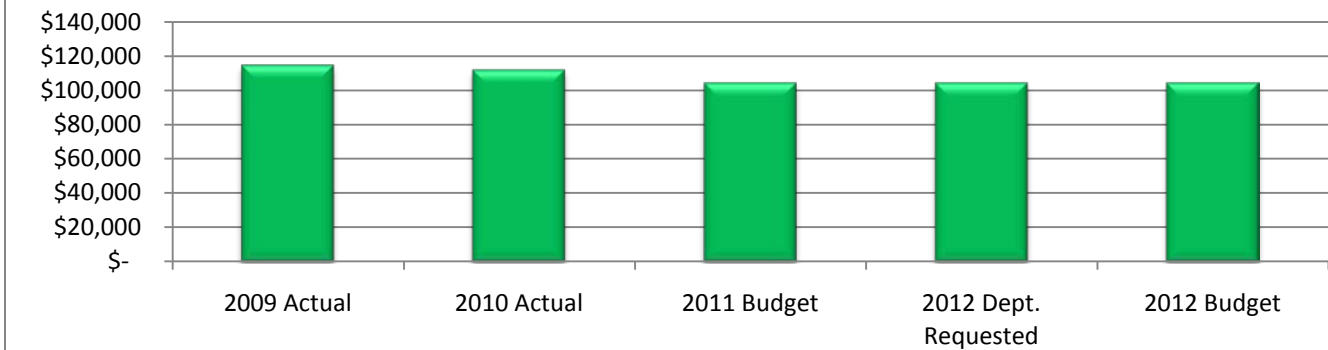


Equalization - GIS

Revenue History

	2009 <u>ACTUAL</u>	2010 <u>ACTUAL</u>	2011 <u>BUDGET</u>	2012 DEPT <u>REQUESTED</u>	2012 <u>BUDGET</u>
CHARGES/FEES	114,366	111,596	104,000	104,000	104,000
TOTAL PROGRAM COST	\$114,366	\$111,596	\$104,000	\$104,000	\$104,000

GIS Revenues



Strategic Outcomes

<u>Indicator</u>	2007 <u>Actual</u>	2008 <u>Actual</u>	2009 <u>Actual</u>	2010 <u>Actual</u>	2011 <u>Target</u>	2012 <u>Target</u>
Update all zoning and display on GIS web site	N/A	N/A	N/A	N/A	19	19

Other Key Indicators

<u>Indicator</u>	2007 <u>Actual</u>	2008 <u>Actual</u>	2009 <u>Actual</u>	2010 <u>Actual</u>	2011 <u>Target</u>	2012 <u>Target</u>
Parcel splits/combinations	N/A	N/A	672	599	850	600
QC parcel map to database	N/A	N/A	78,647	76,908	80,000	78,000
Address point files created and maintained	N/A	55,265	50,038	68,236	51,000	72,000
Edit and update parcel and road centerline file	N/A	5,034	5,922	5,889	8,000	4,000
Reposition parcel file to remonumented section corners	N/A	N/A	N/A	N/A	80,000	80,000