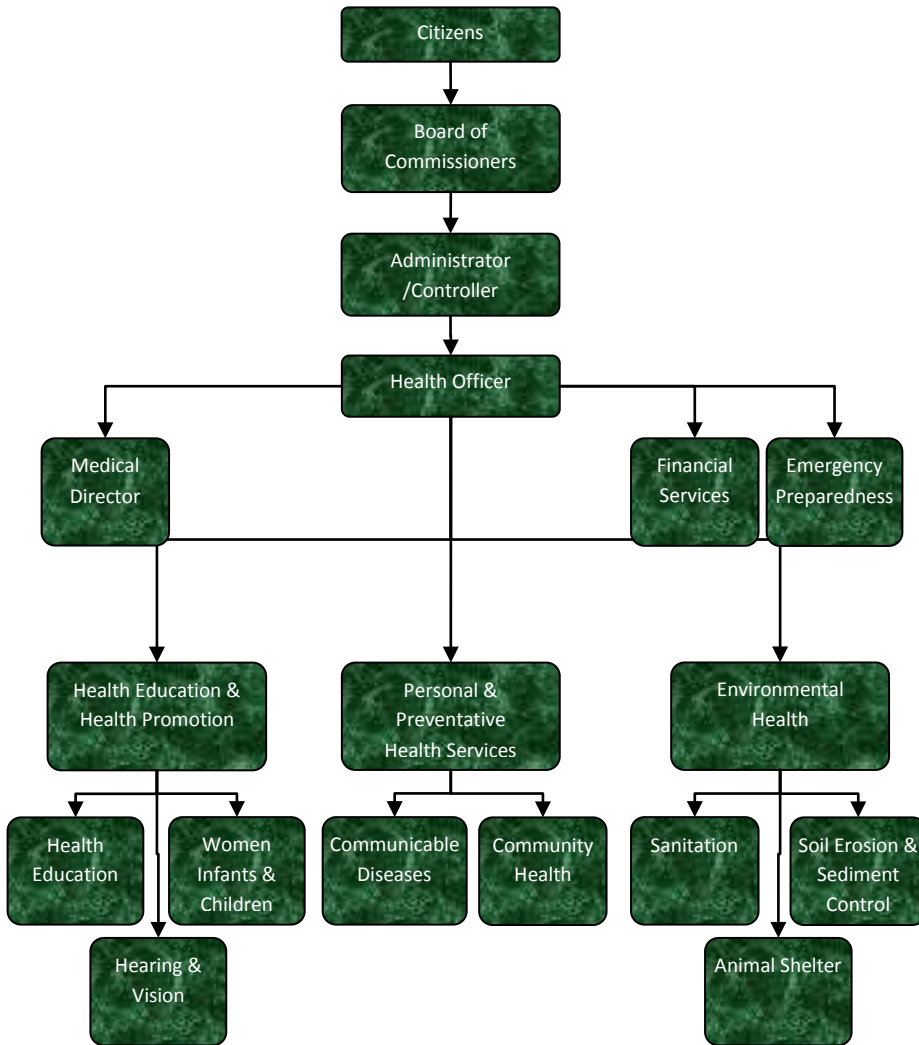


Early On



Activities

Early On is an early identification and early intervention system that provides and coordinates health, educational, and social services. Any child from birth to age three with special medical, physical or developmental needs, regardless of income, is eligible. The purpose of Early On is to enhance the child's development, provide family support and to reduce later needs.

Mission Statement

Early On families, support services and community partners commit to identifying, coordinating and evaluating services, programs, resources and supports available to eligible children 0-3 and their families. By promoting awareness through collaboration and community education, we strive to ensure maximum success of each Early On family.



Strategic Plan Impact

✓ **Healthy Community**

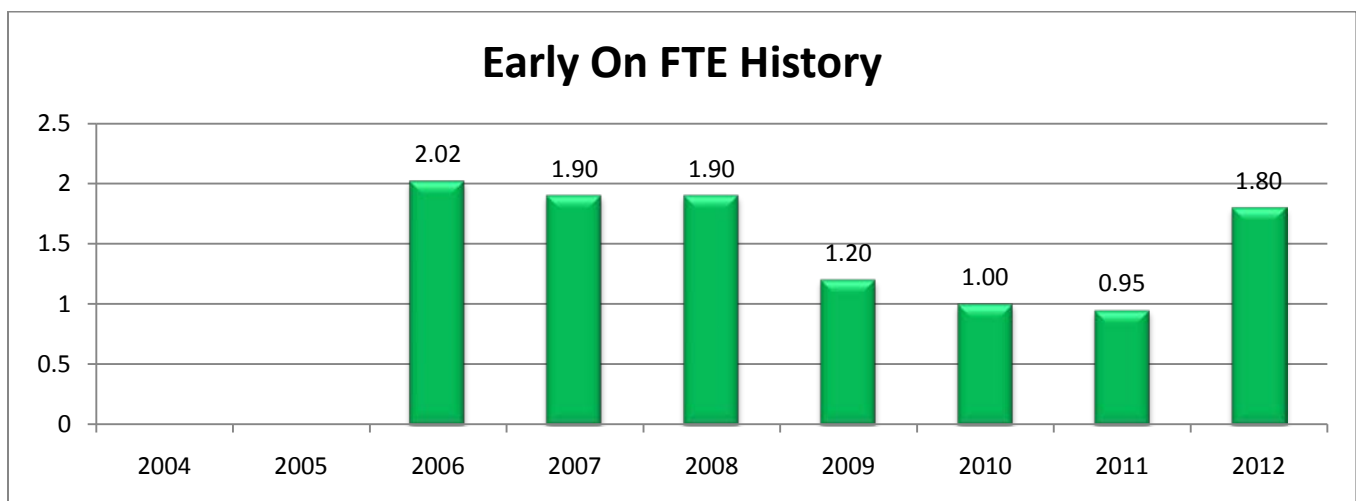
The goal of the program is to identify children ages birth to three with developmental delays or established medical conditions in order to increase capabilities and lessen the need for future services. This is done through inter-agency collaboration and service coordination for families.

Accomplishments

- ✓ The “Toy Talker” home visiting program was developed and 3 independent contractor positions were created with ARRA funds to provide additional family training through monthly home visits for Early On families.
- ✓ The Early On Program received a grant for \$9,323 from the Jackson County Intermediate School District Great Parents, Great Start Initiative. This grant was used to pay for Parents As Teachers curriculum training for the new “Toy Talker” Independent Contractors.
- ✓ The target set by the funding entity, the Michigan Department of Education Office of Special Education and Early Intervention, for children under age 12 months was exceeded.
- ✓ Jackson County Early On exceeded the target number and % of Jackson County children enrolled in the program by 57%.
- ✓ The Early On Program received a grant for \$1,000.00 from the Jackson Junior Welfare League to teach the “Happiest Babies on the Block Program.” This is a program developed to teach parents to calm their crying infants, thus preventing potential incidents of Shaken Baby Syndrome.

Budget adjustments

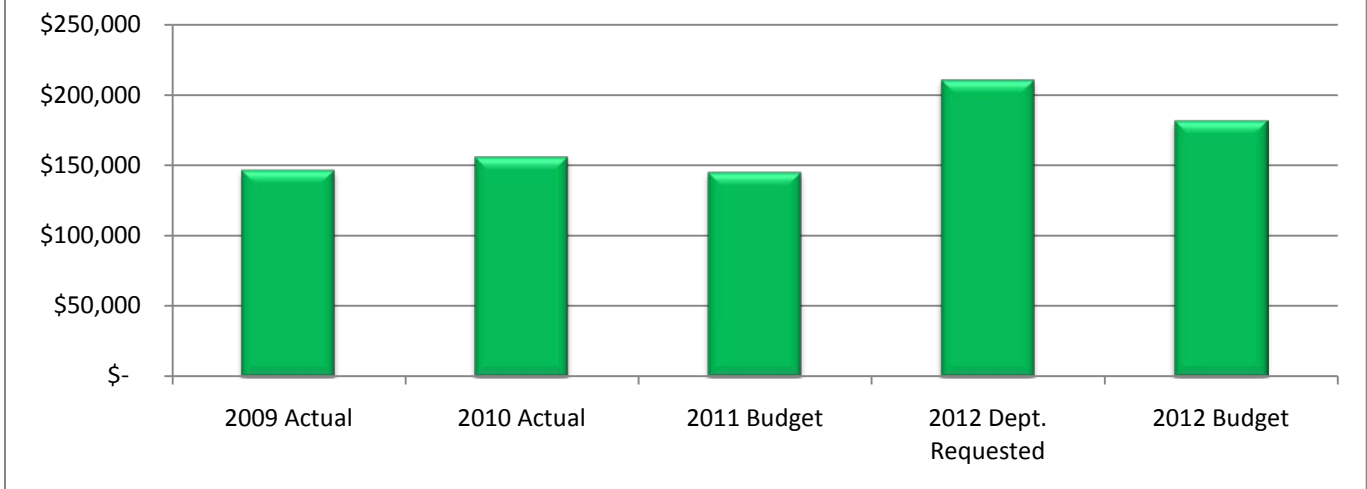
The 2012 budget includes an increase of .85 full-time-equivalent employees.



Expenditure History

	2009 <u>ACTUAL</u>	2010 <u>ACTUAL</u>	2011 <u>BUDGET</u>	2012 DEPT <u>REQUESTED</u>	2012 <u>BUDGET</u>
PERSONNEL SERVICES	81,339	100,143	83,314	148,481	149,539
SUPPLIES & MATERIALS	12,305	8,452	11,001	11,001	11,001
CONTRACT SERVICES	49,373	41,697	49,610	49,610	19,610
OTHER EXPENSES	3,555	5,757	1,200	1,200	1,200
TOTAL PROGRAM COST	\$146,572	\$156,049	\$145,125	\$210,292	\$181,350

Early On Expenditures

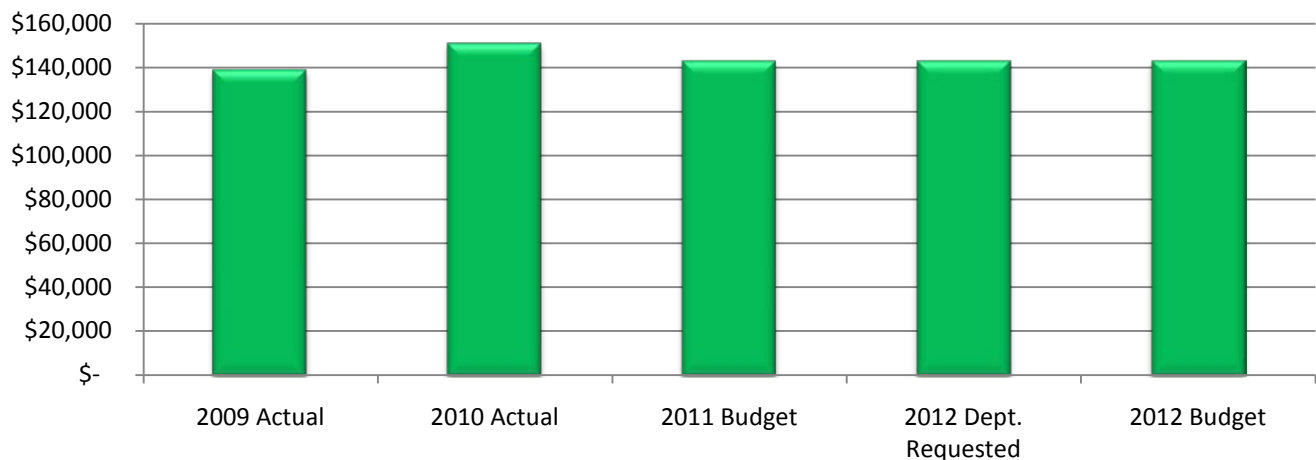


Revenue History

	2009 <u>ACTUAL</u>	2010 <u>ACTUAL</u>	2011 <u>BUDGET</u>	2012 DEPT <u>REQUESTED</u>	2012 <u>BUDGET</u>
INTERGOVERNMENTAL	-	9,904	-	-	-
OTHER	138,934	141,048	143,000	143,000	143,000
TOTAL PROGRAM COST	\$138,934	\$150,952	\$143,000	\$143,000	\$143,000

Health Department

Early On Revenues



Strategic Outcomes

Indicator	2007 Actual	2008 Actual	2009 Actual	2010 Actual	2011 Target	2012 Target
Annual Early On Family Survey completed by parents:						
Parents that reported EO services have helped them know their rights	60%	62%	54%	59%	60%	65%
Parents that reported EO services have helped them effectively communicate their child's needs	55%	57%	53%	56%	60%	60%
Parents that reported EO services have helped them help their child develop and learn	82%	81%	75%	81%	80%	83%

Other Key Indicators

Indicator	2007 Actual	2008 Actual	2009 Actual	2010 Actual	2011 Target	2012 Target
Children Served	297	303	364	446	400	400