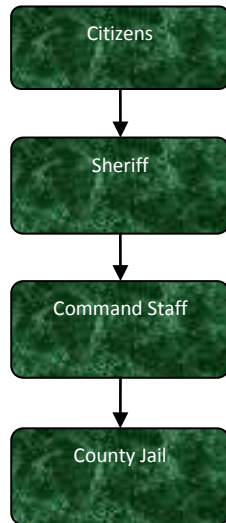


County Jail



Activities

The Corrections Division provides for the secure custody and total physical care of offenders lodged in the Jackson County Jail.

The department activities can be broken into three major categories; Custodial care, physical care and physical plant.

Mission Statement

The mission of the Jackson County Office of the Sheriff is to work in partnership with the citizens of Jackson County toward providing a safe environment while enhancing the quality of life consistent with the values and diversity of the community.



Strategic Plan Impact

✓ **Safe Community**

The Jackson County Jail is the central housing facility for all arrestees within the county. The jail works to ensure the community in which it serves is protected from those people that are incarcerated. The jail also provides a safe environment during the stay for those community members that become incarcerated within the facility. The Jackson County Jail strives to maintain a good working relationship with local, state and federal agencies. There were no escapes or in-custody deaths within the jail.

✓ **Healthy Community**

The jail medical staff closely monitors the inmates to see they are receiving prompt and appropriate medical care. The jail staff also closely monitors the inmate medical billing and confers with the medical staff to make certain inmates are receiving needed care. The jail staff also works hand-in-hand with local mental health agencies to ensure inmates receive mental health care should it be needed. The staff works with the Mental Health Court to identify inmates that qualify and may be eligible for their program.

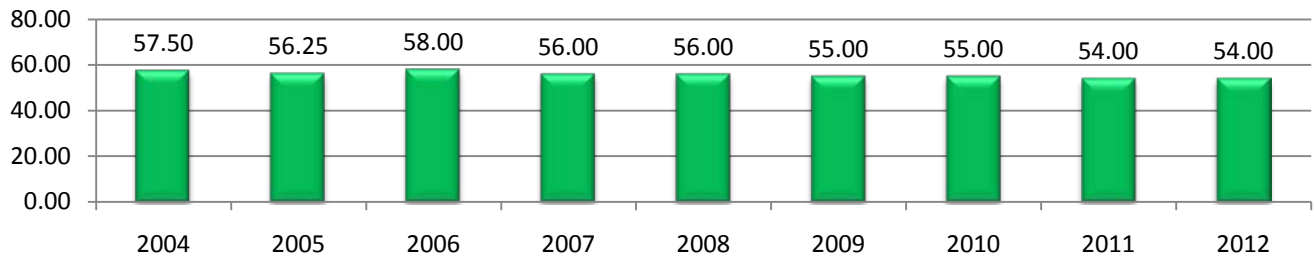
Accomplishments

- ✓ 100% compliance with the MDOC inspection.
- ✓ Worked closely in developing and maintaining the Mental Health Court, helping to alleviate the jail of those inmates that may be better suited in another environment.
- ✓ Calling card machines were implemented at both facilities to better serve the public.
- ✓ Booked over 10,000 inmates for first time in agency history.
- ✓ Through specialized use of housing of MDOC, out of county inmates and special MDOC inmates we generated over \$640,000 of revenue.
- ✓ The Jail Policy and Procedures were updated to favorably reflect MDOC administrative rules for jail and lock-ups.
- ✓ Deputies were given significantly more training than what is required by the State of Michigan.

Budget Adjustments

There are no significant budget adjustments to this program.

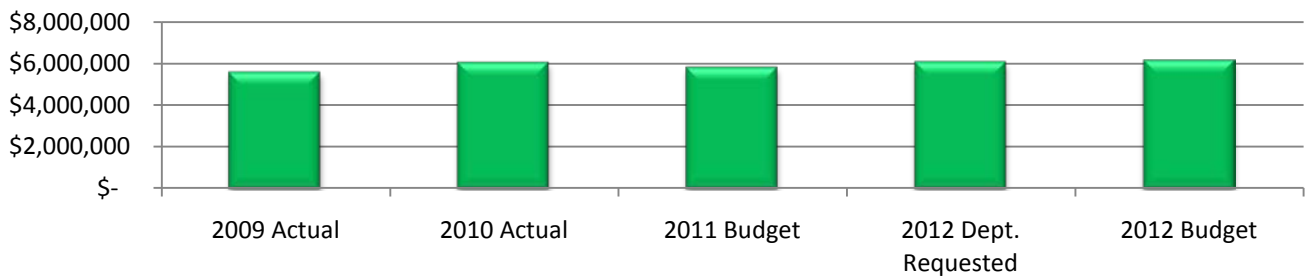
County Jail FTE History



Expenditure History

	2009 <u>ACTUAL</u>	2010 <u>ACTUAL</u>	2011 <u>BUDGET</u>	2012 DEPT <u>REQUESTED</u>	2012 <u>BUDGET</u>
PERSONNEL SERVICES	4,015,788	4,226,209	4,236,624	4,298,817	4,333,535
SUPPLIES & MATERIALS	701,564	793,987	644,615	744,615	794,615
CONTRACT SERVICES	545,077	633,679	553,950	637,108	637,108
OTHER EXPENSES	320,241	389,451	382,566	392,566	392,566
TOTAL PROGRAM COST	\$5,582,670	\$6,043,326	\$5,817,755	\$6,073,106	\$6,157,824

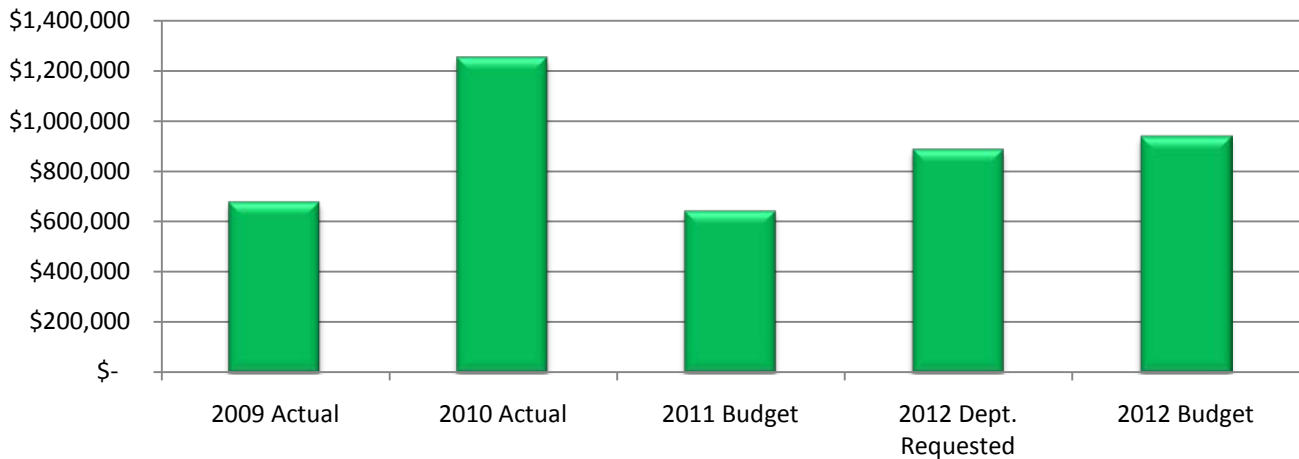
County Jail Expenditures



Revenue History

	2009 <u>ACTUAL</u>	2010 <u>ACTUAL</u>	2011 <u>BUDGET</u>	2012 DEPT <u>REQUESTED</u>	2012 <u>BUDGET</u>
CHARGES/FEES	458,889	1,028,526	400,000	645,000	695,000
FINES	9,250	10,280	11,000	11,000	11,000
OTHER	210,669	212,324	231,000	231,000	231,000
TOTAL PROGRAM COST	\$678,808	\$1,251,130	\$642,000	\$887,000	\$937,000

County Jail Revenues



Strategic Outcomes

Indicator	2007 Actual	2008 Actual	2009 Actual	2010 Actual	2011 Target	2012 Target
Percent of respondents who say they feel very or somewhat safe from violent crime	N/A	N/A	50%	51%	51%	53%
Percent of respondents who say they feel very or somewhat safe in their neighborhood during the day.	N/A	N/A	92%	93%	93%	94%
Percent of respondents who say they feel very or somewhat safe in their neighborhood after dark.	N/A	N/A	74%	75%	75%	77%

Other Key Indicators

Indicator	2007 Actual	2008 Actual	2009 Actual	2010 Actual	2011 Target	2012 Target
Bookings	9,576	8,996	9,543	10,230	10,620	10,620
Releases	9,576	8,996	9,543	10,230	10,620	10,620
Nurse Calls	14,094	12,894	9,898	9,689	12,352	12,352
Meals Served	470,850	433,620	423,765	420,090	460,000	460,000
Deputies	45	44	45	45	45	45
Sergeants	7	6	6	6	6	6
Average daily bookings	26.24	24.65	26.14	30.62	29	29