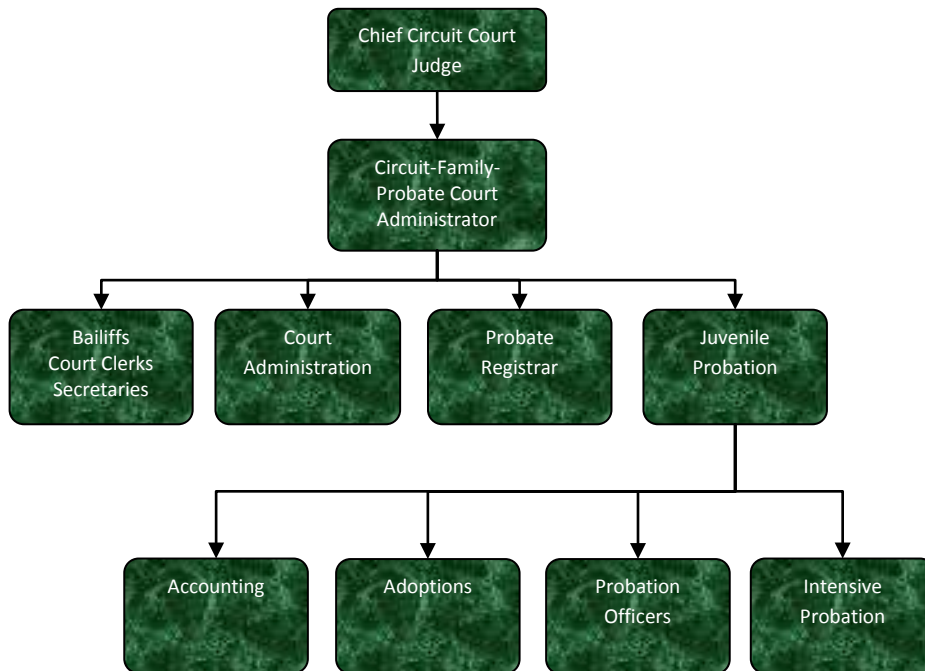


Circuit Court



Activities

Circuit-Family-Probate Court serves as trial court of general jurisdiction for Jackson County—felonies, major civil cases, domestic relations, appeals from lower jurisdiction/ agencies courts

Probate, Estate Division has exclusive legal and equitable jurisdiction in matters relating to settlement of estate of deceased persons, proceedings concerning trusts, guardianships, conservatorships, and proceedings to review and settle the account of a fiduciary

Family Court has jurisdiction in juvenile delinquency, neglect, abuse, adoption proceedings and juvenile traffic offenses

Circuit-Family Court is responsible for operation of other arms of the court: Friend of the Court, ADR, Jury Commission and the Law Library



Mission Statement

Jackson County Circuit-Family-Probate Court provides fair, accessible, effective, and responsive forums for the resolution of civil and criminal matters.

Strategic Plan Impact

✓ Safe Community

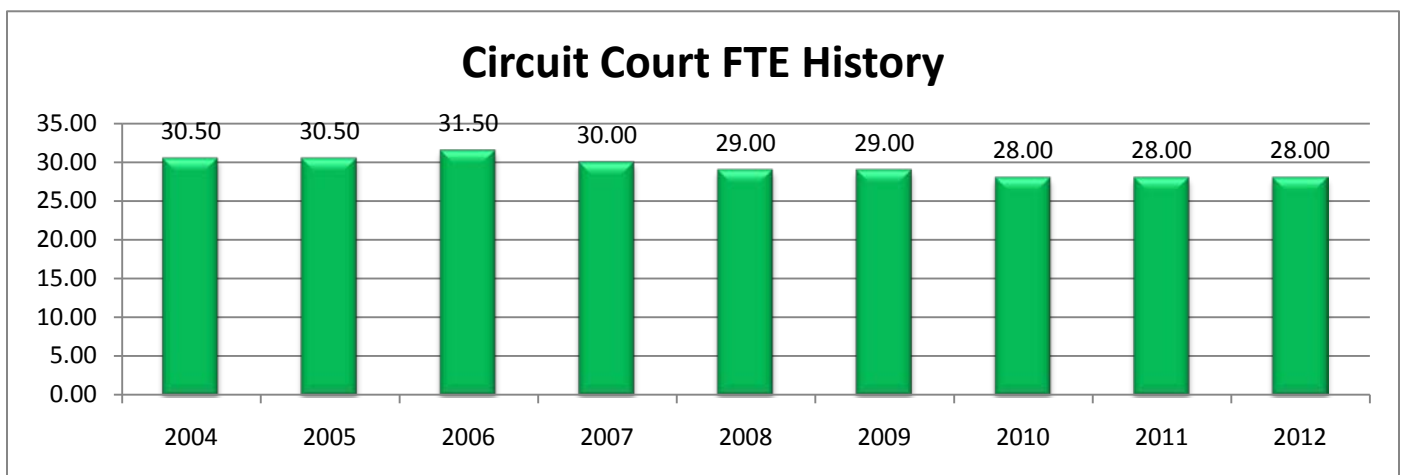
The Circuit Court is the trial court of general jurisdiction for Jackson County. It has jurisdiction over felonies, major civil cases, domestic relations, appeals from courts of lower jurisdiction and agencies. The Probate Court has exclusive legal jurisdiction in matters relating to settlement of estates related to deceased persons, proceedings concerning trusts, guardianships, conservatorships; and proceedings to review and settle the account of a fiduciary. The Family Court has jurisdiction in juvenile delinquency, neglect, abuse, adoptions, and juvenile traffic proceedings.

Accomplishments

- ✓ The Alternatives to Act 150 State Placement Committee has continued working closely with the Family Court Judiciary and DHS to find less expensive placements for our troubled juvenile populations, these efforts have resulted in reducing that part of the Child Care Fund Budget.
- ✓ The Adult Recovery Court was awarded additional grant funding through Mid-South Substance Abuse Commission that has allowed the Recovery Court to provide treatment to more participants, helping to reduce local and state jail bed usage and medical costs.

Budget Adjustments

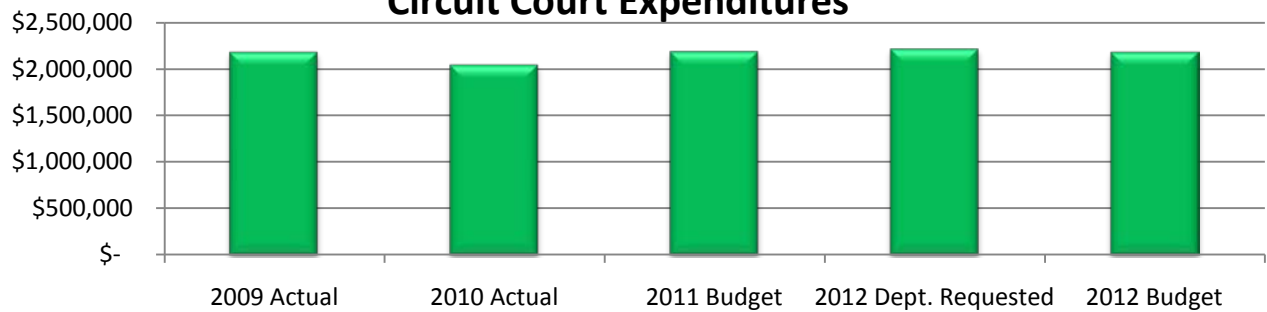
The circuit court requested an additional part-time secretary for a judge at a cost of \$27,215. Given the current five year plan for reductions, the Administrator did not recommend this position to be funded.



Expenditure History

	2009 <u>ACTUAL</u>	2010 <u>ACTUAL</u>	2011 <u>BUDGET</u>	2012 DEPT <u>REQUESTED</u>	2012 <u>BUDGET</u>
CONTRACT SERVICES	130,668	124,298	140,870	145,870	140,370
OTHER EXPENSES	42,758	40,750	64,130	64,130	53,230
PERSONNEL SERVICES	1,939,583	1,812,499	1,916,317	1,954,112	1,922,453
SUPPLIES & MATERIALS	65,165	62,799	65,550	66,550	63,800
TOTAL PROGRAM COST	\$2,178,174	\$2,040,346	\$2,186,867	\$2,230,662	\$2,179,853

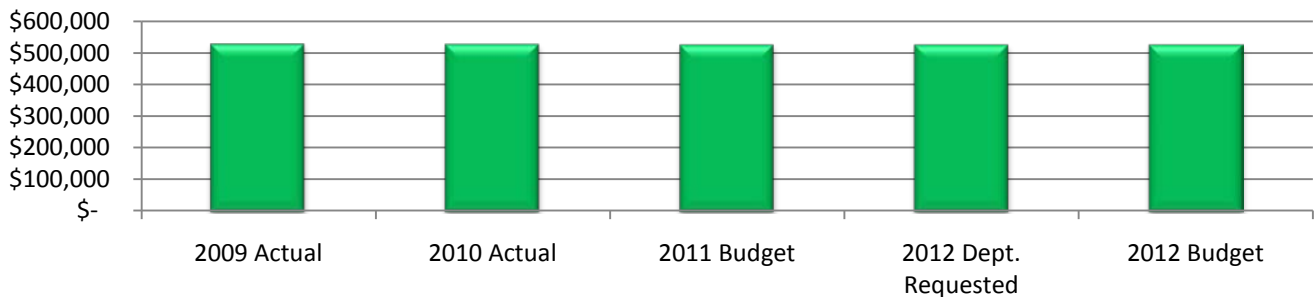
Circuit Court Expenditures



Revenue History

	2009 <u>ACTUAL</u>	2010 <u>ACTUAL</u>	2011 <u>BUDGET</u>	2012 DEPT <u>REQUESTED</u>	2012 <u>BUDGET</u>
CHARGES/FEES	98,323	86,680	102,439	102,439	102,439
INTERGOVERNMENTAL	410,676	411,751	402,204	402,204	402,204
OTHER	18,989	29,139	21,000	21,000	21,000
TOTAL PROGRAM COST	\$527,988	\$527,570	\$525,643	\$525,643	\$525,643

Circuit Court Revenues



Strategic Outcomes

<u>Indicator</u>	<u>2007 Actual</u>	<u>2008 Actual</u>	<u>2009 Actual</u>	<u>2010 Actual</u>	<u>2011 Target</u>	<u>2012 Target</u>
Percent of respondents who say they feel very or somewhat safe from violent crime	N/A	N/A	50%	ND	51%	N/D
Percent of respondents who say they feel very or somewhat safe in their neighborhood during the day.	N/A	N/A	92%	ND	93%	N/D
Percent of respondents who say they feel very or somewhat safe in their neighborhood after dark.	N/A	N/A	74%	ND	75%	N/D

Other Key Indicators

<u>Indicator</u>	<u>2007 Actual</u>	<u>2008 Actual</u>	<u>2009 Actual</u>	<u>2010 Actual</u>	<u>2011 Target</u>	<u>2012 Target</u>
Appeals, Admin. Reviews, Writs Filed	75	70	106	113	79	80
Criminal Case Filings	947	1,145	1,269	1265	1,120	1200
Civil Case Filings	495	456	511	561	480	500
Family Case Filings	4,498	4,204	4,289	4100	4,300	4200
Probate Case Filings	1,297	1,296	1,275	1275	1,300	1300
Total Full Time Employees	30	29	29	27	27	27
Total Part-Time Employees	2	2	2	4	4	4