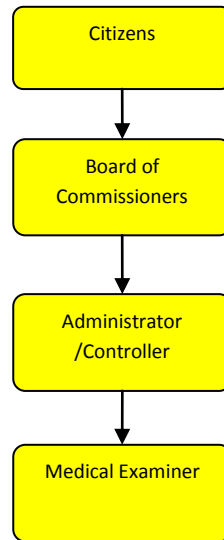


Medical Examiner



Programs

It is the duty of this office to investigate in certain instances the cause and manner of death within this county due to acts of violence, negligence or omission of a criminal nature and/or threats to protect public health.



Mission Statement

It is the mission of this office to complete an efficient, professional and dignified investigation of any death reported to this office which falls under the guidelines set forth by the State of Michigan and having occurred within the County of Jackson in order to determine cause and manner of death.

Activities

It is the duty of this office to investigate in certain instances the cause and manner of death within the county due to acts of violence, negligence or omission of a criminal nature and/or threats to protect public health.

The office consists of two employees: the Medical Examiner and an Assistant.

The services of pathology assistants, forensic pathologists, forensic dentists, body removal services, field investigators, morgue facilities, etc., are either contracted or are on a fee for service basis.

All service providers work on an on-call basis and respond when needed, coordinating their efforts to be most effective.

Strategic Plan Impact

✓ Safe Community

This is a State mandated office which has a direct impact on the safety of the community as we are responsible for investigating sudden & unexpected deaths. For example, the information gathered provides direct support for prosecution in criminal matters, or can be provided to families when the potential for a genetic problem is identified, therefore possibly saving lives in the future. Our office by and through our investigations prevents repeat injuries and works to identify any potential threat to the public health.

✓ Healthy Community

We help to provide critical and time sensitive information regarding the deaths in the community to protect the health and welfare of our citizens as well as establishing trends to be addressed to promote a healthier community.

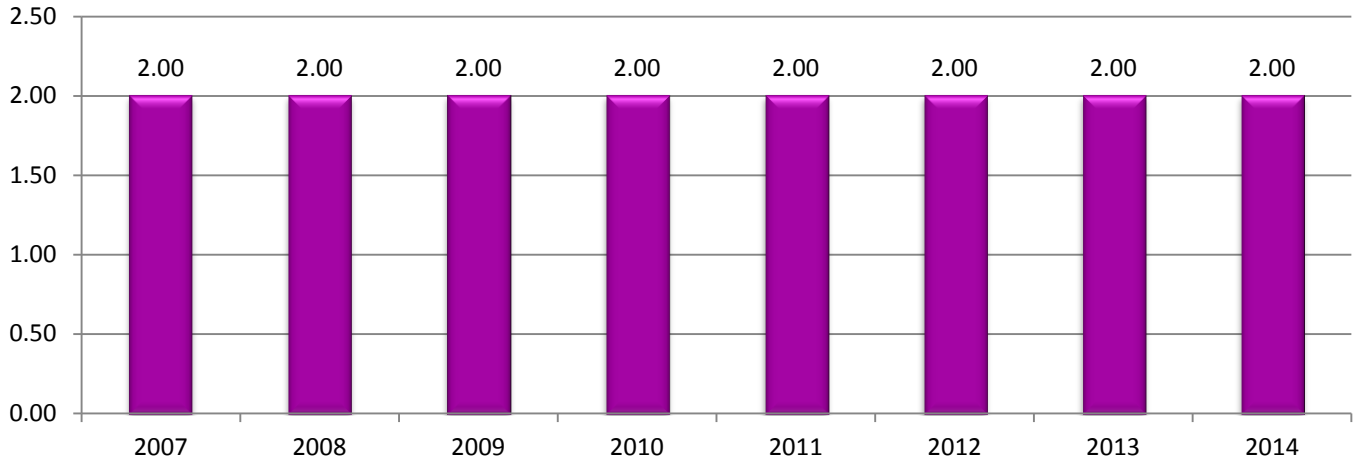
Accomplishments

- ✓ Integrated the new Electronic Death Registration System (EDRS) for the State of Michigan into our daily operations.
- ✓ Operating one of the first two pilot sites of the EDRS in the state providing continuous feedback to improve the system.

Budget Adjustments

There are no significant budget adjustments to this program.

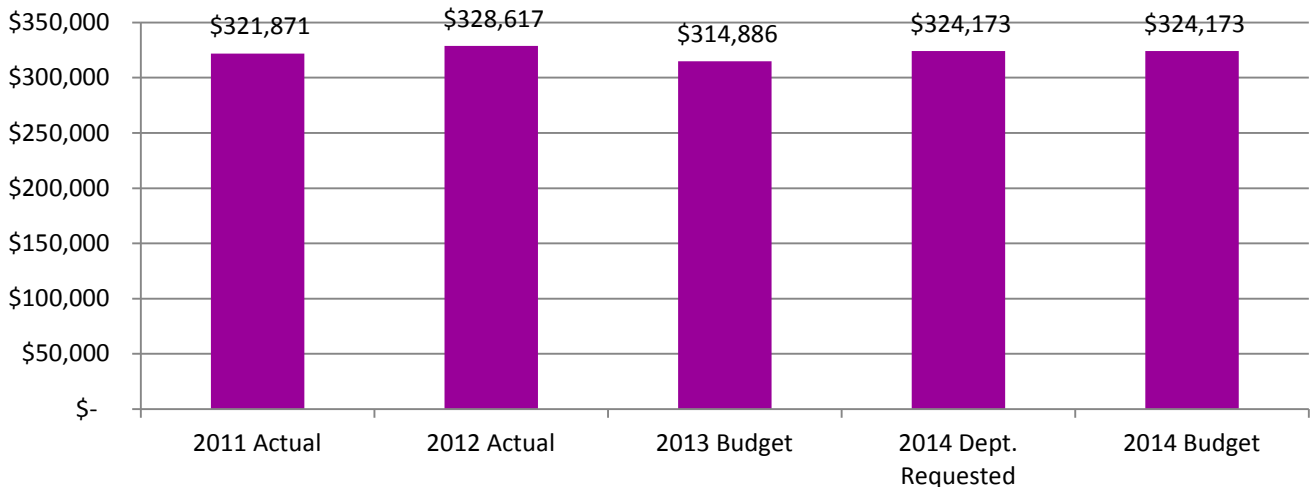
Medical Examiner FTE History



Expenditure History

	2011 ACTUAL	2012 ACTUAL	2013 BUDGET	2014 DEPT REQUESTED	2014 BUDGET
PERSONNEL SERVICES	85,290	88,134	90,459	99,746	99,746
SUPPLIES & MATERIALS	11,843	3,287	5,700	5,700	5,700
CONTRACT SERVICES	217,342	227,699	208,950	208,950	208,950
OTHER EXPENSES	7,396	9,497	9,777	9,777	9,777
TOTAL PROGRAM COST	\$321,871	\$328,617	\$314,886	\$324,173	\$324,173

MEDICAL EXAMINERS EXPENDITURES

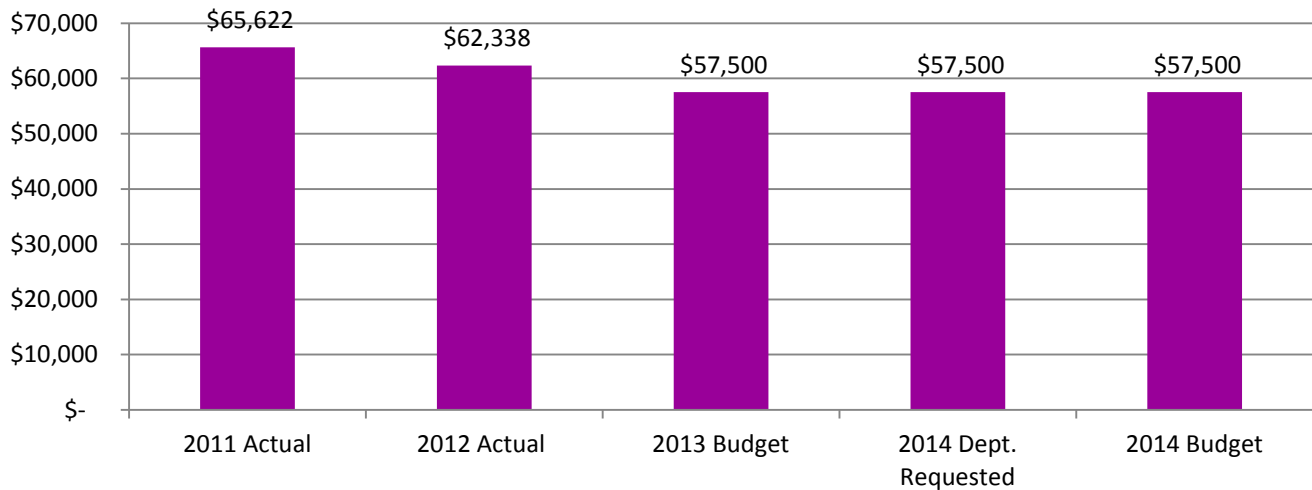


Medical Examiner

Revenue History

	2011 <u>ACTUAL</u>	2012 <u>ACTUAL</u>	2013 <u>BUDGET</u>	2014 DEPT <u>REQUESTED</u>	2014 <u>BUDGET</u>
CHARGES/FEES	65,622	62,338	57,500	57,500	57,500
TOTAL PROGRAM COST	\$65,622	\$62,338	\$57,500	\$57,500	\$57,500

MEDICAL EXAMINERS REVENUES



Strategic Outcomes

Indicator	2009 <u>Actual</u>	2010 <u>Actual</u>	2011 <u>Actual</u>	2012 <u>Actual</u>	2013 <u>Target</u>	2014 <u>Target</u>
Percent of respondents who say they feel very or somewhat safe from violent crime	50%	N/D	84%	N/D		

Other Key Indicators

Indicator	2009 Actual	2010 Actual	2011 Actual	2012 Actual	2013 Target	2014 Target
Cases Reviewed	326	261	319	329	N/A	N/A
Autopsies Performed	159	121	147	140	N/A	N/A
Cremation Fees Collected	\$35,900	\$37,665	\$44,200	\$43,350	\$37,000	\$37,000
Prison Reimbursement Dollars	\$16,416	\$12,846	\$15,710	\$15,893	\$17,000	\$17,000
Report Fees / SUID Reimbursement Dollars	\$6,600	\$2,822	\$5,710	\$3,095	\$3,500	\$3,500
ME	1	1	1	1	1	1
Forensic Pathologists	3	3	3	3	3	3
Diener (pathology assistants)	3	3	3	3	3	3
Field Investigators	8	8	8	8	8	8
Administrative Assistant	1	1	1	1	1	1
Average Cost Per Case for Forensic Pathologist	\$800	\$800	\$800	\$800	\$800	\$800
Average Cost Per Case for Diener	\$95	\$95	\$95	\$95	\$95	\$95
Average Cost Per Toxicology	\$180	\$180	\$180	\$180	\$180	TBD
Average Morgue Cost Per Autopsy	\$50	\$50	\$50	\$50	\$50	\$50
Average Cost For Field Investigator Per Day	\$100	\$100	\$100	\$100	\$100	\$100
Average Time Autopsy Completed After Body Delivery to Morgue	24 Hours	24 Hours	24 Hours	24 Hours	24 Hours	24 Hours
Average Time Until Completion of Final Autopsy Report	1-2 Months	1-2 Months	1-2 Months	1-2 Months	1-2 Months	1-2 Months