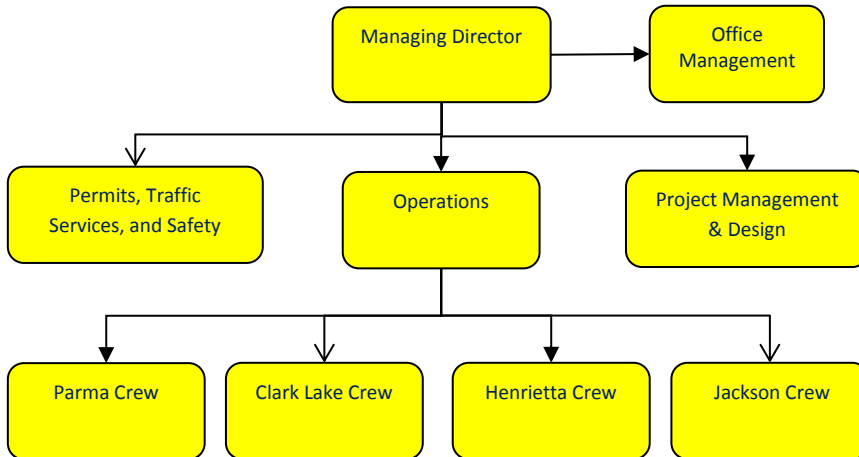


# Department of Transportation



## Programs

[Primary Roads](#)

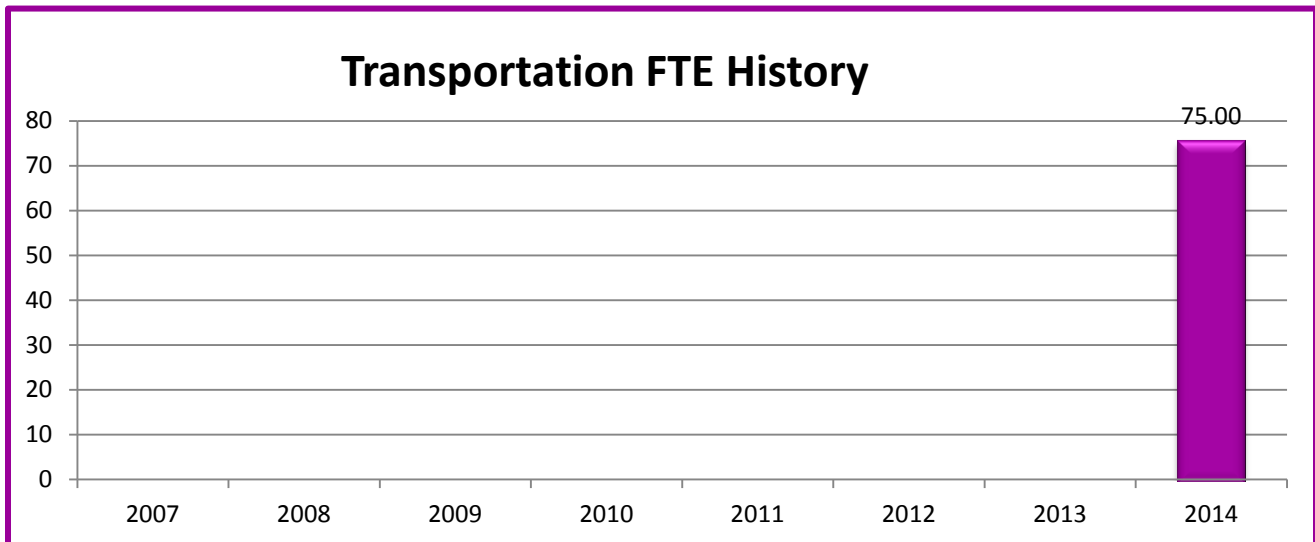
[Local Roads](#)

[County Roads](#)



## Mission Statement

“The Jackson County Department of Transportation is dedicated to providing a safe, efficient, and cost effective road system to the motoring public in Jackson County”.



## Primary Road Funds

### Activities

The County has over 544 miles of primary roads, which are larger than local roads both in distance and in volume. The 2013 budget includes marking of 410 miles of primary roads, over banding of 26 miles of road, patching potholes, and daily routine maintenance.

### Strategic Plan Impact

- ✓ Safe Community  
Safe Roads are important to having a safe community, particularly in a location like Jackson, Michigan that experiences four seasons and feels the impact of harsh seasons on the road infrastructure.
- ✓ Economic Development  
Sustainable infrastructure is essential to support economic development retention and attraction.

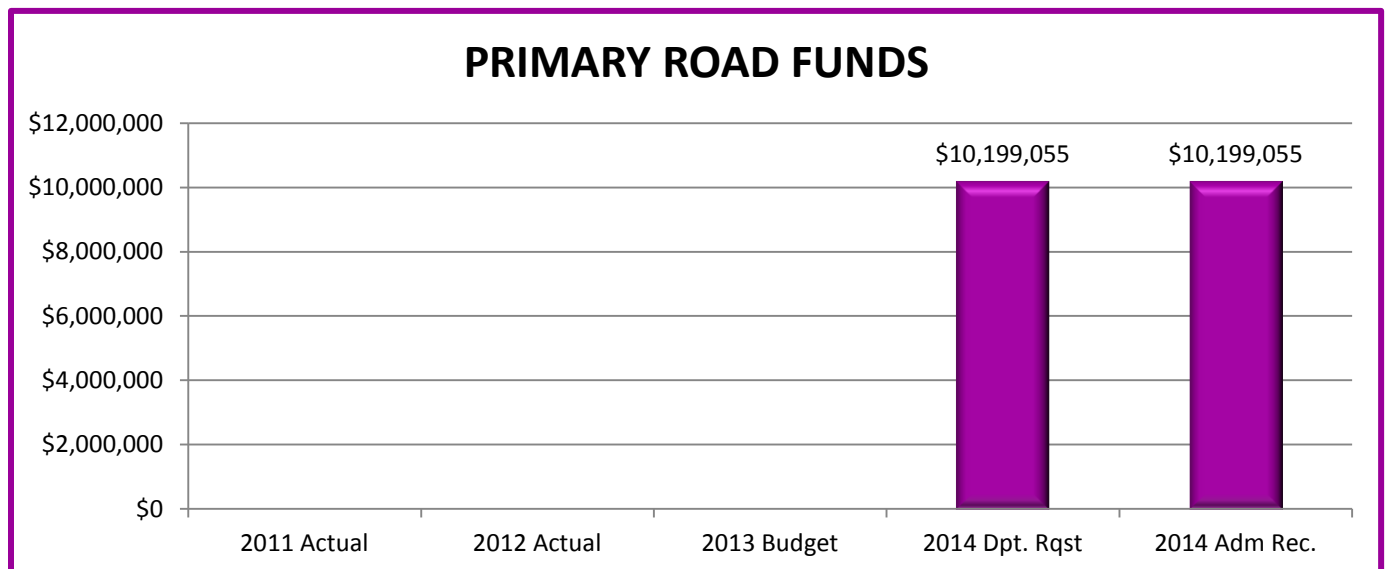
### Accomplishments

- ✓ Made transition from the Jackson County Road Commission to the Jackson County Department of Transportation
- ✓ Applied for and received additional funding from the state to reconstruct Horton, Weatherwax Roads, and Fifth Street. Also 5.50 miles of Preventative Maintenance on Jefferson Road.

## Budget Adjustments

The Primary Road Funds program is new to the Jackson County budget in 2014 following the Board of Commissioners decisions to assume the powers and duties of the Jackson County Road Commission in 2013.

Expenditure History					
	2011 <u>ACTUAL</u>	2012 <u>ACTUAL</u>	2013 <u>BUDGET</u>	2014 DEPT <u>REQUESTED</u>	2014 <u>BUDGET</u>
PRESERVATION - STRUCTURAL IMP				4,650,205	4,650,205
MAINTENANCE				5,058,789	5,058,789
TRUNK LINE MAINTENANCE CONTRACT					
TRUNK LINE NON-MAINTENANCE					
EQUIPMENT - NET				135,160	135,160
ADMINISTRATIVE - NET				354,901	354,901
CAPTIAL OUTLAY - NET					
<b>TOTAL PROGRAM COST</b>	\$0	\$0	\$0	\$10,199,055	\$10,199,055

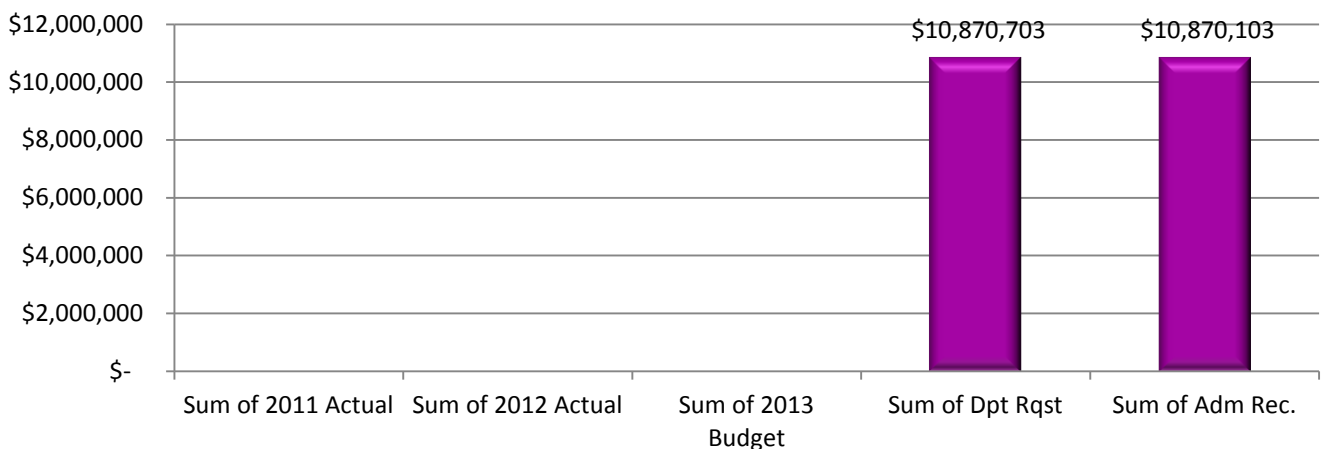


# Department of Transportation

## Revenue History

	2011 <u>ACTUAL</u>	2012 <u>ACTUAL</u>	2013 <u>BUDGET</u>	2014 DEPT <u>REQUESTED</u>	2014 <u>BUDGET</u>
PERMITS					
FEDERAL				3,459,766	3,459,766
STATE				7,171,109	7,171,109
LOCAL					
CHARGES FOR SERVICES					
INTEREST AND RENTALS				61,585	61,585
OTHER				178,243	178,243
<b>TOTAL PROGRAM COST</b>	\$0	\$0	\$0	\$10,870,703	\$10,870,703

## PRIMARY ROAD FUNDS



## Strategic Outcomes

Indicator	2009 <u>Actual</u>	2010 <u>Actual</u>	2011 <u>Actual</u>	2012 <u>Actual</u>	2013 <u>Target</u>	2014 <u>Target</u>
Percent of respondents who said their ease of car travel in Jackson County was excellent or good.	59%	ND	59%	ND	60%	ND
Percent of respondents who said road repair was excellent or good.	12%	ND	11%	ND	12%	ND
Percent of respondents who said snow removal on County roads and highways was excellent or good.	38%	ND	36%	ND	38%	ND

Other Key Indicators

<u>Indicator</u>	2009 <u>Actual</u>	2010 <u>Actual</u>	2011 <u>Actual</u>	2012 <u>Actual</u>	2013 <u>Target</u>	2014 <u>Target</u>

# Local Road Funds

## Activities

Local roads are more residential in nature or are in less populated parts of the County. Generally speaking they are not long through routes. The County maintains approximately 1,039 miles of local roads throughout Jackson County. The local road funds include budget to mark 60 miles of pavement, perform dust control on 217.94 miles of gravel roads, patch potholes, and perform daily routine maintenance.

## Strategic Plan Impact

- ✓ Safe Community

## Accomplishments

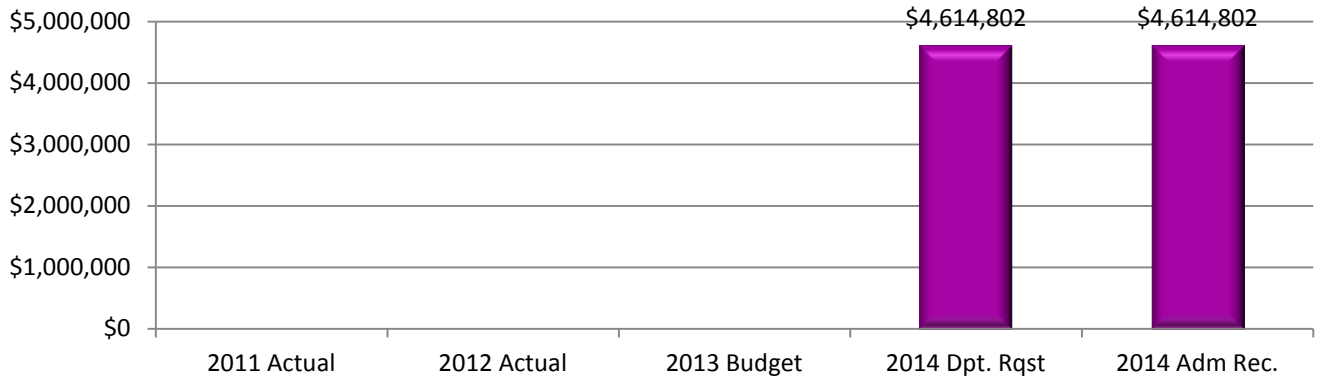
- ✓ Applied for and received additional funding to replace Warner and Cross Road Bridges.
- ✓ Maintained paved roads without having to turn them back to gravels.

## Budget Adjustments

The Local Road Funds program is new to the Jackson County budget in 2014 following the Board of Commissioners decisions to assume the powers and duties of the Jackson County Road Commission in 2013.

Expenditure History					
	2011 <u>ACTUAL</u>	2012 <u>ACTUAL</u>	2013 <u>BUDGET</u>	2014 DEPT <u>REQUESTED</u>	2014 <u>BUDGET</u>
PRESERVATION - STRUCTURAL IMP				0	0
MAINTENANCE				4,271,208	4,271,208
TRUNK LINE MAINTENANCE CONTRACT					
TRUNK LINE NON-MAINTENANCE					
EQUIPMENT - NET				135,160	135,160
ADMINISTRATIVE - NET				208,434	208,434
CAPTIAL OUTLAY - NET					
<b>TOTAL PROGRAM COST</b>	\$0	\$0	\$0	\$4,614,802	\$4,614,802

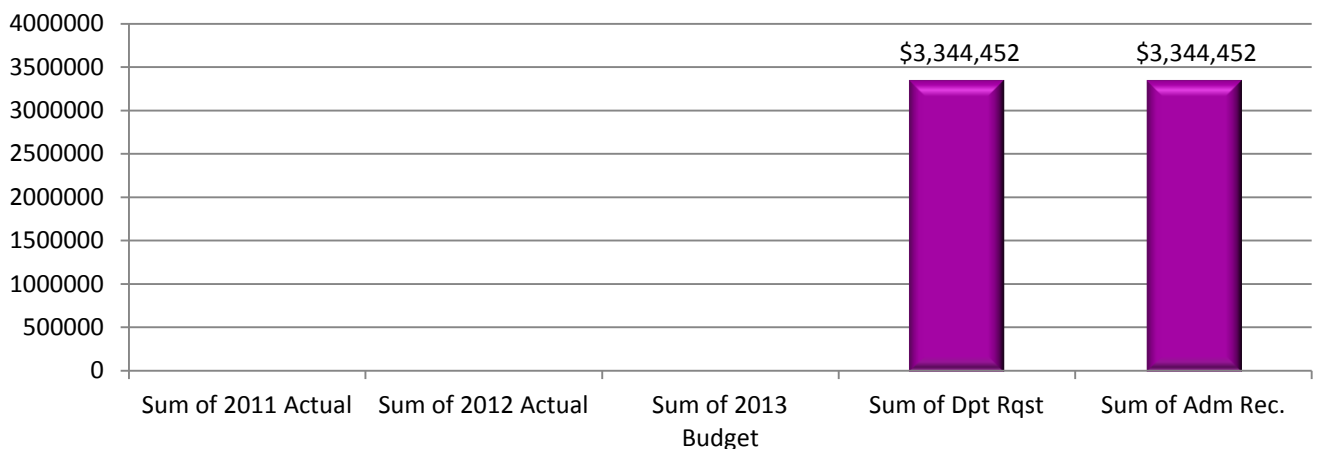
**LOCAL ROAD FUNDS**



**Revenue History**

	2011 <u>ACTUAL</u>	2012 <u>ACTUAL</u>	2013 <u>BUDGET</u>	2014 DEPT <u>REQUESTED</u>	2014 <u>BUDGET</u>
PERMITS					
FEDERAL					
STATE				3,316,239	3,316,239
LOCAL				28,213	28,213
CHARGES FOR SERVICES					
INTEREST AND RENTALS					
OTHER					
<b>TOTAL PROGRAM COST</b>	\$0	\$0	\$0	\$3,344,452	\$3,344,452

**LOCAL ROAD FUNDS**







Strategic Outcomes

<u>Indicator</u>	<u>2009 Actual</u>	<u>2010 Actual</u>	<u>2011 Actual</u>	<u>2012 Actual</u>	<u>2013 Target</u>	<u>2014 Target</u>

Other Key Indicators

<u>Indicator</u>	<u>2009 Actual</u>	<u>2010 Actual</u>	<u>2011 Actual</u>	<u>2012 Actual</u>	<u>2013 Target</u>	<u>2014 Target</u>

# County Road Funds

## Activities

County roads, also known as all-season-roads, are built for heavy traffic. They have been built with additional strength and durability to withstand truck traffic loads all year long. County Roads include 280.5 miles of state trunk line, which the County is under contract with the State of Michigan to maintain.

## Strategic Plan Impact

- ✓ Safe Community

## Accomplishments

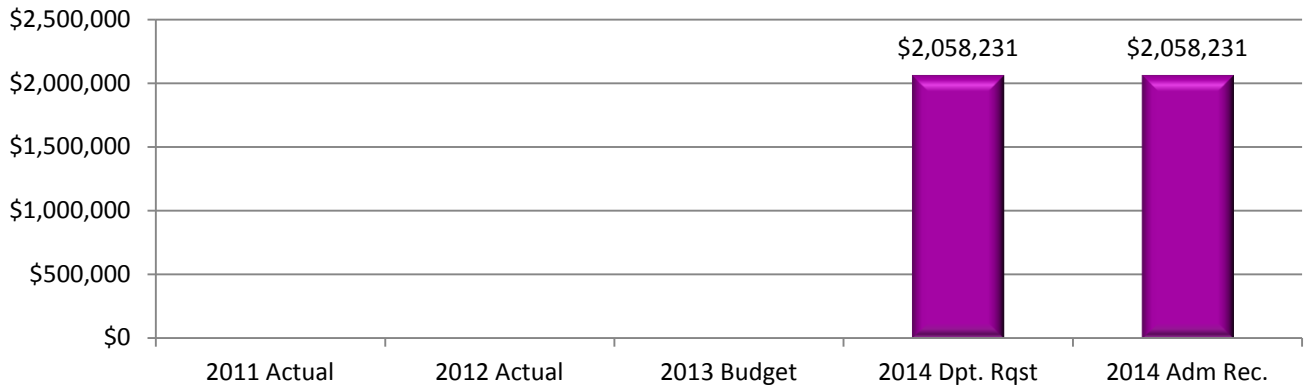
We have been able to maintain our fund balance with the decreasing amount of Michigan Transportation Funds that we are receiving.

## Budget Adjustments

The County Road Funds program is new to the Jackson County budget in 2014 following the Board of Commissioners decisions to assume the powers and duties of the Jackson County Road Commission in 2013.

Expenditure History					
	2011 ACTUAL	2012 ACTUAL	2013 BUDGET	2014 DEPT REQUESTED	2014 BUDGET
PRESERVATION - STRUCTURAL IMP					
MAINTENANCE					
TRUNK LINE MAINTENANCE CONTRACT				1,993,612	1,993,612
TRUNK LINE NON-MAINTENANCE				12,595	12,595
EQUIPMENT - NET				67,580	67,580
ADMINISTRATIVE - NET					
CAPTIAL OUTLAY - NET				-15,556	-15,556
<b>TOTAL PROGRAM COST</b>	\$0	\$0	\$0	\$2,058,231	\$2,058,231

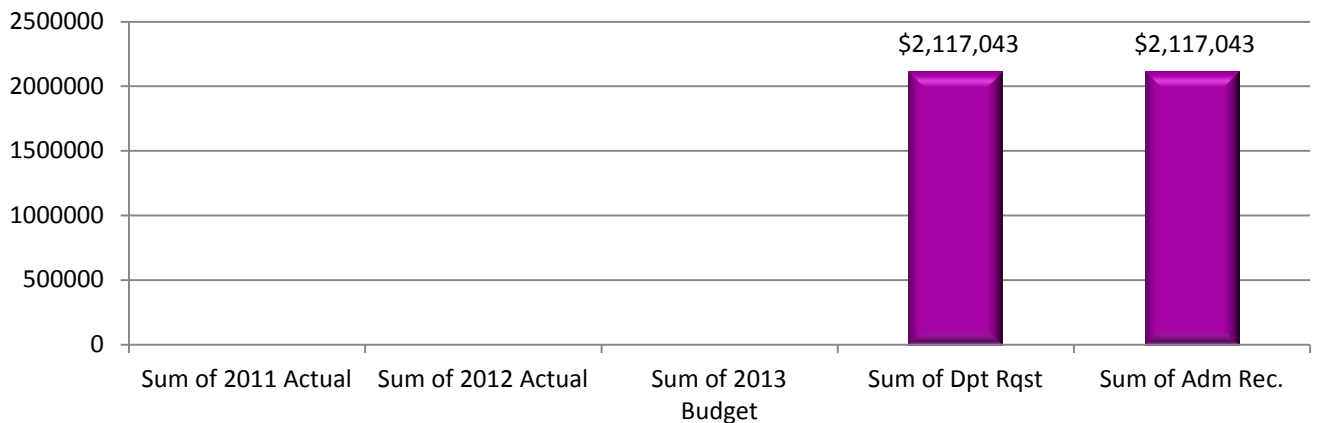
### COUNTY ROAD FUNDS



#### Revenue History

	2011 <u>ACTUAL</u>	2012 <u>ACTUAL</u>	2013 <u>BUDGET</u>	2014 DEPT <u>REQUESTED</u>	2014 <u>BUDGET</u>
PERMITS				65,779	65,779
FEDERAL					
STATE					
LOCAL					
CHARGES FOR SERVICES				2,051,264	2,051,264
INTEREST AND RENTALS					
OTHER					
<b>TOTAL PROGRAM COST</b>	\$0	\$0	\$0	\$2,117,043	\$2,117,043

### COUNTY ROAD FUNDS



Strategic Outcomes

<u>Indicator</u>	<u>2009 Actual</u>	<u>2010 Actual</u>	<u>2011 Actual</u>	<u>2012 Actual</u>	<u>2013 Target</u>	<u>2014 Target</u>

Other Key Indicators

<u>Indicator</u>	<u>2009 Actual</u>	<u>2010 Actual</u>	<u>2011 Actual</u>	<u>2012 Actual</u>	<u>2013 Target</u>	<u>2014 Target</u>