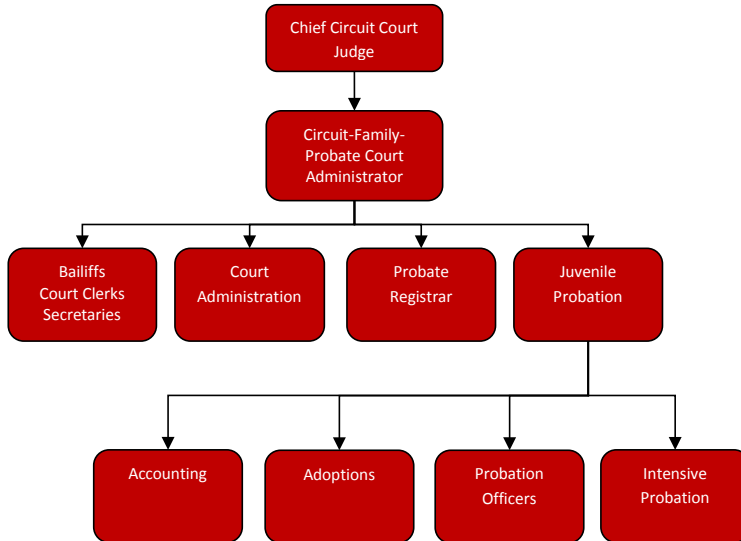


Circuit Court



Mission Statement

Jackson County Circuit-Family-Probate Court provides fair, accessible, effective, and responsive forums for the resolution of civil and criminal matters.

Programs

[Circuit, Family, and Probate Court](#)

[Circuit Court Probation](#)

Circuit Court

Activities

Circuit-Family-Probate Court serves as trial court of general jurisdiction for Jackson County—felonies, major civil cases, domestic relations, appeals from lower jurisdiction/ agencies courts.

Probate, Estate Division has exclusive legal and equitable jurisdiction in matters relating to settlement of estate of deceased persons, proceedings concerning trusts, guardianships, conservatorships, and proceedings to review and settle the account of a fiduciary.

Family Court has jurisdiction in juvenile delinquency, neglect, abuse, adoption proceedings and juvenile traffic offenses.

Circuit-Family Court is responsible for operation of other arms of the court: Friend of the Court, ADR, Jury Commission and the Law Library.

Strategic Plan Impact

✓ Safe Community

The Circuit Court is the trial court of general jurisdiction for Jackson County. It has jurisdiction over felonies, major civil cases, domestic relations, appeals from courts of lower jurisdiction and agencies. The Probate Court has exclusive legal jurisdiction in matters relating to settlement of estates related to deceased persons, proceedings concerning trusts, guardianships, conservatorships; and proceedings to review and settle the account of a fiduciary. The Family Court has jurisdiction in juvenile delinquency, neglect, abuse, adoptions, and juvenile traffic proceedings.

Accomplishments

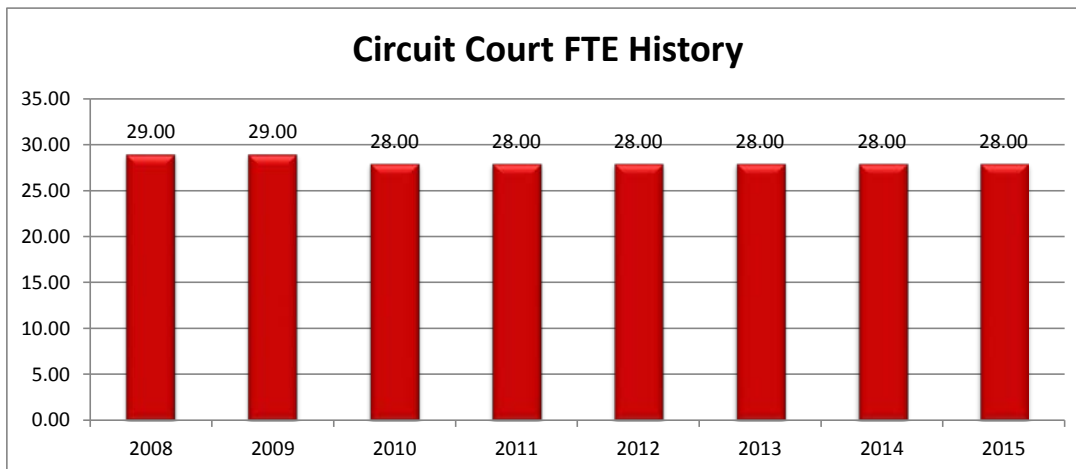
- ✓ The Alternatives to Act 150 State Placement Committee has continued their on-going efforts working closely with the Circuit-Family-Probate Court Judiciary and DHS to find less expensive placement options for our troubled juvenile populations. These efforts have resulted in reducing that part of the Child Care Fund Budget by more than \$1,000,000 annually. These efforts have become much more challenging with the increased number of juveniles committing serious crimes and having and finding community based alternatives when possible.
- ✓ The Adult Recovery Court Team is continuing their efforts on finding additional funding sources to help to continue, improve, and enhance our current services. They have applied for several additional grants just in the past couple of months. A non-profit 5013C

organization, named; Friends of Recovery, has been established to help coordinate local funding efforts. These local efforts along with additional grant funding has allowed the Recovery Court to provide treatment to more participants, helping to reduce local and state jail bed usage and medical costs. They just had 16 Recovery Court Participants graduate, which is their largest number ever at one time.

- ✓ Beginning July 1st, we are starting a new Specialty Business Court Docket. The Business Court will have jurisdiction over business and commercial dispute cases which exceed \$25,000.

Budget Adjustments

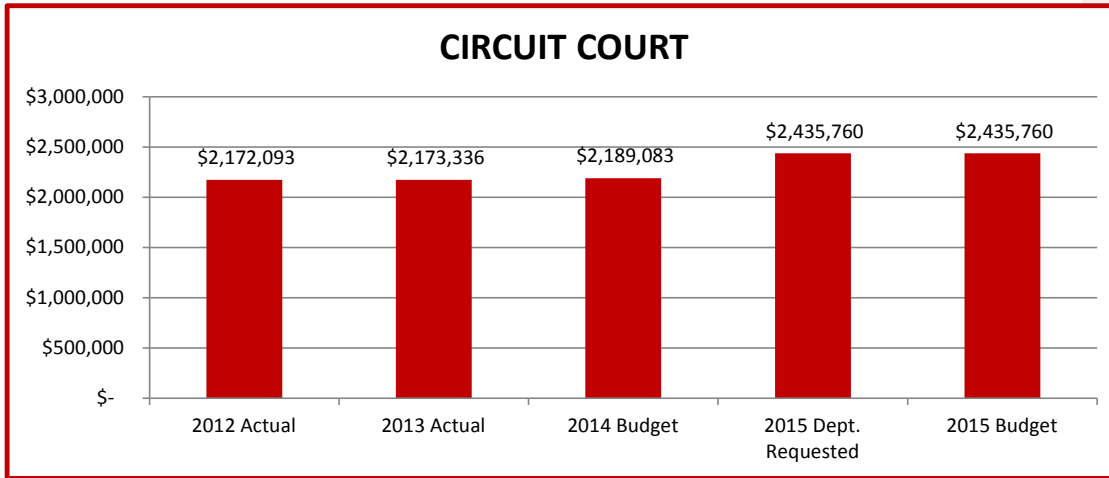
The Circuit Court budget includes a 5% reduction through the use of furlough days for all Circuit Court Employees.



Circuit Court

Expenditure History

	2012 <u>ACTUAL</u>	2013 <u>ACTUAL</u>	2014 <u>BUDGET</u>	2015 DEPT <u>REQUESTED</u>	2015 <u>BUDGET</u>
CONTRACT SERVICES	\$114,603	\$121,559	\$123,170	\$123,170	\$123,170
OTHER EXPENSES	\$35,393	\$43,938	\$54,930	\$56,930	\$56,930
PERSONNEL SERVICES	\$1,956,311	\$1,942,328	\$1,945,433	\$2,190,110	\$2,190,110
SUPPLIES & MATERIALS	\$65,786	\$65,511	\$65,550	\$65,550	\$65,550
TOTAL PROGRAM COST	\$2,172,093	\$2,173,336	\$2,189,083	\$2,435,760	\$2,435,760



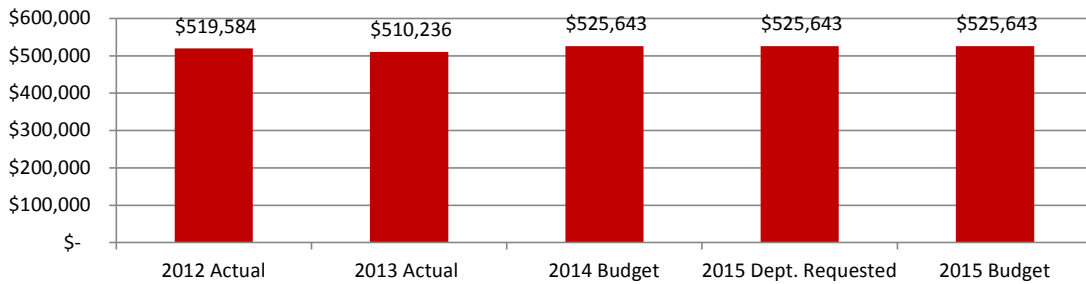
Formatted: Space Before: 12 pt, After: 10 pt

Circuit Court

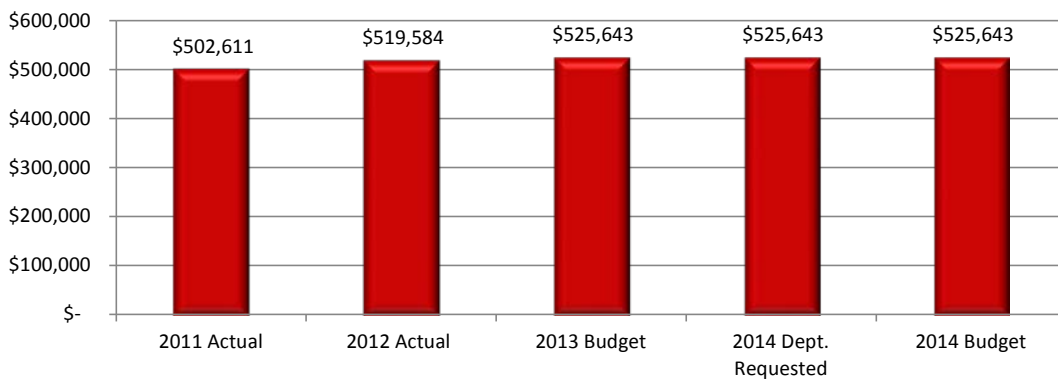
Revenue History

	2012 ACTUAL	2013 ACTUAL	2014 BUDGET	2015 DEPT REQUESTED	2015 BUDGET
CHARGES/FEES	\$85,284	\$81,447	\$102,439	\$102,439	\$102,439
INTERGOVERNMENTAL	\$411,001	\$410,741	\$402,204	\$402,204	\$402,204
OTHER	\$23,299	\$18,048	\$21,000	\$21,000	\$21,000
TOTAL PROGRAM REVENUE	\$519,584	\$510,236	\$525,643	\$525,643	\$525,643

CIRCUIT COURT



CIRCUIT COURT



Strategic Outcomes

Circuit Court Probation

<u>Indicator</u>	<u>2010 Actual</u>	<u>2011 Actual</u>	<u>2012 Actual</u>	<u>2013 Actual</u>	<u>2014 Target</u>	<u>2015 Target</u>
Percent of respondents who say they feel very or somewhat safe from violent crime	ND	No Submission	N/D	49%		
Percent of respondents who say they feel very or somewhat safe in their neighborhood during the day.	ND	No Submission	N/D	92%		
Percent of respondents who say they feel very or somewhat safe in their neighborhood after dark.	ND	No Submission	N/D			

Other Key Indicators

<u>Indicator</u>	<u>2010 Actual</u>	<u>2011 Actual</u>	<u>2012 Actual</u>	<u>2013 Actual</u>	<u>2014 Target</u>	<u>2015 Target</u>
Appeals, Admin. Reviews, Writs Filed	113	89	80		80	
Criminal Case Filings	1265	758	1,200		880	
Civil Case Filings	561	383	500		400	
Family Case Filings	4,100	3,844	4,200		4,200	
Probate Case Filings	1,275	1,406	1,300		1,500	
Total Full Time Employees	27	27	27		27	
Total Part-Time Employees	4	4	4		4	



This page intentionally left blank.

Circuit Court Probation

Activities

The Circuit Court supervises offenders using the most appropriate least restrictive and cost effective means. The Court imposes sanctions including removal from the community when appropriate to deter criminal behavior; provides investigative support and information to the Courts, Parole Board, and the Department of Corrections including accurate and timely sentencing recommendations for the courts; and develops and maintains credible and cost effective community sanctions.

Strategic Plan Impact

- ✓ Safe Community

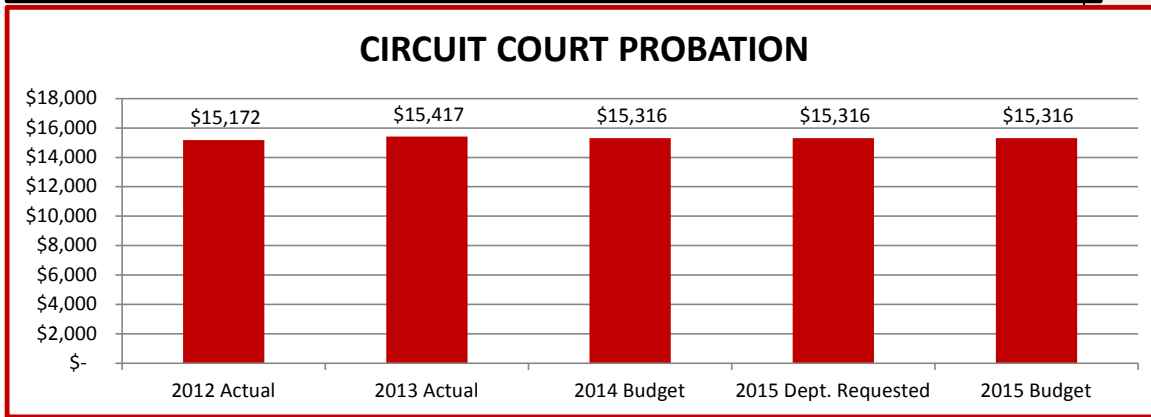
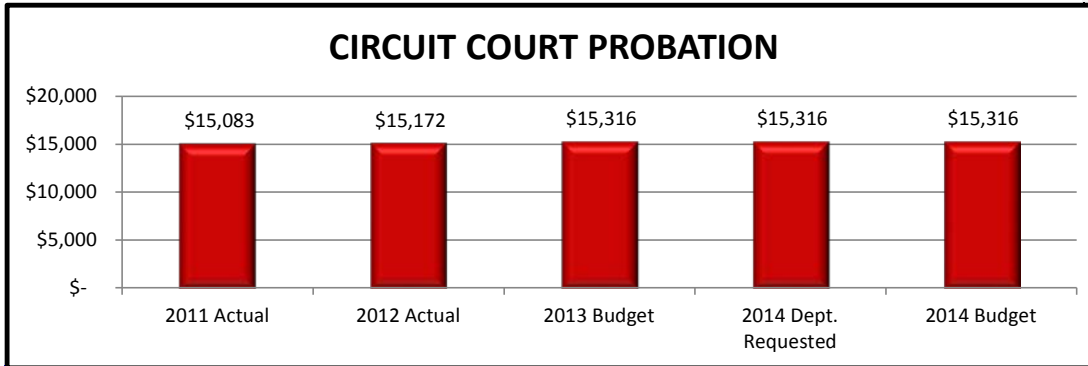
Accomplishments

Budget Adjustments

No significant budget adjustments

Expenditure History					
	2012 <u>ACTUAL</u>	2013 <u>ACTUAL</u>	2014 <u>BUDGET</u>	2015 DEPT <u>REQUESTED</u>	2015 <u>BUDGET</u>
SUPPLIES & MATERIALS	\$9,623		\$9,971		
OTHER EXPENSES	\$5,549		\$5,345		
TOTAL PROGRAM COST	\$15,172		\$15,316		

Circuit Court Probation



Revenue History					
	2012 <u>ACTUAL</u>	2013 <u>ACTUAL</u>	2014 <u>BUDGET</u>	2015 DEPT <u>REQUESTED</u>	2015 <u>BUDGET</u>
TOTAL PROGRAM COST	\$0	\$0	\$0	\$0	\$0

See Circuit Court for Performance Data